



## 2025-2026 School Year



Official PBIS Silver School & 2024 Kindness Certified School  
2021-2024 Top Work Places – 4 years in a row

### Social Media

Facebook:

St. Philip Neri Catholic School

Instagram: [Spnjesters](#)

Tik Tok:

[stphilipnerimdjesters](#)

### MAY 2026

#### INFORMATIONAL FLYERS INCLUDED IN THIS NEWSLETTER:

**SCHOOL EVENTS** – May Calendar, May Lunch Menu, HSA Tuition Raffle Flyer, HSA SPIRIT NIGHTS, SPN Talent Show (5/14), Muffins with Mom (5/6), SPN Golf Tournament (5/19), and SPN Alumni Gathering (5/31)

**PARISH EVENTS** –Golden Boot Soccer Camp, Yard Sale and Car Wash (5/9), Parish Picnic (5/31), and Parish Summer Camp

#### Looking Ahead

- May 1 Out of Uniform - Home and School Association (Day 3 of 3)
- May 1 SPN Jesters Running Club from 3-4:15 PM
- May 3 SPN Youth Mass at 5 PM followed by Life Teen/Edge Youth Ministry
- May 6 Muffins with Mom sponsored by the HSA from 7:30-8:30 AM
- May 6 Flower Mart Trip - All Grades to Vince's Nursery
- May 7 School Mass for all Grades at 9 AM
- May 7 Spirit Night at Italia's Corner Cafe from 4:00-8:30 PM
- May 8 NO SCHOOL - Faculty Retreat
- May 9 SPN Outreach and Youth Ministries - Yard Sale and Car Wash
- May 10 Happy Mother's Day
- May 12 Used Uniform Exchange from 3-5 PM
- May 13 Talent Show Dress Rehearsal
- May 14 Wear your Spirit Wear T-Shirt with SPN Gym Shorts
- May 14 School Mass for all Grades at 9 AM
- May 14 Talent Show at 6 PM
- May 15 SPN Jesters Running Club from 3-4:15 PM
- May 19 SPN 9<sup>th</sup> Annual Golf Tournament at Compass Pointe
- May 20 HSA General Membership Meeting at 5 PM
- May 20 Band and Chorus Concert at 5 PM
- May 21 School Mass at 8:15 AM
- May 21 Field Day - Wear your House Color with SPN Gym Shorts



May 21 Early Dismissal at 12:00 PM  
 May 22 NO SCHOOL - Happy Memorial Day Weekend  
 May 24 Praise & Worship and Life Teen/Edge at 5 PM  
 May 25 NO SCHOOL - Happy Memorial Day  
 May 26 8<sup>th</sup> Grade vs. Faculty Softball Game  
 May 28 School Mass for all Grades at 9 AM  
 May 28 Early Dismissal at 12:00 PM  
 May 28 8th Grade Luncheon at 12:30 PM  
 May 29 Early Dismissal at 12:00 PM  
 May 29 Class of 2026 Graduation at 2 PM  
 May 29 Spirit Night at Panda Express  
 May 31 SPN Parish Picnic from 12:30-4:00 PM  
 May 31 SPN Alumni Gathering from 1-4 PM

#### FIELD TRIPS

May 12 - 6<sup>th</sup> & 7<sup>th</sup> Grade Field Trip  
 May 20 - Pre-K and K Field Trip  
 May 26 - 4<sup>th</sup> Grade Field Trip  
 May 27 - 5<sup>th</sup> Grade Field Trip  
 May 27 - 8<sup>th</sup> Grade Field Trip  
 June 1 - 1<sup>st</sup>, 2<sup>nd</sup> & 3<sup>rd</sup> Field Trip

#### CLASS PICNIC DATES

June 1 - Pre-K Picnic  
 June 2 - Kindergarten Picnic  
 June 4 - Grades 4 & 5 Picnic  
 June 5 - Grades 6 & 7 Picnic  
 June 8 - Grades 1-3 Picnic

St. Philip Neri School 410-859-1212 [office@spnmd.org](mailto:office@spnmd.org) [spnmd.org](http://spnmd.org)

#### Mission Statement:

*St. Philip Neri School is dedicated to fostering Catholic faith and academic excellence. Under the guidance of the Holy Spirit, students are provided the opportunity to develop their gifts and talents while striving to become active members of their church. A foundation for future success and life-long learning is provided in partnership with the family, parish and school community.*

## HOME AND SCHOOL ASSOCIATION NEWS

### SPIRIT NIGHTS IN MAY

**MAY 7** - Spirit Night at Italia's Corner from 4:00-8:30 PM

**MAY 29** - Spirit Night at Panda Express from 9:30 AM to 11:30 PM

### MAY 1 - HSA OUT-OF-UNIFORM DAY (Day 3 of 3)

The HSA is sponsoring three out-of-uniform days with proceeds going towards HSA-sponsored events. The cost is \$10 for all three days paid in advance or \$5 each day of. Dates are: March 27 (past), April 17 (past), and May 1.

ONLINE PAYMENT LINK:

<https://forms.diamondmindinc.com/stphilipneri/hsaout-of-uniform/>

### GET YOUR HSA TUITION RAFFLE TICKETS TODAY!

Win a year of FREE tuition for the 2026-2027 school year OR \$2500 in cash!

Ticket Price is 1 for \$25, 3 for \$60, or 5 for \$100.

Drawing date will be June 2026.

Flyer is on the last page of this newsletter. To purchase tickets online, please visit:

<https://forms.diamondmindinc.com/stphilipneri/hsatuition>

For general information on HSA-Sponsored events, activities, and committees visit:

<https://spnmd.org/home-school-association/>

For questions about any HSA activity, please send an email to [SPNHSAMD@gmail.com](mailto:SPNHSAMD@gmail.com).

# MAY IS MENTAL HEALTH AWARENESS MONTH

## MAY 1

### HSA OUT-OF-UNIFORM DAY (Day 3 of 3)

The HSA is sponsoring three spring out-of-uniform Days with proceeds going towards HSA-sponsored events. The cost is \$10 for all three days paid in advance or \$5 each day of.

Dates are: March 27 (past), April 17 (past), and May 1

ONLINE PAYMENT LINK:

<https://forms.diamondmindinc.com/stphilipneri/hsaout-of-uniform!>



### GIRLS RUNNING CLUB from 3-4:15 PM

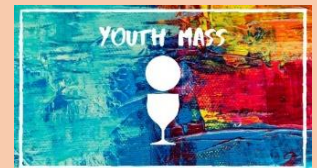
For more information, contact Ms. Amy at [asewell@spnmd.org](mailto:asewell@spnmd.org).



## MAY 3

### Youth Mass at 5 PM followed by Life Teen/Edge Youth Ministry

More information about this Youth Ministry program, Please see more information on page 23.



## MAY 6

### MUFFINS WITH MOM 7:30-8:30 AM

All moms are welcome to attend this event with their children. Cost is \$5/family. So that we can prepare with badges, each guest will have to provide their driver's license number, DOB, and email address.

See flyer on page 17. Sign up to attend and pay for the event at:

<https://forms.diamondmindinc.com/stphilipneri/mwm>



**MAY 6**

## FLOWER MART FIELD TRIP

Every student with a signed permission form will be walking to Vince's to purchase flowers for the favorite ladies in their life! We ask that each student bring in a box (shoe box size) to carry their gifts back to school! Money should be sent in an envelope or Ziploc bag labeled with the student's name. Permission slips were sent home in the Thursday envelope on April 23 and are due by Monday, May 4. Each student must have a signed permission slip to participant.



**MAY 7**

## SCHOOL MASS AT 9 AM

All are welcome!



## SPIRIT NIGHT AT ITALIA'S CORNER CAFÉ from 4:00-8:30 PM

Enjoy a tasty meal at our local Italian restaurant! Don't forget to mention SPN when you place your order so we can receive some money!

SPN Spirit Night at Italia's Corner



1st Thursday of the Month  
4:00-8:30 PM  
7089 B&A Blvd.  
Glen Burnie, MD 21061

Please mention SPN when you order for dine-in or carry-out. The Italia's Corner cashier will put all receipts in a basket. SPN will earn 10% back on the total!

**MAY 8 NO SCHOOL**

Please keep our SPN faculty in your prayers as they spend a day refreshing themselves in the love of God on their faculty retreat.



**MAY 9**

## SPN Parish Yard Sale and Car Wash (8-Noon)

Please stop by and pick up your treasures and get your car cleaned! Flyer on Page 20.



**MAY 10**

# HAPPY'S MOTHERS DAY

We pray for all of our moms on their special day!



**MAY 12**

## USED UNIFORM EXCHANGE

**3-5 PM in the Basement**

We realize the cost of uniforms can really add up! We offer this program to exchange gently used uniforms to help out our families. If you have any questions about this program, please contact Ashley Ford at [spnuseduniforms@gmail.com](mailto:spnuseduniforms@gmail.com).

## ST. PHILIP NERI USED UNIFORM EXCHANGE

**3-5 PM DROP OFFS AND SALES  
FIRST TUESDAY OF THE MONTH  
SPN BASEMENT NEXT TO MUSIC ROOM**

PLEASE USE THE FRONT DOORS OF THE SCHOOL TO ENTER.  
THE USED UNIFORM EXCHANGE IS ON THE BASEMENT LEVEL OF THE SCHOOL.

AS WE ARE IN SHORT SUPPLY OF POPULAR ITEMS,  
YOU MAY WANT TO EMAIL FIRST TO SEE IF WE HAVE  
WHAT YOU ARE LOOKING FOR!

EMAIL US:

[spnuseduniforms@gmail.com](mailto:spnuseduniforms@gmail.com)

HOPE TO SEE YOU SOON!

Used	10/7
Uniform	11/4
Dates	12/2
	1/6
	2/3
	3/3
	5/12

**MAY 13**

## TALENT SHOW REHEARSAL

All students in the TALENT SHOW will have a full rehearsal starting right after school!



**MAY 14**

## SPIRIT WEAR DAY

Show your SPN School Spirit by wearing your Spirit T-Shirt with SPN gym sweatpants/shorts.

## SCHOOL MASS AT 9 AM

All are welcome!

## TALENT SHOW at 6 PM

Come check out our talented students in this annual show! Cost is FREE! This event is always a hit with our students and our families. Featuring the Class of 2026 and the school chorus! Flyer on Page 18.



# MAY 15

## GIRLS RUNNING CLUB from 3-4:15 PM

For more information, contact Ms. Amy at [asewell@spnmd.org](mailto:asewell@spnmd.org).



# MAY 19

## 9<sup>th</sup> ANNUAL SPN GOLF TOURNAMENT

We wish our participants the best of luck in this tournament!  
Many thanks to our sponsors! Flyer is on page 19.

To see our list of sponsors, please visit our golf web page at:

<https://spnmd.org/golf-tournament/>

It's not too late to register:

<https://forms.diamondmindinc.com/stphilipneri/golf>



# MAY 20

## HOME AND SCHOOL ASSOCIATION'S

## GENERAL MEMBERSHIP MEETING at 5:00 PM

Every parent in our school is part of the Home and School Association. Please plan to attend to hear news about the 2025-2026 school year events and to vote on new board members!

## SPRING BAND & CHORUS CONCERT - after HSA Meeting

Please enjoy the musical talents of our band and chorus students!

The performance will be in the parish hall as part of the HSA General Meeting.



# MAY 21

## SCHOOL MASS AT 8:15 AM

New time because of FIELD DAY!

Students in all grades will be attending this Mass.

All are welcome!



## WEAR YOUR HOUSE COLORS!

The students will participate in Field Day in their house colors with SPN gym shorts.



## FIELD DAY

This highly anticipated event is always a fun-filled day for our students! So many games! Houses will compete in games set up to build our community into one spirit! Volleyball, Tug-a-War, Sack races just to name a few!



## EARLY DISMISSAL at 12:00 PM

Enjoy your start to a long 4-day weekend.



## FIELD DAY VOLUNTEERS ARE NEEDED!

Please register to volunteer at the link below

<https://spnpe.weebly.com/>



## MAY 22 - NO SCHOOL

Enjoy your Memorial Weekend!



# MAY 24

Praise and Worship at 5 PM followed by Life Teen/Edge Youth Ministry

More information about this Youth Ministry program, Please see more information on page 23.



# MAY 25 - NO SCHOOL

Enjoy Memorial Day



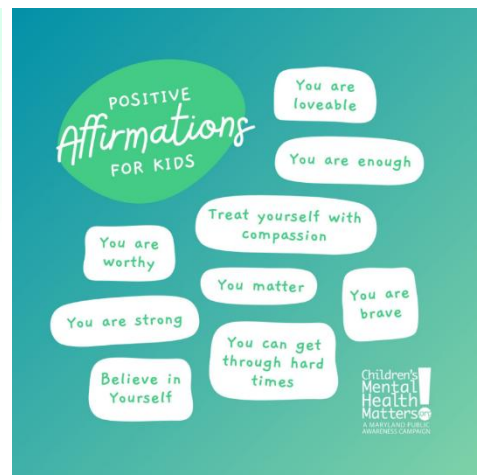
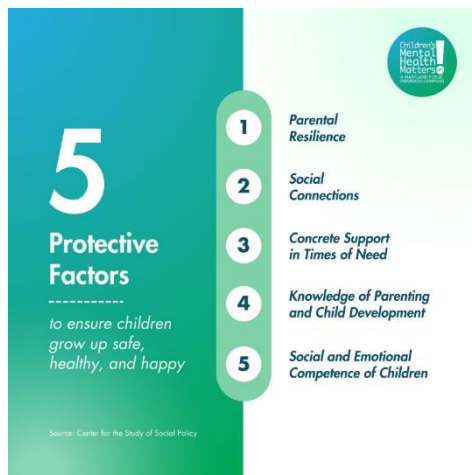
# MAY 26

The traditional 8<sup>th</sup> Grade vs. Parents/Faculty Softball game at 1:30 PM



8<sup>th</sup> Grade Parents - Please register at the link below if you plan to play in this fun game! The 8<sup>th</sup> Grade vs. Faculty and Parents Softball game is a tradition at St. Philip Neri. This year's game will be held on Tuesday, May 26, 2026 from 1:30-2:40 PM. If you are a parent of an 8<sup>th</sup> grade student, or SPN employee, you are encouraged to play. If you think you will be able to join us, go ahead and sign up. If it turns out that you cannot make it, we can cross you off the roster. We will play on Field #3, closest to B&A Blvd.

<https://spnpe.weebly.com/8th-grade-vs-faculty-and-parents-softball.html>



**MAY 28**

**SCHOOL MASS AT 9 AM**

for all grades! All are welcome to attend!

**8<sup>th</sup> GRADE GRADUATION  
INDIVIDUAL AND CLASS PICTURES**

**EARLY DISMISSAL AT 12:00 PM**

For all grades except 8<sup>th</sup> Graders!

Extended care will be open after dismissal.

**8<sup>th</sup> GRADE LUNCHEON AT 12:30 PM**

Time to honor our Class of 2026 Students!



CLASS OF  
**2026**



**LUNCHEON**

**MAY 29**

**EARLY DISMISSAL AT NOON**

due to the 8<sup>th</sup> Grade Graduation

Extended care will be open after dismissal.

**NO LUNCH SERVED THIS DAY!**



**Class of 2026 Graduation**

**Mass and Graduation Ceremony**

**will start at 2 PM in the church!**

**SPIRIT NIGHT AT PANDA EXPRESS**

All Day Long from 9:30 AM to 11:30 PM.

**Code for May 29 is 3853280.** Please be sure to mention SPN when placing your order!



# MAY 31

## SPN Parish Picnic and SPN Alumni Gathering Event

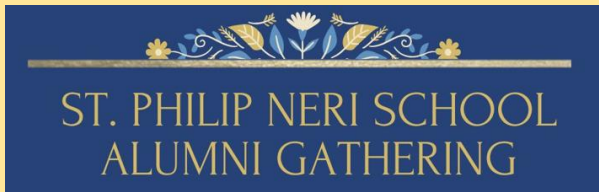
PLACE: SPN Field from 12:30-4:00 PM

Picnic flyer on page 21.

Sign up to ATTEND and/or VOLUNTEER.

See QR Codes on the flyer!

Want to play cornhole? Contact [swenzlick@spnmd.org](mailto:swenzlick@spnmd.org). No signups at the picnic!



# ST. PHILIP NERI SCHOOL ALUMNI GATHERING

Time to reconnect with classmates and  
share memories of our school!



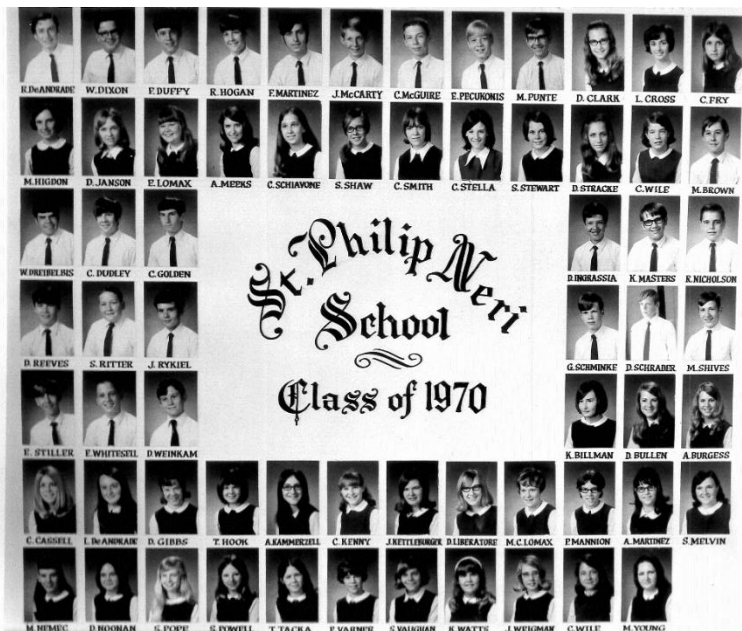
We hope to see you there!

Please RSVP to Mrs. Sue Wenzlick at [swenzlick@spnmd.org](mailto:swenzlick@spnmd.org)



SUNDAY,  
MAY 31,  
2026  
1-4 PM  
SPN  
FIELD

Food  
Drinks  
Raffles  
Games  
Fellowship



A  
L  
U  
M  
N  
I



Please review the list below and let us know if you happen to have any of these pictures in your possession!

1971, 1973 8A, 1974 8B, 1975 8B,  
1978, 1979, 1980, 1981, 1983,  
1986, 1987, 1988, 1989, 1990, 1992,  
1993, and 1995

# MENTAL HEALTH IS *everything*

Mental health is getting enough sleep. Mental health is love from family and friends. Mental health is being part of your community. Mental health is physical health. Mental health is finding ways to move. Mental health is your daily routine. Mental health is nourishing yourself. Mental health is your focus. Mental health is your feelings. Mental health is embracing your identity. Mental health is your culture. Mental health is your joy. Mental health is your laughter. Mental health is asking for help. Mental health is hope. Mental health is having a sense of purpose. Mental health is a hobby to help you relax. Mental health is time outside. Mental health is having a support system. Mental health is setting boundaries. Mental health is healing from trauma. Mental health is how you handle hard days.

**Mental health is having  
more good days, together.**

Learn more about your mental health:  
[mhanational.org/may](http://mhanational.org/may)

**MORE GOOD DAYS** *together*



## Facts About Children's Mental Health

Prompt intervention is key to preventing long-term or severe mental health conditions from persisting into adulthood. By addressing concerns early on, we can empower children to navigate life's challenges with resilience and strength.

**1 in 5**  
children and adolescents have a mental health condition at any given time



**50%**  
of all lifetime cases of mental disorders begin by age 14



**Gaps in Care**  
About half of children with treatable mental health conditions do not receive adequate care.



**Rising Rates**  
Mental health problems in children ages 6 to 17 continue to rise.

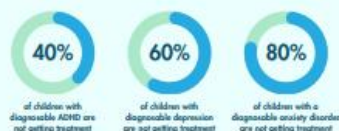
[childrensmentalhealthmatters.org](http://childrensmentalhealthmatters.org)

References  
Substance Abuse and Mental Health Services Administration  
Centers for Disease Control and Prevention  
Mental Health Statistics  
Children's Mental Health Network



## Mental Health Treatment

### THE GAP BETWEEN NEED AND CARE



### Age of Onset for Common Disorders



### ADHD Diagnosis and Treatment



**70%**

of youth in juvenile justice settings meet criteria for a psychiatric diagnosis.

**Mental Illness in the Juvenile Justice System**

Learn more at [www.childrensmentalhealthmatters.org](http://www.childrensmentalhealthmatters.org)  
Source: Child Mind Institute

# PAST DUE

## ENROLLMENT FOR 2026-2027 COMPLETED CHECKLISTS ARE PAST DUE! 40% Missing as of 4/30/26!!!

If you have NOT completed your checklist, your student is in jeopardy of losing their spot at our school. We have a huge waitlist of families waiting to get into SPN.

Ms. Amy has been keeping track of a few families who are waiting for certain information before completing their checklists. If you are NOT on this list and have NOT completed your checklist, please contact Ms. Amy Sewell IMMEDIATELY at [asewell@spnmd.org](mailto:asewell@spnmd.org). We understand that younger siblings new to the school may not have their health forms completed as of this date, so their checklist might not be at 100%. **The CONTRACT and FACTS tuition payment plans must be set up.**

Financial aid awards from the Archdiocese of Baltimore (AOB), SPN SCHOOL and SPN PARISH have been posted and awards notices sent to recipients. Questions about financial aid may be directed to Mrs. Sue Wenzlick at [swenzlick@spnmd.org](mailto:swenzlick@spnmd.org).

**Unless your tuition payment plan is set up by May 1, you are in jeopardy of losing your financial aid.**

## Field Trips

- May 12 - 6<sup>th</sup> and 7<sup>th</sup> Grade Field Trip
- May 20 - Pre-K and K Field Trip
- May 26 - 4<sup>th</sup> Grade Field Trip
- May 27 - 5<sup>th</sup> Grade Field Trip
- May 27 - 8<sup>th</sup> Grade Field Trip to Hershey Park
- June 1 - 1<sup>st</sup> through 3<sup>rd</sup> Field Trip

## Graduation Events

- May 26 - 8<sup>th</sup> Grade vs. Faculty Softball Game
- May 28 - 8<sup>th</sup> Grade Luncheon at 12:30 PM
- May 29 - 8<sup>th</sup> Grade Graduation at 2 PM
- June 9 - Kindergarten Graduation at 8:30 AM



## PICNIC DATES

- June 1 - Pre-K Picnic
- June 2 - Kindergarten Picnic
- June 4 - Grades 4 & 5 Picnic
- June 5 - Grades 6 & 7 Picnic
- June 8 - Grades 1-3 Picnic

# TUITION ASSISTANCE RAFFLE WINNERS

## MARCH 2026

3/01	Patricia Skrzysz	\$100
3/01	Mary Burkhart	\$100
3/04	Lino Deras	\$100
3/06	Colleen Eduvigen	\$50
3/07	Bobbie Whitney	\$100
3/07	Tanya Maisel	\$100
3/08	Emma Galeotti	\$100
3/09	Tricia Marano	\$50
3/11	Joyce Sours	\$100
3/12	Virginia Eduvigen	\$50
3/16	Frederick Priller	\$100
3/16	Jean Dabroura	\$100
3/20	Dan Wenzlick	\$100
3/22	Ken Hess	\$100
3/23	Dolores Hebstreit	\$100
3/24	Joetta Sterrett	\$50
3/24	Kelly Horsley	\$50
3/25	Lauren McCarty	\$100
3/26	Joan Mueller	\$100
3/27	Bobbie Whitney	\$50



## St. Philip Neri School Fan Shop is Open!



SHORT SLEEVE,  
LONG SLEEVE,  
HOODIES AND  
MORE



UNIFORM APPROVED ITEMS



FAMILY SPIRITWEAR  
CLASS HOUSE  
COLOR SHIRTS

FOLLOW THE QR CODE OR LINK TO  
CHECK OUT THE ONLINE SHOP  
AND ORDER TODAY!



CRAB & ANCHOR  
CUSTOM APPAREL



CrabandAnchorApparel.com

10TH ANNUAL

**GOLDEN BOOT SOCCER CAMP**

DISCOUNT CODE: SPN2026

**JUNE 1ST-5TH, 6-8PM**

**ST. PHILIP NERI SCHOOL**

**BOYS & GIRLS 6-13**

**REGISTER AT**

**WWW.AASOCCERACADEMY.NET**

EARLY BIRD DISCOUNT THROUGH APRIL 1ST

## WE ARE LOOKING FOR BUYERS AND SELLERS!

Tickets are sold every month for \$5/ticket.

The ticket is good for the entire month, so you have 30-31 days/chances to win either \$100 or \$50! We have two sets of numbers (000-999) so there could be two winners each day!

To get your tickets, or if you need more information, please contact Mrs. Katie Spielman at 410-859-1212 or email her at [kspielman@spnmd.org](mailto:kspielman@spnmd.org).

# CONGRATULATIONS!



ABOVE - Congratulations to SPN alum Heidi, Class of 2022, and current student at The Catholic High School of Baltimore (Class of 2026), for being recognized as one of this year's Archdiocesan Distinctive Scholars! She was honored at the 34th annual Archdiocese of Baltimore Catholic Schools Distinctive Scholars Convocation.

BELOW - We are proud to congratulate 8th grader Christopher on being named a 2026 Knott Scholar!

Christopher has been awarded the prestigious Knott Scholarship, which will provide full tuition for the next four years at Archbishop Spalding High School.

The Knott Scholarship Funds, including the Marion Burk Knott Scholarship Fund and the Marion I. and Henry J. Knott Scholarship Fund, recognize outstanding students and support their continued education in Catholic schools. Since 1981, these scholarships have helped more than 2,000 scholars pursue academic excellence.

We are so proud of Christopher's hard work, dedication, and achievements. We can't wait to see all he accomplishes in the years ahead!



# St. Philip Neri School Lunch Menu

May 2026

Monday	Tuesday	Wednesday	Thursday	Friday
				1 Cheese Pizza Potato Chips Fruit Milk
4 Chicken Nuggets Corn Fruit Milk	5 Cheeseburger BBQ Chips Fruit Milk	6 Cheese Pizza Fritos Fruit Milk	7 Corn Dogs Carrots with Ranch Cup Fruit Milk	8 <i>School Closed</i>
11 Boneless Chicken Wings Green Beans Fruit Milk	12 Macaroni and Cheese Chips Fruit Milk	13 Chicken Patty Sandwich Corn Fruit Milk	14 Meatballs in Brown Gravy Mashed Potatoes Fruit Milk	15 Cheese Pizza Doritos Fruit Milk
18 Chicken Tenders Broccoli Florets Fruit Milk	19 Taco in a Bag Corn Fruit Milk	20 Cheese Pizza Fritos Fruit Milk	21 <i>12:00pm Dismissal</i>	22 <i>School Closed</i>
25 <i>School Closed</i>	26 Chicken Patty Sandwich Chips Fruit Milk	27 Hot Dog Baked Beans Fruit Milk	28 <i>12:00pm Dismissal</i>	29 <i>12:00pm Dismissal</i>

A variety of fresh fruit and vegetables are served daily. Milk offering is 1% white milk and NF flavored milk.  
 There will be a 'B' lunch option available every day that lunch is served. It will be served with the side lunch items of the day.  
 A Lunch - Main Entree    B Lunch - Hot Dog Entree  
 Menu Subject to Change Without Notice

## LUNCH ACCOUNTS


Lunch charges will be posted to your FACTS PrePay Lunch accounts at the end of each week.



If you have any questions about the lunch program, please contact Nancy Reed at [nreed@spnmd.org](mailto:nreed@spnmd.org).


Questions related to FACTS, please contact Rachel Bruggy at [rbruggy@spnmd.org](mailto:rbruggy@spnmd.org).

**DON'T LET GO OF HOPE; EVEN A FLICKER OF LIGHT CAN LEAD YOU THROUGH THE DEEPEST DARKNESS.**



MINDFUL CHRISTIANITY

*Faith* IS WHEN YOU PRAISE GOD IN THE STORM, TRUST HIM IN THE VALLEY, AND FOLLOW HIM IN THE DARK.







Even when we are not deserving, God still blesses.  
 Even when we are not lovable, God still loves.  
 Even when we are not listening, God still speaks.  
 Even when we are not following, God still leads.  
 Even when we are not obeying, God still forgives.  
 Even when we are not answering, God still calls.  
 Even when we are not faithful, God still stays.  
 I'm so thankful that even when . . . God still does.

@heartprintsfgod



# St. Philip Neri School - May 2026



Sunday	Monday	Tuesday	Wednesday	Thursday	Friday	Saturday
<p>26 <b>APRIL</b></p> <p>5pm Praise &amp; Worship Life Teen/Edge Youth Ministry</p>	<p>27</p> <p>CHORUS 3-4:30pm</p>	<p>28</p>	<p>29 School Store 7:45am-8:00am</p> <p>Hiking Club Group 2 Hike</p> <p>Talent Show Auditions 3-4pm</p>	<p>30</p> <p>School Mass 9am (All Grades)</p> <p>Robotics 3-4:38pm</p> <p>Talent Show Auditions 3-4pm</p>	<p>1 <b>MAY</b></p> <p><b>Band</b></p> <p>HSA Spring Out of Uniform Day (3 of 3)</p> <p>SPN Jesters Girl's Running Club 3-4:15pm (Grades 3-8)</p>	<p>2</p>
<p>3</p> <p><b>YOUTH MASS</b> 5:00 p.m. Life Teen/Edge Youth Ministry</p>	<p>4</p> <p>CHORUS 3-4:30pm</p>	<p>5 <b>Band</b></p>	<p>6 School Store 7:45am-8:00am</p> <p>7:30am-8:30am <i>Muffins with Mom</i></p> <p><i>Flower Mart</i></p> <p>Hiking Club Meeting 3-4pm</p>	<p>7</p> <p>School Mass 9am (All Grades) <i>May Crowning</i></p> <p>Italia's Corner Spirit Night 4-8:30pm</p>	<p>8</p> <p><b>NO SCHOOL</b> (Faculty Retreat)</p>	<p>9</p> <p>SPN Parish Yard Sale &amp; Car Wash 8am - Noon</p>
<p>10</p> 	<p>11</p> <p>CHORUS 3-4:30pm</p>	<p>12 <b>Band</b></p> <p>6th/7th Grade Field Trip</p> <p>Used Uniform Exchange 3-5pm</p>	<p>13 School Store 7:45am-8:00am</p> <p>Talent Show Dress Rehearsal</p>	<p>14</p> <p>School Mass 9am (All Grades)</p> <p>Spirit Wear Day (Spirit Wear Shirt w/ SPN gym shorts)</p> <p>Talent Show @6pm</p>	<p>15 <b>Band</b></p> <p>SPN Jesters Girl's Running Club 3-4:15pm (Grades 3-8)</p>	<p>16</p> <p>Hiking Club Appalachian Trail Hike</p>
<p>17</p>	<p>18</p> <p>CHORUS 3-4:30pm</p>	<p>19</p> <p><b>SPN 9th Annual Golf Tournament</b></p>	<p>20 School Store 7:45am-8:00am</p> <p>PreK/K Field Trip</p> <p>HSA General Mtg. and Spring Band &amp; Chorus Concerts Start at 5:00pm</p>	<p>21</p> <p>School Mass <u>8:15am</u> (All Grds.)</p> <p><b>FIELD DAY</b></p> <p>House Color Day (wear house color w/ SPN gym shorts)</p> <p><b>12pm EARLY DISMISSAL</b></p>	<p>22</p> <p><b>NO SCHOOL</b></p>	<p>23</p> 
<p>24</p> <p>5pm Praise &amp; Worship Life Teen/Edge Youth Ministry</p> <p>31</p> <p><b>SPN Parish Picnic &amp; SPN Alumni Gathering 12:30-4:00pm</b></p>	<p>25</p> <p><b>NO SCHOOL</b></p> 	<p>26</p> <p>4th Grade Field Trip</p> <p>8th Grade vs. Faculty Softball Game 1:30pm</p>	<p>27</p> <p>8th Grade Field Trip to Hershey Park</p> <p>5th Grade Field Trip</p>	<p>28</p> <p>School Mass 9am (All Grades)</p> <p><b>12pm EARLY DISMISSAL</b></p> <p>8th Grade Pictures 8:30am Luncheon 12:30p</p>	<p>29</p> <p><b>12pm EARLY DISMISSAL</b></p> <p><i>8th Grade Graduation Mass &amp; Ceremony At 2:00pm</i></p> <p>Panda Express Spirit Day 9:30am-11:30pm</p>	<p>30</p> 

# MUFFINS



with  
**MOM**



---

Enjoy your morning and start the day with muffins and time with Mom, Grandmom, or a special person!

All siblings are welcome to attend.  
Price is \$5 per family.

**Wednesday, May 6, 2026 - 7:30am to 8:30am**

Please submit registration/payment via the online link below OR the form below **by Friday, May 1, 2026**. You do not need to submit the paper form below, if you complete the registration/payment online.

**Online Registration/Payment Link (you will need Driver's License # & DOB for adults attending):**

<https://forms.diamondmindinc.com/stphilipneri/mwm>

---

Muffins with Mom Registration Form for cash/check payments  
(checks made payable to SPN HSA).

Please submit form and payment by Friday, May 1, 2026

Student's Name(s): \_\_\_\_\_

Total Number of Attendees (Mom/special friend/student/siblings): \_\_\_\_\_

Email Address: \_\_\_\_\_

Name, Driver's License # & DOB of Adult Attendees (on back if needed): \_\_\_\_\_

---

ST. PHILIP NERI CATHOLIC SCHOOL PRESENTS

# TALENT SHOW

THURSDAY  
MAY 14  
6PM

Get ready  
to unleash  
your talent!

Auditions will be held  
Wednesday, April 29 at 3pm  
and  
Thursday, April 30 at 3pm

All auditions must be  
performance ready!  
Email Ms. Amy if you are  
interested  
[asewell@spnmd.org](mailto:asewell@spnmd.org)

BE ON THE  
SPN STAGE!



## St. Philip Neri's 9<sup>th</sup> Annual Golf Tournament Tuesday, May 19, 2026, at Compass Pointe

Online information, registration, sponsorships, and forms can be found on our website at: <https://spnmd.org/golf-tournament/>

### Golfer Registration Information

**Format:** Captain's Choice  
**Registration:** 8 AM  
**Shot Gun Start:** 9 AM  
**Cost:** \$130/golfer

**We are looking for sponsors and golfers for this day of fun! Won't you please join us?**

Deadline to register is May 11, 2026.

**ON MAY 1 THE COST PER GOLFER WILL BE \$140. SO REGISTER EARLY!**

### Sponsorship Opportunities

The Pastor's Package.....	\$1,050
The Principal's Package .....	\$800
The SPN Spirit Package.....	\$700
Camera Cart/Pavilion Banner.....	\$300
Driving Range Sign.....	\$250
Putting Green Sign.....	\$250
Tee Box Sign.....	\$200
Reuse Tee Box Sign.....	\$150

Recognition on Website Address:

<https://spnmd.org/golf-tournament/>

Deadline for Sponsorships is April 24, 2026.

### COURSES THIS YEAR - We will be golfing on the South/West Courses at Compass Pointe

Food and beverage will be provided throughout tournament play including a hot dog at the turn. Lunch and awards will follow play. Prizes to be awarded include CTP on the Par 3s, Longest Drive Contest, Straightest Drive and Team Awards with 1<sup>st</sup>, 2<sup>nd</sup>, and last place finishers. Lots of door prizes!

If you have questions about the tournament or sponsorship opportunities, please call Sue Wenzlick at 443-691-3955 or email at [swenzlick@spnmd.org](mailto:swenzlick@spnmd.org).

#### Payments can be made by Check or Credit Card:

**Check:** Make checks payable to: "St. Philip Neri School" and send to 6401 S. Orchard Road, Linthicum, MD 21090.

**Credit Card Payment:** Go online to <https://forms.diamondmindinc.com/stphilipneri/golf>

*If paying by credit card, you do not need to complete this form. This information is collected online.*

# Yard Sale & Car Wash

St. Philip Neri & St Clement (AC Unit Fundraiser)

Saturday May 9, 2025

8 AM – 12 PM

Rain date **May 23**,  
Rain or shine.  
Pray for sunny skies!

All the funds will be  
for our sister parish  
St Clement AC  
Unit.



## **& Car Wash**

It's time for Spring Cleaning!  
Get those garages and basements cleaned out,  
sell your stuff and put money in your pocket.

**Rent your space TODAY!**

\$25 per space 14x16 = (2 parking car spaces).

Tables are available to rent for \$10, **Must Reserve In Advance.** Please bring your own chair!

**Commercial Vendors are Welcome.**

vgrimm@spn-sc.org 410-859-0571, ext. 16101

Set up starts at 6:00 am, must be set up by 7:40 am

St. Philip Neri Catholic Church - 6405 South Orchard Road, Linthicum MD 21090

Event held on the back parking lot

# St. Philip Neri Parish Family Picnic

Sunday, May 31, 12:30-4:00



**GRILLED FOOD, BEVERAGES,  
DESSERTS, AND SNOWBALLS  
PROVIDED**

*\$\$ Beer and Sangria \$\$*

*\*Signup to bring a sharable side  
salad on attendance signup*

*\*No outside alcoholic drinks  
allowed*

*\$ Donations Appreciated \$  
Thank you for your support!*

**Corn Hole Tournament**  
Cash prize!      16+ to play



Team registration by **May 29**: email  
Sue at [swenzlick@spnmd.org](mailto:swenzlick@spnmd.org), or  
signup at **Connection Point**.

*\*no signups at picnic*



## Games | Family | Fun



Field Games    Face Painting    Kids Crafts    Bounce House  
Pony Rides and Children's Zoo    Pick-up ball games  
Door prizes & 50/50 Raffles    Music by DJ

*\*SPN Alumni Gathering & More!*

**Signup to  
Attend**

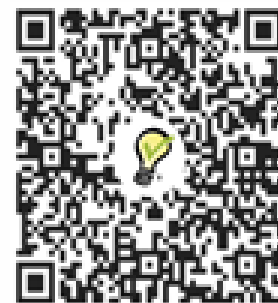


<https://www.signupgenius.com/go/5080E44A4A929A2FD0-63570096-stphilip>



**\*Signup with QR on phone  
camera, via weblink, or at the  
Connection Point after all Masses.**

**Signup to  
Volunteer**



<https://www.signupgenius.com/go/5080E44A4A929A2FD0-63572815-spnparish>



WHERE FAITH & FUN COME TOGETHER

# St. Philip Neri Summer Camp

Age: 6-14 Years Old



**July 13th - August 7th**

SPN Summer Camp offers a fun and enriching experience for children entering 1st through 8th grade. Our four-week program balances structured activities and free play, allowing campers to explore, learn, and grow. Sports camps are designed specifically for students in grades 4-8, while other camps give every child the chance to discover something they love—whether it's arts and crafts, science, or acting. The final week features Vacation Bible School (VBS), open to all campers and filled with joyful, faith-centered activities.

Don't miss out on the opportunity to give your child a summer they'll never forget!

Only **20** Participants /Classroom

For More Information  
summercamp@spn-sc.org  
410-859-0571 X16115

St Philip Neri Church  
6405 S Orchard Rd, Linthicum, MD 21090

Register Now!

spnsummercamp.com



Follow us on Instagram  
**@spn.sc.ug**

Volunteers Needed!

High Schoolers—Join the Adventure and Make a Difference!

# St Philip & St Clement

## - 2025/26 Youth Ministry Calendar -

- September 14<sup>th</sup> **YOUTH MASS** (5PM - 7:30PM)  
 September 28<sup>th</sup> **PRATSE & WORSHIP** (5PM - 7:30PM)
- October 11<sup>th</sup> **FALL YARD SALE & CAR WASH** Meet at SPN at 7 AM  
 October 12<sup>th</sup> **YOUTH MASS** (5PM - 7:30PM)  
 October 26<sup>th</sup> **PRATSE & WORSHIP** (5PM - 7:30PM)
- November 9<sup>th</sup> **YOUTH MASS** (5PM - 7:30PM)  
 November 23<sup>rd</sup> **PRATSE & WORSHIP** (5PM - 7:30PM)  
 November 26<sup>th</sup> **THANKSGIVING service day**. Meet at SPN at 2 PM
- December 14<sup>th</sup> **YOUTH MASS** (5PM - 7:30PM)  
 December 26<sup>th</sup> - January 1<sup>st</sup> **DMG Work-Come**  
 December 28<sup>th</sup> **PRATSE & WORSHIP** (5PM - 7:30PM) Winter break
- January 11<sup>th</sup> **YOUTH MASS** (5PM - 7:30PM)  
 January 25<sup>th</sup> **PRATSE & WORSHIP** (5PM - 7:30PM)
- February 1<sup>st</sup> **YOUTH MASS** (5PM - 7:30PM)  
 February 8<sup>th</sup> **SUPER BOWL night** meet at St Clement at 5PM  
 February 22<sup>nd</sup> **PASTORATE MISSION** (6:30PM - 8PM)
- March 2<sup>nd</sup> **FOOD DRIVE** Join us for a door-to-door Food Drive.  
 March 22<sup>nd</sup> **PRATSE & WORSHIP** (5PM - 7:30PM)
- April 3<sup>rd</sup> **GOOD FRIDAY PASSION PLAY** Meet at SPN  
 April 12<sup>th</sup> **YOUTH MASS** (5PM - 7:30PM)  
 April 18<sup>th</sup> **PIZZA NIGHT** Join us at SPN to make and enjoy some real pizza  
 April 26<sup>th</sup> **PRATSE & WORSHIP** (5PM - 7:30PM)
- May 5<sup>th</sup> **YOUTH MASS** (5PM - 7:30PM) mother day  
 May 9<sup>th</sup> **SPRING YARD SALE & CAR WASH** Meet at SPN at 7 AM  
 May 24<sup>th</sup> **PRATSE & WORSHIP** (5PM - 7:30PM)  
 May XX<sup>th</sup> **Baseball game**



## Outreach Immediate Needs

- Candy (for Homeless)
- Fruit cups
- Cereal Boxes
- Men Underwear (S, M & L) New
- Men shoes (size 11)
- Women shoes (size 7)

Please Mark all items (Outreach)

When did we see you a stranger and welcome you, or naked  
and clothe you?

Matthew 25:38

## YOUTH MINISTRY

# EDGE YOUTH PROGRAM

*Faith Formation, Youth Mass, Praise & Worship,  
Community Service and Fun Social Nights*



Sign up here



**Sunday's evenings  
For 5 to 8 grades**

At St. Philip Neri Church

### St. Clement I & St. Philip Neri Pastorate Children & Youth Ministries

#### Sunday Faith Formation

Grades Kindergarten - 4th

- 10:45-11:45 in St. Philip Neri School
- Late September - early May
- Fee: \$80 per family (includes sibling in grades 5-8 in EDGE)
- Contact Laura Graham: [lgraham@spnmd.org](mailto:lgraham@spnmd.org)



#### First Confession & First Holy Communion Preparation

- For pastorate children in public school & St. Philip Neri School
- Children in grades 2 - 5
- Fee: \$40 per child
- First Confession prep, Wednesday evenings/Saturday mornings in October
- First Holy Communion preparation, Wednesday/Saturday in March & April
- Contact Laura Graham: [lgraham@spnmd.org](mailto:lgraham@spnmd.org)



#### Order of Christian Initiation for Youth (OCIFY)

- Youth in grades 6-12 who have not been baptized or received Holy Eucharist
- Grades 6-8: Friday, 7:00-8:00, beginning Sept. 19
- Grades 9-12: Monday, 7:00-8:00, beginning Sept. 22
- Location: Parish Center Meeting Rooms
- Fee: \$30 per person
- Contact Laura Graham, [lgraham@spnmd.org](mailto:lgraham@spnmd.org)



#### Youth Formation & Ministry - EDGE



- Grades 5-8
- 1st & 3rd Sundays - 6:30-7:45, SPN School
- 2nd & 4th Sundays - 5:00 Youth Mass/Eucharistic Adoration, followed by meal & ministry
- Fee: \$80 (for youth who have no sibling in Faith Formation)
- Contact Matteo, [matteo.santi-amantini@archbalt.org](mailto:matteo.santi-amantini@archbalt.org)

#### CONFIRMATION

- Grades 9-12, in the Parish Center meeting room
- 2nd & 4th Sundays - 5:00 Youth Mass/Eucharistic Adoration, followed by meal & Confirmation preparation
- Fee: \$150
- Contact: Abby Kane, [aKane@spnmd.org](mailto:aKane@spnmd.org)



# PARISH EVENTS AND INFORMATION

<http://www.stclementandstphilipneripastorate.org/>



## SPN PARISH MASS SCHEDULE

### WEEKEND MASSES

Saturday Mass at 5 PM

Sunday Masses at 8:00 AM, 9:30 AM, and 11:30 AM

### DAILY MASS

Thursday at 9:00 AM

Mon, Tues, Wed, Fri at 6:30 PM

Celebrate the Opening of Our  
*Perpetual Adoration Chapel*



*"Be Awakened to  
Relationship"*

*Experience the profound beauty of  
adoration. Families welcome!*

*Flexible days & times  
that fit your schedule.  
Scan QR code to sign up.*

**CONFIRMATION CLASSES** will begin in the fall. For more information, contact Abbey Kane at [akane@spn-sc.org](mailto:akane@spn-sc.org).

**O.C.I.A. CLASSES** If you are interested in joining the Catholic Church, please attend these classes on Tuesday evenings starting with Mass at 6:30 PM. For more information, please contact Deacon Mark Rachid at [mark.rachid@archbalt.org](mailto:mark.rachid@archbalt.org).

**SPN's MOM'S GROUP** meets 2<sup>nd</sup> Monday of the Month at 7:30 PM. For more information, contact Elizabeth at [eadalasio@gmail.com](mailto:eadalasio@gmail.com).

**CATHOLIC WOMEN'S BIBLE STUDY** is called "Walking with Purpose" meets 2<sup>nd</sup> and 4<sup>th</sup> Sundays from 6-7:15 pm and every Wednesday from 9:30-11 AM and 7:15-8:45 PM. For more information, contact Theresa at [theresaewaggoner@gmail.com](mailto:theresaewaggoner@gmail.com).

**CANA FOX "The Voice of Marriage"** is a movement that supports parents in navigating the confusing landscape of new ideas about the human person, sexuality and marriage. The group meets the 3<sup>rd</sup> Sundays of the month at 6:30 PM in Room 7A. Visit [www.canvox.com](http://www.canvox.com) for more information. Contact Laura Graham at [lgraham@spn-sc.org](mailto:lgraham@spn-sc.org) with any questions.

**GIRL SCOUTS** - Meets Mondays from 6:00-7:15 PM. For more information, please contact Maryann Kulesz at [rakak@aol.com](mailto:rakak@aol.com).

### NEED MORE INFORMATION ABOUT SPN?

Contact SPN Business Manager, Kathy Nangle, at [knangle@spn-sc.org](mailto:knangle@spn-sc.org).

# St. Philip Neri School - Spirit Nights 2025-2026



**Italia's Corner Cafe**  
 Burwood Village Center  
 7089 Baltimore Annapolis  
 Blvd., Suite F  
 Glen Burnie, MD 21061

**1st Thursday of the  
 month**  
**4:00 pm - 8:30 pm**

- Thurs., Sept. 4
- Thurs., Oct. 2
- Thurs., Nov. 6
- Thurs., Dec. 4
- ~~Thurs., Jan. 4~~
- Thurs., Feb. 5
- Thurs., Mar. 5
- Thurs., Apr. 2
- Thurs., May 7
- Thurs., June 4
- Thurs., July 2
- Thurs., Aug 6

Please mention SPN when you order for dine-in or carry-out. The Italia's Corner cashier will put all receipts in a basket; SPN will earn 10% back on the total.



**Primanti Bros.**  
 Restaurant & Bar  
 996 Corporate Boulevard  
 Linthicum, MD 21090

**All Day Long**  
**11:00 am - 11:00 pm**

~~Wed., Oct. 15~~  
~~Wed., Apr. 29~~

SPN earns 20% back when you use the code **DINE2DONATE** for online orders or by showing the [FLYER](#) in the restaurant.



**Bubba's 33**  
 7305 Ritchie Highway  
 Glen Burnie, MD 21061

**All Day Long**  
**11:00 am - 11:00 pm**

~~Mon., Aug 25~~  
~~Tues., Dec 9~~  
~~Tues., Feb 17~~  
~~Wed., June 10~~

Show the [fundraiser flyer](#) to your server or mention the fundraiser. SPN will earn 10% back on the food sales. Good for dine-in or carry-out



**Chick-fil-A**  
 Centre at Glen Burnie  
 6709 Ritchie Highway  
 Glen Burnie, MD 21061

**4:00 pm - 8:00 pm**

~~Mon., Sept. 8~~  
~~Mon., Nov. 10~~  
~~Mon., Jan. 12~~  
~~Mon., Apr. 13~~

Mention our school to the cashier inside or at the drive-thru to earn 15% of the total for SPN. Mobile orders do not count toward the fundraiser.



**Panera Bread**  
 1451 W Nursery Road  
 Linthicum, MD 21090

**4:00 pm - 8:00 pm**

~~Mon., Oct 27~~  
~~Mon., Mar 23~~

ORDER ONLINE FOR PICKUP USING CODE **FUND4U**

OR SHOW THE FLYER IN THE RESTAURANT for SPN to earn 20% of your order total.



**Panda Express**  
 6620-A Ritchie Hwy,  
 Glen Burnie, MD 21061

**All Day Long**  
**9:30 am - 11:30 pm**

~~Fri., Dec 19~~  
 code 3843416

~~Fri., Feb 13~~  
 code 3844956

~~Thurs., May 24~~  
~~Fri., May 29~~  
 code 3853280

Order online and enter the fundraiser code listed above OR show the flyer in the restaurant for SPN to earn 20% of your order total.

# ST. PHILIP NERI TUITION RAFFLE

Supporting the SPN H.S.A.



..... Top Prize .....

**ONE FULL YEAR OF TUITION\***  
**VALUED @ \$7,375**

.....  
Or \$2,500 Cash Option

Ticket Price:

**\$25**

3 for \$60 | 5 for \$100

Drawing Date:

**June 2026**

@ St. Philip Neri School

**ORDER TICKETS ONLINE @**

**>>> [forms.diamondmindinc.com/stphilipneri/HSATuition](https://forms.diamondmindinc.com/stphilipneri/HSATuition) <<<**

For more information, please email [SPNHSAMD@gmail.com](mailto:SPNHSAMD@gmail.com).

\*Minimum of 400 tickets must be sold to award the St. Philip Neri Tuition prize, or top prize reverts to \$2,500 cash option. Tuition prize is transferrable and must be redeemed during the 2026/2027 school year. Winner is responsible for all taxes, please consult a tax professional.

Sponsor & Proud Supporter:

**TOMAS BROTHERS**  
Home Improvement

[TomasBrothers.com](https://TomasBrothers.com)