



2025-2026 School Year



Official PBIS Silver School & 2024 Kindness Certified School
2021-2024 Top Work Places – 4 years in a row

Social Media

Facebook:

St. Philip Neri Catholic School

Instagram: [Spnjesters](#)

Tik Tok:

[stphilipnerimdjesters](#)

APRIL 2026

INFORMATIONAL FLYERS INCLUDED IN THIS NEWSLETTER:

SCHOOL EVENTS – April Calendar, April Lunch Menu, 2026-2027 Tuition Letter, HSA Tuition Raffle Flyer, HSA SPIRIT NIGHTS, SPN Golf Tournament (5/19), SPN Spring Musical (April 17 and 18), and SPN Alumni Gathering (5/31)

PARISH EVENTS –Damascas Summer Camp, Golden Boot Soccer Camp, March for Life (4/6), and Yard Sale and Car Wash (5/9)

Looking Ahead

April 1	Spring Uniforms Start
April 2	HOLY THURSDAY - NO SCHOOL
April 2	Spirit Night at Italia's Corner Cafe from 4:00-8:30 PM
April 3	GOOD FRIDAY - NO SCHOOL
April 3	SPN Youth Ministry Good Friday Passion Play
April 3	Linthicum Community Crosswalk starts at Noon at SPN
April 4	HOLY SATURDAY
April 5	HAPPY EASTER - HE HAS RISEN
April 6-10	Easter Break
April 12	SPN Youth Mass at 5 PM followed by Life Teen/Edge Youth Ministry
April 13	Classes resume after Easter Break
April 13	Spirit Night at Chick-fil-A from 4-8 PM
April 15	Race for Education
April 16	School Mass for all Grades at 9 AM
April 17	Out Of Uniform - Home and School Association (Day 2 of 3)
April 17	Spring Musical - THE LITTLE MERMAID at 6 PM
April 18	Spring Musical - THE LITTLE MERMAID at 1 PM and 6 PM
April 18	SPN Youth Ministry Pizza Night
April 20-23	Spring MAP Testing Week
April 23	School Mass for all Grades at 9 AM
April 24	SPN Jesters Running Club from 3-4:15 PM

April 24 No School Lunch Served (Must bring lunch from home)
April 24 SPN Youth Sports Program Family Bingo (6 PM doors open; 7 PM Bingo)
April 26 Praise & Worship at 5 PM followed by Life Teen/Edge Youth Ministry
April 28 Pre HSPT for Grade 7 Students
April 29 & 30 Talent Show Auditions from 3-4 PM
April 30 School Mass for all Grades at 9 AM

SPN GOLF TOURNAMENT - May 19, 2026

<https://forms.diamondmindinc.com/stphilipneri/golf>

See flyer on page 17. We are looking for gift card donations (restaurants, stores, etc.) for the SPN Golf Tournament.

A \$25 gift card will count towards two volunteer hours.

Please contact Mrs. Sue Wenzlick with any questions at swenzlick@spnmd.org



St. Philip Neri School 410-859-1212 office@spnmd.org spnmd.org

Mission Statement:

St. Philip Neri School is dedicated to fostering Catholic faith and academic excellence. Under the guidance of the Holy Spirit, students are provided the opportunity to develop their gifts and talents while striving to become active members of their church. A foundation for future success and life-long learning is provided in partnership with the family, parish and school community.

HOME AND SCHOOL ASSOCIATION NEWS

SPIRIT NIGHTS IN APRIL

APRIL 2 - Spirit Night at Italia's Corner from 4:00-8:30 PM

APRIL 13 - Spirit Night at Chick-fil-A from 4:00-8:00 PM

APRIL 17 - HSA OUT-OF-UNIFORM DAY (Day 2 of 3)

The HSA is sponsoring three out-of-uniform days with proceeds going towards HSA-sponsored events. The cost is \$10 for all three days paid in advance or \$5 each day of. Dates are: March 27 (past), April 17, and May 1.

ONLINE PAYMENT LINK:

<https://forms.diamondmindinc.com/stphilipneri/hsaout-of-uniform/>

GET YOUR HSA TUITION RAFFLE TICKETS TODAY!

Win a year of FREE tuition for the 2026-2027 school year OR \$2500 in cash!

Ticket Price is 1 for \$25, 3 for \$60, or 5 for \$100.

Drawing date will be June 2026.

Flyer is on the last page of this newsletter. To purchase tickets online, please visit:

<https://forms.diamondmindinc.com/stphilipneri/hsatuition>

For general information on HSA-Sponsored events, activities, and committees visit:

<https://spnmd.org/home-school-association/>

For questions about any HSA activity, please send an email to SPNHSAMD@gmail.com.

St. Philip Neri Parish Holy Week Information

See Page 17 for listing of Holy Week schedule including confessions.

APRIL 1 Spring is here!

SPRING/SUMMER UNIFORMS START

Please review policies for Spring/Summer Uniforms!

See pages 73-78 in the Parent-Student Handbook.

Nourishing the Soul, Mind & Body



St. Philip Neri School
9401 South Orchard Road
Linthicum, Maryland 21090
410-859-1212
www.spnmd.org

Parent-Student Handbook
2025 - 2026

APRIL 2 - NO SCHOOL

HOLY THURSDAY

Holy Thursday is the commemoration of the Last Supper of Jesus Christ when he established the sacrament of Holy Communion prior to his arrest and crucifixion. Jesus celebrated the dinner as a Passover feast.

When Jesus washes the disciples' feet, it is a Symbolic reminder about His authority to forgive sin (Matthew 9:6, Mark 2:10). The disciples, just like any of us, were sinful and in need of redemption. Thankfully, Jesus knelt down to show that He is more than willing to wash us clean (Psalm 51:1-12).

6:30 PM - HOLY THURSDAY MASS AT SPN

8:00-11:00 PM - ADORATION IN THE GYM

SPIRIT NIGHT AT ITALIA'S CORNER CAFÉ from 4:00-8:30 PM

Enjoy a tasty meal at our local Italian restaurant! Don't forget to mention SPN when you place your order so we can receive some money!



Holy Thursday

Meaning of Jesus Washing His Disciples' Feet

- Jesus shows them an example of humble sacrificial love
- Jesus did what was needed to be done as a humble servant
- Jesus' example is not only for them but for us that we may love one another humbly sacrificing and serving each other meeting spiritual and physical needs

SPN Spirit Night at Italia's Corner



1st Thursday of the Month
4:00-8:30 PM
7089 B&A Blvd.
Glen Burnie, MD 21061

Please mention SPN when you order for dine-in or carry-out. The Italia's Corner cashier will put all receipts in a basket. SPN will earn 10% back on the total!

APRIL 3
NO SCHOOL
GOOD FRIDAY



Good Friday is the day on which Christian and Catholic churches commemorate the crucifixion and death of Jesus Christ.

NOON
Linthicum
Community
Crosswalk

3 PM
Passion
of
Christ
Service
(St. Clement)

6:30 PM
Living
Stations
(by Youth
Ministry)

7:00 PM
Passion
of
Christ
Service

Linthicum Community

CrossWalk

Good Friday, April 3
**“The Power of the Cross:
The Greatest Act of Love”**

Join the Linthicum Christian community in commemorating Jesus' walk 'in humility' to Calvary where He died for love of us.

When: Good Friday, April 3, 2026 starting at 12 Noon

Where: Crosswalk begins at St. Philip Neri Catholic Church at 12 p.m. and continues to Linthicum Heights United Methodist, Holy Cross Orthodox, St Mary & St Athanasius Coptic Church/ St Charles of Brazil and St. John Lutheran churches.

Why: This is a family and youth friendly event which includes time for prayer, meditation, and music all centered on Jesus' passion. Please '**stand up for Christ**' by walking; by taking your faith outside the walls of our churches, by making it visible--giving it a face in our community where the need for the hope and healing power of Christ is needed and all too often overlooked or dismissed.

Those who cannot walk are invited to drive behind the group.

Questions: John Canterna at John.canterna@verizon.net or 410-978-0398
Sponsored by the Christians for Ecumenical Action



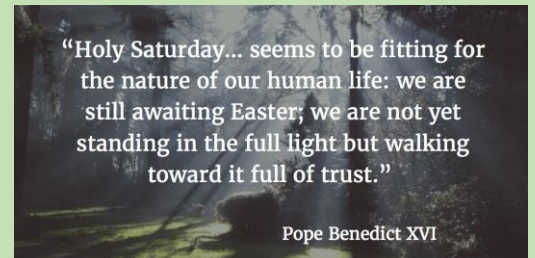
APRIL 4

HOLY SATURDAY

Holy Saturday is the day of quiet reflection and anticipation for Christians around the world. It is the day between the crucifixion of Jesus Christ on Good Friday and his resurrection on Easter Sunday. Holy Saturday is time to mourn the death of Jesus and to prepare for His resurrection.

1 PM - Blessing of Easter Foods

8:00 PM - Easter Vigil Mass at SPN



APRIL 5 - EASTER SUNDAY

The Lamb of God is risen from the grave. Happy Easter to you and your loved ones. On this blessed day, let us bow our heads and celebrate the love of God, who sacrificed His son for our sins.



EASTER MASSES AT SPN:

8:00 AM, 9:30 AM, and 11:30 AM

APRIL 6-10

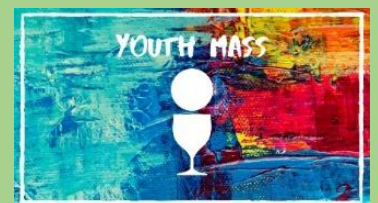
**EASTER BREAK
NO SCHOOL**



APRIL 12

**Youth Mass at 5 PM followed
by Life Teen/Edge Youth Ministry**

Enjoy the praising sounds of our SPN Parish Music Ministry to help heal your soul. Life Teen and Middle School Edge programs will follow. More information about this Youth Ministry program on page 22.



Guide to Holy Week



Palm Sunday

March 29

Sunday before Easter. Celebration of Jesus' triumphal entry into Jerusalem. Observed with palm branches, parades, and celebration.



Maundy Thursday

April 2

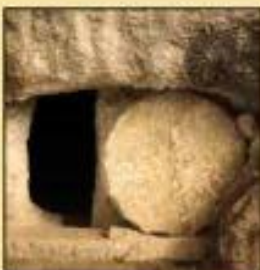
Thursday before Easter. Commemorates the Last Supper. Often observed with foot washing, stripping of the altar, and overnight prayer vigil to keep watch with Jesus in the garden.



Good Friday

April 3

Friday before Easter. Most solemn day of the church year. Observes the day Jesus was crucified. Observed by praying the Stations of the Cross and three hours of silent prayer while Jesus was on the cross.



Holy Saturday

April 4

Saturday before Easter. Observes the day Jesus was in the tomb. This is a day of somber reflection, reflecting on what we'd miss in a world without Jesus.



Easter Sunday

April 5

Hallelujah! Christ has risen! This day we celebrate the resurrection of Jesus. Sing hallelujahs and celebrate with great joy.

APRIL 13

**CLASSES RESUME
AFTER EASTER BREAK**

**CLASSES
RESUME**

**SPIRIT NIGHT at
CHICK-FIL-A
from 4-8 PM**

Please visit Chick-fil-A and order some yummy food! Please make sure that you mention SPN when you place your order so we can Earn 15% of the sales!

**Spirit Night at Chick-fil-A
from 4:00-8:00 PM**



**Sept. 8
Nov. 10
Jan. 12
Apr. 13**

Mention our school to the cashier inside or at the drive-thru to earn 15% of the total for SPN. Mobile orders do not count toward the fundraiser. Centre at Glen Burnie 6709 Ritchie Highway Glen Burnie, MD 21061

APRIL 15

RACE FOR EDUCATION

Get ready to run some laps!

Students to wear their gym uniform!

Volunteers will be needed for this event! Students will be running around the Parish Field! All proceeds from this event help our ever changing SPN

Technology Department! Donation link:

<https://forms.diamondmindinc.com/stphilipneri/rfe>

**Race
For
Education**



Promoting
health,
school spirit and
a sense of
accomplishment

APRIL 16

SCHOOL MASS AT 9 AM

All are welcome!



APRIL 17

HSA OUT-OF-UNIFORM DAY (Day 2 of 3)

The HSA is sponsoring three spring out-of-uniform Days with proceeds going towards HSA-sponsored events. The cost is \$10 for all three days paid in advance or \$5 each day of.

Dates are: March 27 (past), April 17, and May 1



ONLINE PAYMENT LINK:

<https://forms.diamondmindinc.com/stphilipneri/hsaout-of-uniform!>

APRIL 17 AND 18

THE LITTLE MERMAID

Get ready to enjoy the many talents of our SPN students at our Spring Musical! Flyer and sponsorship opportunities can be found on Page 16.

SHOW TIMES: Friday at 6 PM,
Saturday at 1 PM and 6 PM
Cost is \$8/ticket.

TICKET LINK: <https://forms.diamondmindinc.com/stphilipneri/spnmusical>



APRIL 18

SPN Youth Ministry Pizza Night

For more information about this event, please contact Matteo Santi Amantini at matteo.santi-amantini@archbalt.org or call at 410-859-0571 ext. 16115



APRIL 20-23

MAP TESTING WEEK

for students Grades 1 through 8

MAP stands for Measures of Academic Progress. MAP is a three-part test that measures student knowledge in reading, language in reading, language usage, and mathematics. Students in Grades 1 through 8 should be well rested for taking these tests.

It is extremely important that students be on time for testing days!



APRIL 23

SCHOOL MASS AT 9 AM

All are welcome!



APRIL 24

GIRLS RUNNING CLUB from 3-4:15 PM

For more information, contact Ms. Amy at asewell@spnmd.org.

SPN YOUTH SPORTS FAMILY BINGO NIGHT

See flyer on Page 19.



APRIL 26

Praise and Worship at 5 PM followed by Life Teen/Edge Youth Ministry

Enjoy the praising sounds of our SPN Parish Music Ministry to help heal your soul. Life Teen and Middle School Edge programs will follow. More information about this Youth Ministry program on page 22.



APRIL 28

Pre-HSPT (High School Placement Test)

7th Grade Students Only

Students will take the preliminary High School Placement Test.



APRIL 29

TALENT SHOW AUDITIONS

Last audition date to secure a spot in our Talent Show from 3-4 PM.

The date of the show is May 14.



APRIL 30

SCHOOL MASS AT 9 AM

All are welcome!



TALENT SHOW AUDITIONS

Last audition date to secure a spot in our Talent Show from 3-4 PM.

The date of the show is May 14.



We look forward to seeing the talents of our school students!

**ST. PHILIP NERI SCHOOL
ALUMNI GATHERING**

Time to reconnect with classmates and share memories of our school!



**SUNDAY,
MAY 31,
2026
1-4 PM
SPN
FIELD**

Food
Drinks
Raffles
Games
Fellowship



We hope to see you there!

Please RSVP to Mrs. Sue Wenzlick at swenzlick@spnmd.org



St. Philip Neri Catholic School

6401 South Orchard Road

Linthicum Heights, Maryland 21090-2628

(410) 859-1212 www.spnmd.org

March 11, 2026

Dear Parents:

As we plan for the next academic year at St. Philip Neri School, we extend our heartfelt gratitude to you for entrusting us with the education and formation of your children. We are immensely proud of the progress and achievements they have made thus far, and we remain committed to providing them with the highest standards of academic excellence and spiritual growth.

We write to you today to address an important matter regarding tuition expenses and the anticipated rise in tuition for the upcoming academic year. As you know, maintaining the quality of education and ensuring the sustainability of our school's programs and facilities require careful financial planning and resource allocation. Over the past few years, we have diligently managed our budget to balance the increasing costs associated with providing a comprehensive Catholic education while striving to keep tuition rates as affordable as possible for our families.

Tuition and per-pupil costs are not the same. The average state per-pupil cost of educating each child is approximately \$19,800. Despite our best efforts to control expenses, we find it necessary to implement a modest increase of \$225 in tuition for the 2026-2027 school year. This decision was made after careful consideration and consultation with our School Board, considering rising operational costs, faculty salaries, facility maintenance, and enhancements to our academic and extracurricular programs.

We understand the financial commitments that families make to prioritize their children's education, and we remain deeply committed to ensuring that a Catholic education at St. Philip Neri remains accessible to all who seek it. Our goal is to foster a community where every child has the opportunity to thrive academically, spiritually, and personally.

2026-2027 TUITION

	FAMILY TOTAL	COST BREAKDOWN
ONE CHILD	\$7,600	\$7,600
2 CHILDREN	\$15,100	\$7,600 + \$7,500 (2nd Child)
3 CHILDREN	\$22,500	\$7,600 + \$7,500 + \$7,400 (3rd Child)
4 CHILDREN	\$29,800	\$7,600 + \$7,500 + \$7,400 + \$7,300 (4th Child)

Thank you for your continued partnership and support of Catholic education at St. Philip Neri School. Together, we can overcome challenges and continue to provide our children with a strong foundation for lifelong learning and service to others.

Respectfully,

Christy Spurgeon, School Board President

Kate Daley, Principal

TUITION ASSISTANCE RAFFLE WINNERS

FEBRUARY 2026

2/02	Mary Rice	\$100
2/03	Barbara Sendeck	\$50
2/06	James Wieber	\$50
2/08	Linda Shepherd	\$100
2/11	John Polsinelli	\$100
2/12	Maretta Robinson	\$50
2/21	Frederick Priller	\$50
2/22	Ann Georgiou	\$100
2/23	Kara Anderson	\$100
2/24	Christine Wright	\$50
2/28	Tricia Mareno	\$100



WE ARE LOOKING FOR BUYERS AND SELLERS!

Tickets are sold every month for \$5/ticket. The ticket is good for the entire month, so you have 30-31 days/chances to win either \$100 or \$50! We have two sets of numbers (000-999) so there could be two winners each day!

To get your tickets, or if you need more information, please contact Mrs. Katie Spielman at 410-859-1212 or email her at kspielman@spnmd.org.

St. Philip Neri School Fan Shop is Open!



SHORT SLEEVE,
LONG SLEEVE,
HOODIES AND
MORE



UNIFORM APPROVED ITEMS



FAMILY SPIRITWEAR
CLASS HOUSE
COLOR SHIRTS

FOLLOW THE QR CODE OR LINK TO
CHECK OUT THE ONLINE SHOP
AND ORDER TODAY!



CRAB & ANCHOR
CUSTOM APPAREL



CrabandAnchorApparel.com

BOOK FAIR!

BOOK FAIR WINNERS
SPRING 2026

GUESS HOW MANY MINI EASTER EGGS! 204

THE WINNER: SADIE 2B EXACT GUESS!

RAFFLE WINNERS:



AVA PKB
NATHAN KB
ABIGAIL 1A
ANDREW 1B
DECLAN 2A
EMILIA 3B
CAMERON5A
ARIELLA 6A
SADIE 7B
EMELY 8B



Dear SPN Families,

We are excited to share the results of our Great Kindness Challenge! During the week of February 9-13, our students went above and beyond showing kindness to one another, and it truly made a difference in our school community!



Altogether, SPN students completed an incredible 3,854 acts of kindness, which have been added to the 2026 Great Kindness Challenge worldwide total. This is something we can all be very proud of!

In addition to spreading kindness, students were also working together to earn points for their Houses. Here are our houses Acts of Kindness results:

- **Sapientia House** performed the most acts of kindness with 597 (597 points)
- **Timor Domini House** performed 578 acts of kindness (578 points)
- **Pietas House** performed 539 acts of kindness (539 points)
- **Fortitudo House** performed 464 acts of kindness (464 points)
- **Consilium House** performed 452 acts of kindness (452 points)
- **Scientia House** performed 421 acts of kindness (421 points)
- **Ingenium House** performed 409 acts of kindness (409 points)
- **Intellectus House** performed 394 acts of kindness (394 points)

Congratulations to all of our Houses on an amazing job! More importantly, thank you for choosing kindness, showing compassion, and treating one another the way Jesus calls us to each day.

As we continue through Lent, students now have another opportunity to serve others while earning House points. We have begun our **Operation Mato Grosso Lenten Outreach Project (March 16-28)**, and Houses will earn points based on the number of items donated.

This is a wonderful way for our students to live out their faith through service. Every donation helps those in need while supporting their House.

Let's keep that same spirit of kindness going!

Thank you for your continued support as we grow in love and service, following Jesus this Lenten season.



Way to go, SPN students!

St. Philip Neri School Lunch Menu

April 2026

Monday	Tuesday	Wednesday	Thursday	Friday
		1 Cheese Pizza Potato Chips Fruit Milk	2 <i>Easter Break</i> <i>Holy Thursday</i>	3 <i>Easter Break</i> <i>Good Friday</i>
6 <i>No School</i> <i>Easter Break</i>	7 <i>No School</i> <i>Easter Break</i>	8 <i>No School</i> <i>Easter Break</i>	9 <i>No School</i> <i>Easter Break</i>	10 <i>No School</i> <i>Easter Break</i>
13 Chicken Patty Sandwich Green Beans Fruit Milk	14 Cheeseburger Chips Fruit Milk	15 Corn Dogs Corn Fruit Milk	16 Chicken n Dumplings Carrots with Ranch Cup Fruit Milk	17 Cheese Pizza Doritos Fruit Milk
20 Chicken Tenders Broccoli Florets Fruit Milk	21 Taco in a Bag Corn Fruit Milk	22 Cheese Pizza BBQ Chips Fruit Milk	23 Pulled Pork Sandwich Carrots Fruit Milk	24 <i>No School Lunch Served</i> <i>Bring a Lunch From Home</i>
27 Boneless Chicken Wings Vegetable Medley Fruit Milk	28 Chili with a Corn Muffin Green Beans Fruit Milk	29 Macaroni n Cheese Corn Fruit Milk	30 Fish Sticks Baked Beans Fruit Milk	
<p>A variety of fresh fruit and vegetables are served daily. Milk offering is 1% white milk and NF flavored milk. There will be a 'B' lunch option available every day that lunch is served. It will be served with the side lunch items of the day. A Lunch - Main Entree B Lunch - Hot Dog Entree Menu Subject to Change Without Notice</p>				

LUNCH ACCOUNTS

Lunch charges will be posted to your
FACTS PrePay Lunch accounts at the end of each week.





If you have any questions about the lunch program,
please contact Nancy Reed at nreed@spnmd.org.
Questions related to FACTS, please contact Rachel Bruggy at rbruggy@spnmd.org.

Reminder of Weather Related School Closing & Delayed Opening Guidelines

In the event of inclement weather, you will be notified through the Alert system at the email(s) and phone number(s) you have provided for this purpose when you registered. The email alert system is the same as the one you are receiving this email from.

St. Philip Neri School follows Anne Arundel County Public Schools (AACPS) in closing for weather emergencies. If AACPS is closed for the day due to inclement weather, SPN will also be closed. For early closings or delayed start times, SPN follows the same as AACPS (i.e. 2-hour delay). If AACPS cancels weekend or after-school activities, all SPN activities will also be canceled.

Listen to WBAL Radio (1090 AM), watch WBAL-TV (Channel 11), or check for an alert email message and phone calls, or visit our social media pages for updates.. If schools are closed due to inclement weather, Extended Care is also closed.


St. Philip Neri School - April 2026


Sunday	Monday	Tuesday	Wednesday	Thursday	Friday	Saturday
29 MARCH  Palm Sunday	30 CHORUS 3-4:30pm	31 NO School Lunch Served (MUST bring a lunch from home) House Activity & Color Day (wear house color w/ SPN gym sweatpants)	1 April School Store 7:45am-8:00am Junior Robotics 3-4pm Spring Uniform Begins <i>The Little Mermaid Rehearsal 3-6pm</i>	2 NO SCHOOL  Holy Thursday Italia's Corner Spirit Night 4-8:30pm	3 NO SCHOOL  GOOD FRIDAY	4  Holy Saturday
5  He is Risen EASTER SUNDAY	6	7	Happy Easter! Easter Break This Week			11 <i>The Little Mermaid Rehearsal 9am-3pm</i>
12 YOUTH MASS 5:00 p.m. Life Teen/Edge Youth Ministry	13 NO CHORUS Back to School! Chick-fil-A Spirit Night 4-8pm <i>The Little Mermaid Rehearsal 3-6pm</i>	14 <i>The Little Mermaid Rehearsal 3-6pm</i>	15 School Store 7:45am-8:00am RACE FOR EDUCATION Junior Robotics 3-4pm Hiking Club Meeting 3-4pm <i>The Little Mermaid Rehearsal 3-6pm</i>	16 School Mass 9am (All Grades) Robotics 3-4:30pm <i>The Little Mermaid Rehearsal 3-6pm</i>	17 Band HSA Spring Out of Uniform Day (2 of 3) SPN School Presents:  6:00pm	18 1:00pm & 6:00pm
19	20 CHORUS 3-4:30pm	21 MAP TESTING WEEK Grades 1-8	22 School Store 7:45am-8:00am Hiking Club Group 1 Hike	23 School Mass 9am (All Grades) T3 Interims Robotics 3-4:30pm	24 Band NO School Lunch Served (MUST bring a lunch from home) SPN Jesters Girl's Running Club 3-4:15pm (Grades 3-8) Youth Sports Family Bingo 6pm Doors Open, 7pm Bingo	25
26 5pm Praise & Worship Life Teen/Edge Youth Ministry	27 CHORUS 3-4:30pm	28 Band	29 School Store 7:45am-8:00am Hiking Club Group 2 Hike Talent Show Auditions 3-4pm	30 School Mass 9am (All Grades) Robotics 3-4:30pm Talent Show Auditions 3-4pm	1 MAY Band HSA Spring Out of Uniform Day (3 of 3) SPN Jesters Girl's Running Club 3-4:15pm (Grades 3-8)	2



**ST. PHILIP NERI CATHOLIC SCHOOL
PRESENTS**



Friday, April 17 at 6pm
Saturday, April 18 at 1pm
Saturday, April 18 at 6pm

<https://forms.diamondmindinc.com/stphilipneri/spnmusical>

**Would you like to send a special message to one of our talented cast or crew members?
Do you have a business you would like to advertise?**

Below is a price list for placing ads and messages in our full color show program.

Patron Ad	\$2	Name only:	Mr. & Mrs. George Smith
	\$3	2-line message	Good luck, Fred!
			Love, Mom and Dad
Sponsor ad	\$5	$\frac{1}{4}$ page advertisement or message	
	\$10	$\frac{1}{2}$ page advertisement or message	
	\$15	Full page advertisement or message	

Please send all ads to Ms. Amy Sewell asewell@spnmd.org

The deadline for submitting ads is April 12. No late ads can be accepted.



St. Philip Neri's 9th Annual Golf Tournament Tuesday, May 19, 2026, at Compass Pointe

Online information, registration, sponsorships, and forms can be found on our website at: <https://spnmd.org/golf-tournament/>

Golfer Registration Information

Format: Captain's Choice
Registration: 8 AM
Shot Gun Start: 9 AM
Cost: \$130/golfer

We are looking for sponsors and golfers for this day of fun! Won't you please join us?

Deadline to register is May 11, 2026.

ON MAY 1 THE COST PER GOLFER WILL BE \$140. SO REGISTER EARLY!

Sponsorship Opportunities

The Pastor's Package.....	\$1,050
The Principal's Package	\$800
The SPN Spirit Package.....	\$700
Camera Cart/Pavilion Banner.....	\$300
Driving Range Sign.....	\$250
Putting Green Sign.....	\$250
Tee Box Sign.....	\$200
Reuse Tee Box Sign.....	\$150

Recognition on Website Address:
<https://spnmd.org/golf-tournament/>
 Deadline for Sponsorships is April 24, 2026.

COURSES THIS YEAR - We will be golfing on the South/West Courses at Compass Pointe

Food and beverage will be provided throughout tournament play including a hot dog at the turn. Lunch and awards will follow play. Prizes to be awarded include CTP on the Par 3s, Longest Drive Contest, Straightest Drive and Team Awards with 1st, 2nd, and last place finishers. Lots of door prizes!

If you have questions about the tournament or sponsorship opportunities, please call Sue Wenzlick at 443-691-3955 or email at swenzlick@spnmd.org.

Payments can be made by Check or Credit Card:

Check: Make checks payable to: "St. Philip Neri School" and send to 6401 S. Orchard Road, Linthicum, MD 21090.

Credit Card Payment: Go online to <https://forms.diamondmindinc.com/stphilipneri/golf>

If paying by credit card, you do not need to complete this form. This information is collected online.

HOLY WEEK SCHEDULE

PASTORATE OF ST. PHILIP NERI & ST. CLEMENT I

Confessions for Palm Sunday, March 28 and 29

St. Phillip Neri Saturday 3:30-4:45pm (English)
St. Clement Saturday 3:00-3:45pm (English), 5:10-5:50pm (Spanish)

Masses for Palm Sunday, March 28 and 29

St. Phillip Neri Saturday 5pm
Sunday 8:00am, 9:30 am (live-streamed), 11:30am
5pm (Praise and Worship with Adoration)
St. Clement Saturday 4:00pm (English), 6:00pm with procession beginning
outside at 5:30pm (Spanish)
Saturday, 7:15pm Passion Play (Spanish)
Sunday 8:00am (Spanish), 10:00am (English)

Monday, March 30 (Please note, no evening Mass at St. Philip Neri – there is an 8:00am Mass at St. Clement)

Chrism Mass 7:00pm Mass at the Cathedral of Mary, Our Queen
5200 N. Charles St., Baltimore, MD 21210

Holy Thursday, April 2

St. Phillip Neri 6:30pm Mass of the Lord's Supper (live-streamed)
Adoration after Mass until 11:00pm in the Gym
St. Clement 6:30pm Mass of the Lord's Supper (Spanish)
Adoration after Mass until 11:00pm

Good Friday, April 3 (Please note, no Confessions on Good Friday)

St. Phillip Neri 12:00pm Ecumenical Cross Walk
6:30pm Youth Living Stations of the Cross
7:00pm Passion Service
St. Clement 3:00pm Passion Service (English)
7:00pm Passion Service (Spanish)

Holy Saturday, April 4 (Please note, no Confessions on Holy Saturday)

St. Phillip Neri 1:00pm Blessing of Easter Foods
8:00pm Bi-lingual Easter Vigil Mass (live-streamed)

Easter Sunday, April 5, HE IS RISEN, ALLELUIA

St. Phillip Neri 8:00am, 9:30am (live-streamed), 11:30am
St. Clement 8:00am (Spanish), 10:00am (English)

WE NEED YOU!



If you have a heart for kids, have we got
an opportunity for you!!

We have immediate openings for

Day Care Assistants

18 and older

M-F 2:45-6:00pm

Contact Carla @ 667-289-7112 to apply



10TH ANNUAL

GOLDEN BOOT SOCCER CAMP

DISCOUNT CODE: SPN2026

JUNE 1ST-5TH, 6-8PM
ST. PHILIP NERI SCHOOL
BOYS & GIRLS 6-13
REGISTER AT
WWW.AASOCCERACADEMY.NET

EARLY BIRD DISCOUNT THROUGH APRIL 1ST

SPN Youth Sports presents...

Family Bingo Night



Specials!

50/50

Cash Prize!



*Raffles & Fun
Prizes!*

April 24th, 2026

St. Philip Neri Gym

6:00pm: Doors Open w/ Food

7:00pm: Bingo Begins!

Reserve Your Tickets!

\$25 each

Purchase online: spnyouthsports.com

(online registration tab)

One ticket required per person for entry, including children.
Bingo specials & raffles sold separately at the event.
Table requests for groups of 6+ can be submitted at ticket purchase.

www.spnyouthsports.com

spnyouthsports@gmail.com

Yard Sale & Car Wash

St. Philip Neri & St Clement (AC Unit Fundraiser)

Saturday May 9, 2025

8 AM – 12 PM

Rain date **May 23**,
Rain or shine.
Pray for sunny skies!

All the funds will be
for our sister parish
St Clement AC
Unit.



& Car Wash

It's time for Spring Cleaning!
Get those garages and basements cleaned out,
sell your stuff and put money in your pocket.

Rent your space TODAY!

\$25 per space 14x16 = (2 parking car spaces).

Tables are available to rent for \$10, **Must Reserve In Advance.** Please bring your own chair!

Commercial Vendors are Welcome.

vgrimm@spn-sc.org 410-859-0571, ext. 16101

Set up starts at 6:00 am, must be set up by 7:40 am

St. Philip Neri Catholic Church - 6405 South Orchard Road, Linthicum MD 21090

Event held on the back parking lot

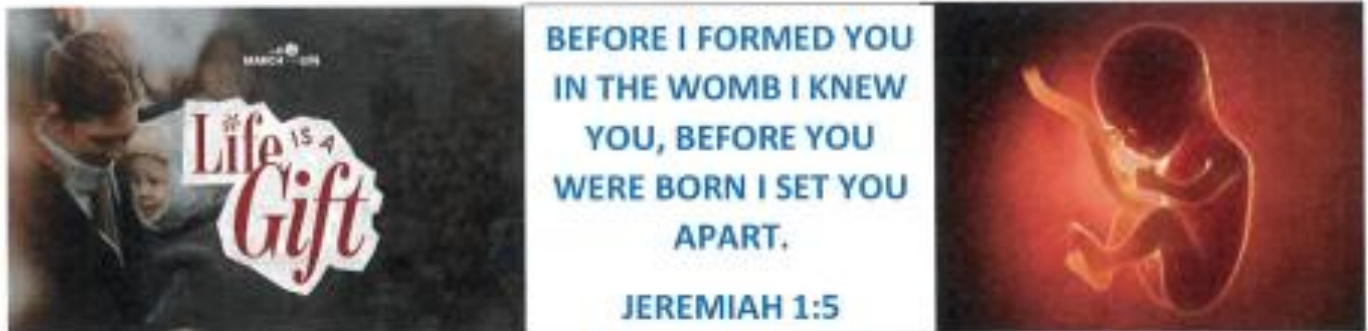
Maryland March for life

New date: April 6, 2026

Beyond Abortion: Because women deserve better.

Join us again in 2026 on Monday April 6, at St. Mary's Church and School in Annapolis to march through the streets and rally before the State House to show our legislators we are **STRONG** and **COURAGEOUS** for life!

- 3:30 PM: Parking lot opens
- 4:00 PM: Registration opens
- 4:15 PM: Pizza arrives (last time to get pizza will be 5:45)
- 4:30-5:15 PM: Youth Rally
- 5:30-6:20 PM: Mass begins in St. Mary's Church and Non-Denominational service begins in St. Mary's Marian Hall
- 6:30 PM: March to Lawyer's Mall begins
- 7:00 PM: Rally on Lawyer's Mall, outside of State Capital Building
- 7:30 PM: Rally ends
- 7:45-9 PM: Hot drinks and mixer at St. Mary's.

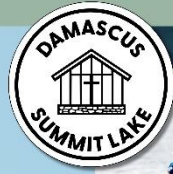


"The spirit of God has made me, and the breath of the Almighty gives me life."

Job 33:4

109 Duke of Gloucester St,
Annapolis, MD 21401

WHERE HIGH-ADVENTURE
ACTIVITIES LEAD TO A
HIGH-ADVENTURE FAITH



A week-long residential camp for students entering
grades 6th-8th and 9th-12th

Scan here to SIGN-UP NOW
Financial Aid Available at Registration
For more information, email Conall@damascus.net



Experience Faith Like Never Before! ¡Vive tu fe como nunca antes!

2026 Damascus Catholic Youth Summer Camp
HIGH SCHOOL - week 3 (June 21-26)
MIDDLE SCHOOL - week 5 (July 5-10)

📍 Summit Lake Camp, 7610 Hampton Valley Rd, Emmitsburg, MD
21727

After the amazing success of the Damascus camp, we're excited to announce that **Damascus is coming to Maryland!**
Después del gran éxito del campamento Damascus, ¡estamos emocionados de anunciar que finalmente tendremos una sede aquí en **Maryland!**

Join the **St. Philip Neri & St. Clement Youth Ministry** for an unforgettable week of **faith, adventure, and friendship** this summer at **Summit Lake**. This isn't your typical church camp — it's a **high-adventure, high-energy, faith-filled experience** where you'll encounter Christ in powerful worship, meaningful talks, small groups, and unforgettable outdoor challenges.

El **Ministerio de Jóvenes de St. Philip Neri y St. Clement** participará juntos en este increíble campamento de **aventura, amistad y fe en Summit Lake**. Este no es un campamento cualquiera — es una **experiencia intensa y transformadora**, donde los jóvenes se encontrarán con Cristo a través de la **oración, adoración, dinámicas, juegos y actividades al aire libre**.

📅 **When / Cuándo:**
HIGH SCHOOL week 3 / June 21-26, 2026
MIDDLE SCHOOL week 5 / July 5-10, 2026

Learn More / Más información

Damascus Info:

<https://www.damascus.net>



Video 1:

<https://youtu.be/goabrWu6OSA?feature=shared>



Video 2:

<https://youtu.be/18tXG3z9rk?feature=shared>

👤 **Who / Quiénes:** Teens entering / Jóvenes que ingresarán a **Grades 6-12**

📅 **Spots / Cupos:** Only **32 spots** reserved for our Pastorate — let's fill them together! / **Solo 32 lugares** reservados para nuestra unidad pastoral — ¡vamos todos juntos!

🕒 **Registration / Inscripción** St. Philip & St. Clement Pastorate will cover **half** of the registration cost. Registration closes on January 31. Please follow these steps to register:
La unidad pastoral de St. Philip & St. Clement cubrirá la mitad del costo de inscripción. La inscripción cierra el 31 de enero. Por favor, siga estos pasos para inscribirse:

1. Go through the registration process / *Complete el proceso de inscripción*
2. When asked about payment, select **"Pay in full"** / *Cuando se le pregunte sobre el pago, seleccionar "Pay in full"*
3. Enter the promo code / *Ingrese el código promocional PHILCLEMENTMD26*
4. Click the checkbox next to your reservation / *Marque la casilla junto a su reservación*
5. Enter payment information (required by the system) / *Ingrese la información de pago (requerida por el sistema).*
6. Submit the registration / *Envíe la inscripción*

📄 **Learn more / Más información:** <https://www.damascus.net/>

Questions? / ¿Preguntas?

Matteo Santi Amantini
matteo.santi-amantini@archbalt.org
410-859-0571 ext. 16115

St Philip & St Clement

- 2025/26 Youth Ministry Calendar -

- September 14th **YOUTH MASS** (SPM - 7:30PM)
 September 28th **PRATSE & WORSHIP** (SPM - 7:30PM)
- October 11th **FALL YARD SALE & CAR WASH** Meet at SPN at 7 AM
 October 12th **YOUTH MASS** (SPM - 7:30PM)
 October 26th **PRATSE & WORSHIP** (SPM - 7:30PM)
- November 9th **YOUTH MASS** (SPM - 7:30PM)
 November 23rd **PRATSE & WORSHIP** (SPM - 7:30PM)
 November 26th **THANKSGIVING service day**. Meet at SPN at 2 PM
- December 14th **YOUTH MASS** (SPM - 7:30PM)
 December 26th - January 1st **DMG Work-Come**
 December 28th **PRATSE & WORSHIP** (SPM - 7:30PM) Winter break
- January 11th **YOUTH MASS** (SPM - 7:30PM)
 January 25th **PRATSE & WORSHIP** (SPM - 7:30PM)
- February 1st **YOUTH MASS** (SPM - 7:30PM)
 February 8th **SUPER BOWL night** meet at St Clement at SPM
 February 22nd **PASTORATE MISSION** (6:30PM - 8PM)
- March 21st **FOOD DRIVE** Join us for a door-to-door Food Drive.
 March 22nd **PRATSE & WORSHIP** (SPM - 7:30PM)
- April 3rd **GOOD FRIDAY PASSION PLAY** Meet at SPN
 April 12th **YOUTH MASS** (SPM - 7:30PM)
 April 18th **PIZZA NIGHT** Join us at SPN to make and enjoy some real pizza
 April 26th **PRATSE & WORSHIP** (SPM - 7:30PM)
- May 5th **YOUTH MASS** (SPM - 7:30PM) mother day
 May 9th **SPRING YARD SALE & CAR WASH** Meet at SPN at 7 AM
 May 24th **PRATSE & WORSHIP** (SPM - 7:30PM)
 May XXth **Baseball game**

YOUTH MINISTRY

EDGE YOUTH PROGRAM

*Faith Formation, Youth Mass, Praise & Worship,
 Community Service and Fun Social Nights*



Sign up here



**Sunday's evenings
 For 5 to 8 grades**

At St. Philip Neri Church



Outreach Immediate Needs

- Bottle water case
- Granola Bars
- Beef Ravioli
- Chicken cans
- Cookies Snack pack
- Yoga Mats (Used or New)
- Camping tents

Please Mark all items (Outreach)

Outreach Ministry

We ask people not to donate dirty clothes or clothes with blood. Clothes that are not clean are a health hazard and we have no option but to throw them away in the trash.

Please understand your donations go straight to the homeless in need of essential items like clothing and more.

Thank you

St. Clement I & St. Philip Neri Pastorate Children & Youth Ministries

Sunday Faith Formation

- Grades Kindergarten - 4th
- 10:45-11:45 in St. Philip Neri School
- Late September - early May
- Fee: \$80 per family (includes sibling in grades 5-8 in EDGE)
- Contact Laura Graham: lgraham@spnmd.org



First Confession & First Holy Communion Preparation

- For pastorate children in public school & St. Philip Neri School
- Children in grades 2 - 5
- Fee: \$40 per child
- First Confession prep, Wednesday evenings/Saturday mornings in October
- First Holy Communion preparation, Wednesday/Saturday in March & April
- Contact Laura Graham: lgraham@spnmd.org



Order of Christian Initiation for Youth (OCIFY)

- Youth in grades 6-12 who have not been baptized or received Holy Eucharist
- Grades 6-8: Friday, 7:00-8:00, beginning Sept. 19
- Grades 9-12: Monday, 7:00-8:00, beginning Sept. 22
- Location: Parish Center Meeting Rooms
- Fee: \$30 per person
- Contact Laura Graham, lgraham@spnmd.org



Youth Formation & Ministry - EDGE



- Grades 5-8
- 1st & 3rd Sundays - 6:30-7:45, SPN School
- 2nd & 4th Sundays - 5:00 Youth Mass/Eucharistic Adoration, followed by meal & ministry
- Fee: \$80 (for youth who have no sibling in Faith Formation)
- Contact Matteo, matteo.santi-amantini@archbalt.org

CONFIRMATION



- Grades 9-12, in the Parish Center meeting room
- 2nd & 4th Sundays - 5:00 Youth Mass/Eucharistic Adoration, followed by meal & Confirmation preparation
- Fee: \$150
- Contact: Abby Kane, aKane@spnmd.org

PARISH EVENTS AND INFORMATION

<http://www.stclementandstphilipneripastorate.org/>



SPN PARISH MASS SCHEDULE

WEEKEND MASSES

Saturday Mass at 5 PM

Sunday Masses at 8:00 AM, 9:30 AM, and 11:30 AM

DAILY MASS

Thursday at 9:00 AM

Mon, Tues, Wed, Fri at 6:30 PM

Celebrate the Opening of Our
Perpetual Adoration Chapel



*"Be Awakened to
Relationship"*

*Experience the profound beauty of
adoration. Families welcome!*

*Flexible days & times
that fit your schedule.
Scan QR code to sign up.*

CONFIRMATION CLASSES will begin in the fall. For more information, contact Abbey Kane at akane@spn-sc.org.

O.C.I.A. CLASSES If you are interested in joining the Catholic Church, please attend these classes on Tuesday evenings starting with Mass at 6:30 PM. For more information, please contact Deacon Mark Rachid at mark.rachid@archbalt.org.

SPN's MOM'S GROUP meets 2nd Monday of the Month at 7:30 PM. For more information, contact Elizabeth at eadalasio@gmail.com.

CATHOLIC WOMEN'S BIBLE STUDY is called "Walking with Purpose" meets 2nd and 4th Sundays from 6-7:15 pm and every Wednesday from 9:30-11 AM and 7:15-8:45 PM. For more information, contact Theresa at theresaewaggoner@gmail.com.

CANA FOX "The Voice of Marriage" is a movement that supports parents in navigating the confusing landscape of new ideas about the human person, sexuality and marriage. The group meets the 3rd Sundays of the month at 6:30 PM in Room 7A. Visit www.canvox.com for more information. Contact Laura Graham at lgraham@spn-sc.org with any questions.

GIRL SCOUTS - Meets Mondays from 6:00-7:15 PM. For more information, please contact Maryann Kulesz at rakak@aol.com.

NEED MORE INFORMATION ABOUT SPN?

Contact SPN Business Manager, Kathy Nangle, at knangle@spn-sc.org.

St. Philip Neri School - Spirit Nights 2025-2026



Italia's Corner Cafe
 Burwood Village Center
 7089 Baltimore Annapolis
 Blvd., Suite F
 Glen Burnie, MD 21061

1st Thursday of the month
4:00 pm - 8:30 pm

- Thurs., Sept. 4
- Thurs., Oct. 2
- Thurs., Nov. 6
- Thurs., Dec. 4
- ~~Thurs., Jan. 4~~
- Thurs., Feb. 5
- Thurs., Mar. 5
- Thurs., Apr. 2
- Thurs., May 7
- Thurs., June 4
- Thurs., July 2
- Thurs., Aug 6

Please mention SPN when you order for dine-in or carry-out. The Italia's Corner cashier will put all receipts in a basket; SPN will earn 10% back on the total.



Primanti Bros.
 Restaurant & Bar
 996 Corporate Boulevard
 Linthicum, MD 21090

All Day Long
11:00 am - 11:00 pm

~~Wed., Oct. 15~~
~~Wed., Apr. 29~~

SPN earns 20% back when you use the code **DINE2DONATE** for online orders or by showing the [FLYER](#) in the restaurant.



Bubba's 33
 7305 Ritchie Highway
 Glen Burnie, MD 21061

All Day Long
11:00 am - 11:00 pm

~~Mon., Aug 25~~
~~Tues., Dec 9~~
~~Tues., Feb 17~~
~~Wed., June 10~~

Show the [fundraiser flyer](#) to your server or mention the fundraiser. SPN will earn 10% back on the food sales. Good for dine-in or carry-out



Chick-fil-A
 Centre at Glen Burnie
 6709 Ritchie Highway
 Glen Burnie, MD 21061

4:00 pm - 8:00 pm

~~Mon., Sept. 8~~
~~Mon., Nov. 10~~
~~Mon., Jan. 12~~
~~Mon., Apr. 13~~

Mention our school to the cashier inside or at the drive-thru to earn 15% of the total for SPN. Mobile orders do not count toward the fundraiser.



Panera Bread
 1451 W Nursery Road
 Linthicum, MD 21090

4:00 pm - 8:00 pm

~~Mon., Oct 27~~
~~Mon., Mar 23~~

ORDER ONLINE FOR PICKUP USING CODE **FUND4U**

OR SHOW THE FLYER IN THE RESTAURANT for SPN to earn 20% of your order total.



Panda Express
 6620-A Ritchie Hwy,
 Glen Burnie, MD 21061

All Day Long
9:30 am - 11:30 pm

~~Fri., Dec 19~~
 code 3843416

~~Fri., Feb 13~~
 code 3844956

~~Thurs., May 21~~
~~Fri., May 29~~
 code 3853280

Order online and enter the fundraiser code listed above OR show the flyer in the restaurant for SPN to earn 20% of your order total.

ST. PHILIP NERI TUITION RAFFLE

Supporting the SPN H.S.A.



..... Top Prize

ONE FULL YEAR OF TUITION*
VALUED @ \$7,375

.....
Or \$2,500 Cash Option

Ticket Price:

\$25

3 for \$60 | 5 for \$100

Drawing Date:

June 2026

@ St. Philip Neri School

ORDER TICKETS ONLINE @

>>> forms.diamondmindinc.com/stphilipneri/HSATuition <<<

For more information, please email SPNHSAMD@gmail.com.

*Minimum of 400 tickets must be sold to award the St. Philip Neri Tuition prize, or top prize reverts to \$2,500 cash option. Tuition prize is transferrable and must be redeemed during the 2026/2027 school year. Winner is responsible for all taxes, please consult a tax professional.

Sponsor & Proud Supporter:

TOMAS BROTHERS
Home Improvement

TomasBrothers.com