



2025-2026 School Year



Official PBIS Silver School & 2024 Kindness Certified School
2021-2024 Top Work Places – 4 years in a row

Social Media

Facebook:

St. Philip Neri Catholic School

Instagram: [Spnjesters](#)

Tik Tok:

[stphilipnerimdjesters](#)

NOVEMBER 2025

INFORMATIONAL FLYERS INCLUDED IN THIS NEWSLETTER:

SCHOOL EVENTS – November Calendar, November Lunch Menu, HSA Tuition Raffle Flyer, Fall Festival Flyer and Order Form, Santa's Secret Workshop Volunteer Form, PBIS Badges, and HSA SPIRIT NIGHTS at restaurants

PARISH EVENTS – O.C.I.A. Classes, SPN Mom's Group, Confirmation Classes, Mom's Support Group, Youth Ministry, Girl Scouts, and Cana Vox (Marriage)

HOUSE EVENT – HOPE For All Ministry Children's Clothing Drive

Looking Ahead

- | | |
|--------------|--|
| November 1 | Winter Uniforms start |
| November 3-7 | HOPE For All Children's Clothing Drive (House Service Project) |
| November 4 | Bake Sale - Grades 6 and 7 |
| November 4 | Used Uniform Exchange from 3-5 PM |
| November 6 | School Mass for all Grades at 9 AM |
| November 6 | Spirit Night at Italia's Corner Cafe from 4:00-8:30 PM |
| November 7 | SPN Jesters Running Club from 3-4:15 PM |
| November 9 | SPN Youth Mass at 5 PM followed by Life Teen/Edge Youth Ministry |
| November 10 | Spirit Night at Chick-fil-A from 4-8 PM |
| November 11 | OPEN HOUSE from 9-11 AM for prospective families |
| November 12 | Out of Uniform - Home and School Association (Day 2 of 3) |
| November 12 | Makeup for Absentees/Retake Individual Pictures |
| November 13 | School Mass for all Grades at 9 AM |
| November 14 | Asynchronous Learning Day for Students |
| November 16 | STEM Family Fun Day for PreK to Grade 12 at Notre Dame MD University |
| November 19 | High School Placement Test for Grade 8 students on-site |
| November 20 | School Mass for all Grades at 9 AM |
| November 20 | Fall Festival set-up |
| November 21 | FALL FESTIVAL (no hot lunch / spirit wear day) |
| November 21 | SPN Jesters Running Club from 3-4:15 PM |

November 23	Praise & Worship at 5 PM followed by Life Teen/Edge Youth Ministry
November 25	Wear Your House Colors - Activity Day
November 26	NO SCHOOL
November 26	SPN Youth Ministry Thanksgiving Service Day
November 27	NO SCHOOL - Happy Thanksgiving
November 28	NO SCHOOL
November 30	Advent Begins

St. Philip Neri School 410-859-1212 office@spnmd.org spnmd.org

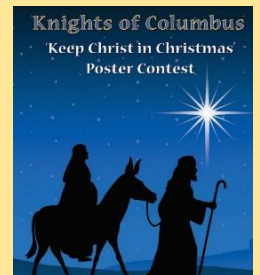
Mission Statement:

St. Philip Neri School is dedicated to fostering Catholic faith and academic excellence. Under the guidance of the Holy Spirit, students are provided the opportunity to develop their gifts and talents while striving to become active members of their church. A foundation for future success and life-long learning is provided in partnership with the family, parish and school community.

The SPN Knights of Columbus is hosting the annual
KEEP CHRIST IN CHRISTMAS POSTER CONTEST
 POSTERS ARE DUE DECEMBER 10

Information about this contest is on page 13 with
 contest entries forms on our website at

<https://spnmd.org/resources/>



Glass Containers and Water Bottles - NOT Permitted

As a reminder, students are NOT permitted to bring glass lunch containers, other glass containers or glass water bottles to school. We have had multiple instances this year with glass containers being dropped and shattering!

HOME AND SCHOOL ASSOCIATION NEWS

NOVEMBER 12 - Out-of-Uniform Day (Day 2 of 3)

<https://forms.diamondmindinc.com/stphilipneri/hsaout-of-uniform>

GET YOUR HSA TUITION RAFFLE TICKETS TODAY!

Win a year of FREE tuition for the 2026-2027 school year OR \$2500 in cash!

Ticket Price is 1 for \$25, 3 for \$60, or 5 for \$100.

Drawing date will be May 2026.

Flyer is on the last page of this newsletter. To purchase tickets online, please visit:

<https://forms.diamondmindinc.com/stphilipneri/hsatuition>

For general information on HSA-Sponsored events, activities, and committees visit:

<https://spnmd.org/home-school-association/>

For questions about any HSA activity, please send an email to SPNHSAAMD@gmail.com.

NOVEMBER 1

WINTER UNIFORM BEGINS

It's time to put those summer uniforms away! Beginning November 1 all students are to be in WINTER UNIFORMS. Students will wear the winter uniform from November 1 through March 31, at which time they will switch back to the summer uniform. Each grade level's uniform requirements are listed in the Parent-Student Handbook on pages 73-76. Information is listed below.

Pre-K Student's Uniform - Boys and Girls

Light gray gym Tee Shirt with SPN logo. Light gray sweatshirt with SPN logo. Black sweatpants with white SPN logo. White Crew Socks. Athletic Shoes (no lights or wheels).

GIRLS UNIFORM (Grades K-5)

White polo shirt with SPN Logo
Box Pleat bib-style jumper (no shorter than 1" above the knee, front and back)
White or Navy Crew Socks or
White or Navy Knee Socks or
White or Navy Tights (no logos or designs)
Tan Buck school shoes with red soles - OR - Merrell Jungle Moc Nubuck (nubuck color only). These non-scuff shoes may be purchased at Flynn & O'Hara as well as other shoe vendors. These are the only permissible school shoes.
Gray crew, v-neck pullover or Cardigan sweater with SPN Monogram

BOYS UNIFORM (Grades K-5)

White polo shirt with SPN Logo
Navy Uniform trousers (no jeans/corduroys)
White or Navy Crew Socks (no logos or designs)
Tan Buck school shoes with red soles - OR - Merrell Jungle Moc Nubuck (nubuck color only). These non-scuff shoes may be purchased at Flynn & O'Hara as well as other shoe vendors. These are the only permissible school shoes.
Gray crew, v-neck pullover or Cardigan sweater with SPN Monogram
Solid brown or black belt (must be worn with pants that have belt loops)

GIRLS UNIFORM (Grades 6-8)

Blue polo shirt with SPN Logo
Box Pleat skirt (no shorter than 1" above the knee, front and back)
White or Navy Crew Socks or
White or Navy Knee Socks or
White or Navy Tights (no logos or designs)
Tan Buck school shoes with red soles - OR - Merrell Jungle Moc Nubuck (nubuck color only). These non-scuff shoes may be purchased at Flynn & O'Hara as well as other shoe vendors. These are the only permissible school shoes.
Gray crew, v-neck pullover or Cardigan sweater with SPN Monogram

BOYS UNIFORM (Grades 6-8)

Blue polo shirt with SPN Logo
Navy Uniform trousers (no jeans/corduroys)
White or Navy Crew Socks (no logos or designs)
Tan Buck school shoes with red soles - OR - Merrell Jungle Moc Nubuck (nubuck color only). These non-scuff shoes may be purchased at Flynn & O'Hara as well as other shoe vendors. These are the only permissible school shoes.
Gray crew, v-neck pullover or Cardigan sweater with SPN Monogram
Solid brown or black belt (must be worn with pants that have belt loops)

Gym Uniform - Boys and Girls (Grades K-8)

Light gray gym Tee Shirt with SPN logo. Light gray sweatshirt with SPN logo. Black sweatpants with white SPN logo. White Crew Socks. Athletic Shoes (no lights or wheels).

NOVEMBER 3-7

HOPE For All Children's Clothing Drive
Donations due by Friday, November 7.
Read about this drive on Page 13 and 25.



NOVEMBER 4

6th and 7th GRADES BAKE SALE

Students can purchase tasty treats!
Proceeds benefit our Middle School programs!



USED UNIFORM EXCHANGE 3-5 PM in the Basement

We realize the cost of uniforms can really add up! We offer this program to exchange gently used clothes to help out our families. If you have any questions about this program, please contact Holly at spnuseduniforms@gmail.com.

ST. PHILIP NERI USED UNIFORM EXCHANGE

**3-5 PM DROP OFFS AND SALES
FIRST TUESDAY OF THE MONTH
SPN BASEMENT NEXT TO MUSIC ROOM**

PLEASE USE THE FRONT DOORS OF THE SCHOOL TO ENTER.
THE USED UNIFORM EXCHANGE IS ON THE BASEMENT LEVEL OF THE SCHOOL.

AS WE ARE IN SHORT SUPPLY OF POPULAR ITEMS,
YOU MAY WANT TO EMAIL FIRST TO SEE IF WE HAVE
WHAT YOU ARE LOOKING FOR!

EMAIL US:

spnuseduniforms@gmail.com

Used Uniform Dates
10/7
11/4
12/2
1/6
2/3
3/3
5/5
6/2

HOPE TO SEE YOU SOON!

NOVEMBER 6

SCHOOL MASS at 9 AM

All grades will be present.
All are welcome to attend!

SPIRIT NIGHT AT ITALIA'S CORNER FROM 4-8:30 PM

Please mention SPN when you order for dine-in or carry-out. SPN will earn 10% back on the total. Please share with family and friends!



SPN Spirit Night at Italia's Corner



1st Thursday of the Month
4:00-8:30 PM
7089 B&A Blvd.
Glen Burnie, MD 21061

Please mention SPN when you order for dine-in or carry-out. The Italia's Corner cashier will put all receipts in a basket. SPN will earn 10% back on the total!

November 7

SPN Jesters Running Club
from 3:00-4:15 PM

Have fun running, ladies!

SPN JESTERS RUNNING
CLUB

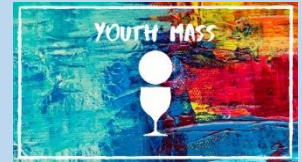


GIRLS GRADES 3-8

November 9

SPN Youth Mass at 5 PM followed
by Life Teen/Edge Youth Ministry

More information about this Youth Ministry program,
Please see more information on page 22.



November 10

SPIRIT NIGHT AT
CHICK-FIL-A

Mention SPN when placing your order for
us to receive 15% of the total for SPN.

Only at the Centre of Glen Burnie
location. Sponsored by the Home and
School Association!

Spirit Night at Chick-fil-A
from 4:00-8:00 PM



Sept. 8
Nov. 10
Jan. 12
Apr. 13

Mention our school to the cashier inside or at the
drive-thru to earn 15% of the total for SPN.

Mobile orders do not count toward the fundraiser.

Centre at Glen Burnie 6709 Ritchie Highway Glen Burnie, MD 21061



SPN Jesters School Store



- Color Pencils \$1.25
- Crayons \$1.25
- Dry Erase Markers \$.50
- Erasable Pens \$1.00
- Erasers (Pencil toppers) 3 for \$.25
- Erasers (big) \$.50
- Folders \$1.50
- Gel Pens \$1.00
- Highlighters \$1.00
- Index Cards \$.75
- Pencils \$.25
- Pencil Cases (plain) \$1.00
- Pencil Cases (animal) \$2.00
- Pencil Grips 2 for \$.25
- Markers \$1.00
- Mechanical Pencils \$.50
- Mini Notebooks \$.75
- Notebooks \$1.50
- Scissors \$.75
- Specialty Pens \$1.00

House Bracelets \$1.00

SCHOOL STORE

November 11

OPEN HOUSE for Prospective Students

If you know of a family looking for a good Catholic school in the area, please spread the word about our Open House! Families will have a chance to tour the School with our student and parent ambassadors.

If they have any questions, please refer them to Ms. Amy Sewell at asewell@spnmd.org!



ST. PHILIP NERI SCHOOL

Nourishing the Soul, Mind, and Body

Open House Dates

November 11, 2025
January 27, 2026
9am-11am

**TAKE A
TOUR!** Join us !!

6401 S. Orchard Road Linthicum, MD 21090
www.spnmd.org
Email Amy Sewell, Admissions Director,
for more information at asewell@spnmd.org



NOVEMBER 12

HSA OUT-OF-UNIFORM DAY

The HSA is sponsoring three out-of-uniform days with proceeds going towards HSA-sponsored events. The cost is \$10 for all three days paid in advance or \$5 each day of. See Flyer on Page 11. Dates are: October 24 (past), November 12, and December 3. ONLINE PAYMENT LINK:

<https://forms.diamondmindinc.com/stphilipneri/hsaout-of-uniform>

PICTURE MAKEUP DAY

This picture day is reserved for those students absent on our previous individual picture day or for families that would like a retake of their child's picture. This is NOT for everyone!



HOME AND SCHOOL ASSOCIATION

FALL OUT OF UNIFORM DATES

Friday, October 24	Wednesday, November 12	Wednesday, December 3
-----------------------	---------------------------	--------------------------

ONLINE OUT OF UNIFORM LINK:

<https://forms.diamondmindinc.com/stphilipneri/hsaout-of-uniform>

[HTTPS://SPNMD.ORG/HOME-SCHOOL-ASSOCIATION/](https://SPNMD.ORG/HOME-SCHOOL-ASSOCIATION/)

November 13

SCHOOL MASS at 9 AM

All grades will be present.
All are welcome to attend!



November 14

Asynchronous Learning Day for Students

There are 2 asynchronous days. These are days students will be working from home. They are $\frac{1}{2}$ days for students. These days are November 14, 2025 and February 27, 2026. During this time, students will be responsible for completion of work posted in Google Classroom or sent home by the teacher, so that teachers will be given the time to input final grades for the trimester.



November 16

STEM Family Fun Day from 9 AM to NOON

Please join in the fun at this fun day presented by the Maryland Festival at Notre Dame of Maryland University. This day is geared to families with students in PreK to Grade 12. Registration is required. See flyer on page 24.



November 19

HIGH SCHOOL PLACEMENT TEST FOR OUR 8th GRADE STUDENTS

This test will be given on-site!



November 20

SCHOOL MASS at 9 AM

All grades will be present.
All are welcome to attend!



November 20

FALL FESTIVAL SETUP

Our Fall Festival committee and parent volunteers will transform our parish hall (gym) into a room full of games! They will start this transformation right after school to be ready for a fun-filled FALL FESTIVAL on Friday! For more information about our Fall Festival, please contact Mrs. Rachel Bruggy at rbruggy@spnmd.org.



November 21

It's Fall Festival time!

We are very excited to host our traditional Fall Festival. The students will visit the SPN gym and have an opportunity to play games and win prizes. The **FIRM** deadline for lunch and ticket orders is **THURSDAY, NOVEMBER 13**. See pages 18 and 19 for more Fall Festival information and order form! Online order form is listed below. Tickets will also be available on Fall Festival Day!



<https://forms.diamondmindinc.com/stphilipneri/fallfestival>

SPIRIT WEAR DAY

Get into our SPN spirit by wearing your SPN spirit wear! Students will be allowed to wear the SPN spirit shirt with their SPN gym pants!



NO LUNCH SERVED TODAY

Due to the Fall Festival, no lunch will be served today by our lunch ladies! Students may bring in their lunch or place a Papa John lunch order from the Fall Festival! This order must be pre-ordered by Thursday, November 13.

No purchasing the day of the Fall Festival!



GIRLS RUNNING CLUB

Another day training from 3:00-4:15 PM. For more information, contact Ms. Amy at asewell@spnmd.org.



November 23

Praise and Worship at 5 PM followed by Life Teen/Edge Youth Ministry

Enjoy the praising sounds of our SPN Parish Music Ministry to help heal your soul. Life Teen and Middle School Edge programs will follow. More information about this Youth Ministry program on page 22.



November 25

HOUSE COLOR DAY

Students can wear a shirt in their HOUSE COLOR with the SPN gym sweatpants! A House Activity is planned!



November 26

NO SCHOOL

Enjoy your extra-long Thanksgiving Weekend!

SPN Youth Ministry Thanksgiving Service Day

The Youth Ministry has a special service project planned →

For more information, contact Matteo Santi-Amantini at 443-831-1127 or email him at Matteo.Santi-Amantini@archbalt.org.

St Philip Neri & St Clement YOUTH MINISTRY

Thanksgiving Service Day

Let's Share & Care

Come and join us to help the needy and have some fun

Wednesday, November 26

2 PM - Meet at SPN parking lot
(6405 S Orchard Rd, Linthicum Heights, MD 21090)

All we will earn in pay goes to support the missions of Operation Mato Grosso in South America!

for more info
Genevieve 443-422-8063
Matteo 443-831-1127
Summer 667-231-8065



OMG.SOUTHWEST

**November
27 and 28**
NO SCHOOL
HAPPY THANKSGIVING!



thanksgiving prayer

Thank You, God, for this day of thanksgiving. I am grateful for a day dedicated to gratitude, appreciation, and abundance. Thank you for a table set with food, good people to share it with, and love of You, the divine provider. As I extend thanks, I am reminded of how difficult it is for those less fortunate to enjoy this holiday. Please, bless them with plenty and watch over us all.



November 30
ADVENT BEGINS

PRAYER FOR ADVENT
"PRAYER FOR A HOLY ADVENT"

Lord, another year has passed, and it is time for us to take stock of our spiritual strengths and weaknesses, our faith and where we lacked it, the times we loved You fully, and the times we lacked that focus and dependence on You. Advent is a double expectation. While we are preparing to commemorate Your Blessed Incarnation so many years ago, we are, with Saint John the Baptist, also preparing for when You come again. We ask You, sanctify this Advent so that by Christmas, You may find us more worthy of Your mercy and Your love. Amen.



Entry Forms for this Knights of Columbus Poster Contest is on our PARENTS web page on our website! →

Knights of Columbus
Keep Christ in Christmas
Poster Contest

Due: by December 10, 2025

Sponsor: St. Philip Neri Council # 14612

Contact: GK Dan Young danyoung1120@yahoo.com

Faith in Action Family

Keep Christ in Christmas
Poster Judging Fact Sheet

RULES

Poster must reflect the theme of *Keep Christ in Christmas*.

Each poster should be the original work (including concept, layout, slogan and any visual images) of a single person.

Poster should be approximately 11x17 inches in size. If pastels, chalk or charcoal are used, the poster must be laminated or covered with clear plastic. Posters may be in color or black and white.

Each poster must be submitted with a Knights of Columbus "Keep Christ in Christmas" Poster Contest entry form.

The name and grade of the person entering the poster should be included on the back of the poster.

All entries become the property of the Knights of Columbus Supreme Council. **Posters will not be returned.**

JUDGING

Judging should be done by teams composed of students, Knights, teachers, administrators, Chaplin, Pastor, etc. In keeping with the theme of giving young people the opportunity to develop their own feeling towards Christmas and our savior Jesus Christ, young people should be included in all phases of the judging process.

A **100 point scoring system** will be used to determine the winner.

30 Points: Slogan — How clearly is the theme presented?

30 Points: Visuals — How well do the visuals convey the message?

40 Points: Overall impact — How effective was the poster in capturing your attention and causing you to reflect on the topic?

Council's Contact Information
St. Philip Neri Council # 14612
GK Dan Young danyoung1120@yahoo.com



TUITION ASSISTANCE RAFFLE WINNERS

SEPTEMBER 2025

9/01	Virginia Neubeck	\$100
9/03	Donna Pirog	\$50
9/07	Maggie Schillenberg	\$100
9/10	Anne Smith	\$100
9/10	Joan Edmondson	\$100
9/12	Connie Claffy	\$50
9/14	Dolores Hebstreit	\$100
9/14	Maryann Kulesz	\$100
9/16	Dolores Hebstreit	\$100
9/16	Maryann Kulesz	\$100
9/22	Earl Maisel	\$100
9/22	Peggy Gervinski	\$100
9/23	Jim Stevens	\$100
9/25	Mary Howard	\$100
9/26	Barbara Garber	\$100



WE ARE LOOKING FOR BUYERS AND SELLERS!

Tickets are sold every month for \$5/ticket. The ticket is good for the entire month, so you have 30-31 days/chances to win either \$100 or \$50! We have two sets of numbers (000-999) so there could be two winners each day!

To get your tickets, or if you need more information, please contact Mrs. Katie Spielman at 410-859-1212 or email her at kspielman@spnmd.org.



St. Philip Neri School Fan Shop is Open!



SHORT SLEEVE,
LONG SLEEVE,
HOODIES AND
MORE



UNIFORM APPROVED ITEMS



FAMILY SPIRITWEAR
CLASS HOUSE
COLOR SHIRTS



FOLLOW THE QR CODE OR LINK TO
CHECK OUT THE ONLINE SHOP
AND ORDER TODAY!



CRAB & ANCHOR
CUSTOM APPAREL

CrabandAnchorApparel.com



Get your spirit wear today!



HSA SPN Out of Uniform Days

The SPN Home & School Association is sponsoring three out-of-uniform days with proceeds going toward HSA-sponsored events

The cost is \$10 for all three days, paid in advance through the link provided, or \$5 if paid separately.

Fall dates are:

Friday, October 24th

Wednesday, November 12th

Wednesday, December 3rd

[Out-of -Uniform Payment](#)





Our school was recognized for excellence in PBIS (Positive Behavioral Interventions and Supports)—celebrating our commitment to teamwork, the power of teaching and instruction, restorative relationships, community connections,



and the strong partnership between our classrooms and our community. Together, we continue to build a joyful, faith-filled environment where every student can learn, grow, and thrive!



We love our Mrs. Katie and Mrs. Rachel in our front office!



← Hi! My name is Kayla Feely, and I am a first year Pre-K Aide! I am from Pasadena, Maryland and attended West Virginia University where I studied Childhood Development and Family Studies. I enjoy going on walks, the beach, and traveling in my free time. I am so excited to be a part of the St. Philip Neri community and can't wait to see what this year will bring!



House Colors, One Family in Faith!

Our entire school gathered in a beautiful "Prayer Circle," dressed in our house colors to celebrate unity, friendship, and prayer. What a wonderful reminder that, though we wear different colors, we are all part of one body in Christ.

Dear Saint Philip Neri Families,

As a school community, our Houses are coming together as one to support **HOPE for All** in their mission to provide clothing for children in need across Anne Arundel County. This outreach effort gives our students a tangible way to live out our faith through service and compassion.

Last year, HOPE provided clothing to **over 2,300 people**, a **26% increase** from the previous year. Meeting the growing demand has been a challenge, and they are especially in need of **children's clothing for school-aged boys and girls**.

We are collecting:

- Pants and jeans
- Long- and short-sleeve shirts
- Shorts
- Sweatshirts and sweatpants
- Washable winter coats and jackets

Please note:

- **No adult** clothing is needed at this time.
- No branded school uniform clothing is needed.
- Donations may be **clean, gently used** items or **new**.

Students may bring donations to school **the week of Monday, November 3**. There will be **drop-off bins in the lobby**. Let's see just how powerfully our Houses can work together to make a difference!

Thank you for helping our students live out our call to serve others with love. Together, our school family can bring warmth, dignity, and hope to children in need.

Yours in Christ,
The Faculty and Staff of St. Philip Neri School



PLEASE SEE FULL PAGE FLYER ABOUT HOPE FOR ALL ON PAGE ??.

NOTHING ABOUT ME IS SELF MADE I OWE GOD EVERYTHING

WHAT IS THE FALL FESTIVAL? (NOV 21)

The Fall Festival is a long-standing tradition at SPN! It has changed over the years, and currently the festival is held during the school day for the students at SPN. It is a day of fun for the students and includes carnival-style games, wheels (cake and snack), prizes, raffles, and a special lunch. The students can earn cool prizes by playing the games!

Each game requires one ticket to play. Tickets are \$0.50 for 1 ticket, \$5 for 12, and \$10 for 25 tickets. Each homeroom will be allotted a one-hour time slot to visit the Festival.

The Fall Festival is hosted by the Home and School Association. We thank the Fall Festival Committee and all of our parent volunteers who make this Festival possible!

If you need any more information, please contact Mrs. Rachel Bruggy at rbruggy@spnmd.org.



WHAT IS SANTA'S SECRET WORKSHOP? (DEC 12)

Santa's Secret Workshop is a long-standing tradition at SPN! This annual event, hosted by the Home and School Association, is a student and parent favorite! The parish hall at St. Philip Neri is transformed into a Christmas wonderland for the community and parish! Boxes filled with great gifts are delivered throughout the year for this event. Santa's Secret Workshop provides the opportunity for children to shop for nice, inexpensive gifts for their loved ones. The cost of the gifts range from \$1 to \$15 and will be wrapped by Santa's little helpers.

Students have 30 minutes to shop and 30 minutes to get their items wrapped. They also receive a special treat this day! Students should bring a list of family member's names that they want to buy presents for. If a student brings in \$20 or more, we ask them to exchange that amount for smaller bills with the HSA Treasurer to make the shopping process a little easier on our sellers.

It takes a tremendous number of volunteers to pull off this event. The hall is set up the day prior and requires many of Santa's little elves to transform the hall. On SSW day we need over 25 sellers and 25 wrappers throughout the day.

If you need any more information, please contact Mrs. Sue Wenzlick at swenzlick@spnmd.org.

SPN ENROLLMENT FOR 2026-2027 SCHOOL YEAR



REGISTRATION FEES:

October 1- December 1, 2025

The registration fee is \$100.

The fee will increase to \$200
on December 2, 2025.

Our deadline for returning families is JANUARY 1.

TIME TO SIGN UP TO RESERVE YOUR SPOT!

FINANCIAL ASSISTANCE AVAILABLE AT ST. PHILIP NERI SCHOOL FOR THE 2026-2027 SCHOOL YEAR

Financial assistance is available from several sources:

- 1) Archdiocese of Baltimore (AOB)
- 2) St. Philip Neri Parish
- 3) St. Philip Neri School
- 4) Applicant's Parish



Anyone requesting financial aid from the AOB, SPN Parish or School:

Families **must complete the FACTS Financial Aid Application** found at the link below. A **NEW** application must be submitted every year if you would like to be considered for aid. This application must be completed and all required documentation submitted **by February 28, 2026**, to be eligible for any AOB, School, or Parish assistance. The cost to complete this application is \$35. Here is the SPN direct link: <https://online.factsmgt.com/signin/3QGPN>

Log into your account or choose "New Account" to create your account and begin the application process. Questions regarding the application process can be directed to FACTS at [866-441-4637](tel:866-441-4637).

Please note that FACTS **only** process the applications. The decisions for granting or denying requests for assistance are made separately by: The Archdiocese of Baltimore, St. Philip Neri Parish, and St. Philip Neri School. These decisions are made during the March-April time frame. Applicants will receive a response before May.

**ALL TUITION ASSISTANCE AWARDS ARE CONTINGENT UPON SUBMISSION OF A COMPLETED FACTS APPLICATION AND SUBMISSION OF PROPER DOCUMENTATION.
ALL APPLICATIONS MUST HAVE A "VERIFIED" STATUS BEFORE ANY ASSISTANCE IS GRANTED.**

Anyone requesting financial aid from their parish:

Please contact your parish (other than SPN) directly and ask if they offer any financial aid.

St. Philip Neri School Lunch Menu

November 2025

Monday	Tuesday	Wednesday	Thursday	Friday
3 Toasted Cheese Sandwich Tomato Soup w/Milk Fruit Milk <i>National Sandwich Day</i>	4 Chicken & Cheese Quesadilla Side Salad Fruit Milk	5 Cheeseburger Fritos Fruit Milk	6 Taco In A Bag Corn Fruit Milk <i>National Nachos Day</i>	7 Cheese Pizza Carrots & Cucumbers w/Ranch Dip Fruit Milk
10 Chicken Patty Sandwich Corn Fruit Milk	11 Spaghetti with Meatballs Green Beans Fruit Milk	12 Cheese Pizza BBQ or Plain Chips Fruit Milk	13 Corn Dogs Baked Beans Fruit Milk	14 <i>Asynchronous Day</i>
17 Chicken Nuggets Green Beans Fruit Milk	18 Meatballs in Brown Gravy Mashed Potatoes with Gravy Fruit Milk	19 Fish Sticks Corn Fruit Milk	20 Hot Dogs Chips Fruit Milk	21 <i>Fall Festival No School Lunch Served</i>
24 Boneless Chicken Wings Green Beans Fruit Milk	25 Pulled Pork Sandwich Potato Chips Apple Milk	26 <i>School Closed</i>	27 <i>School Closed</i>	28 <i>School Closed</i>

A variety of fresh fruit and vegetables are served daily.

Milk offering is 1% white milk and NF flavored milk.

There will be a 'B' lunch option available every day that lunch is served. It will be served with the side lunch items of the day.

A Lunch - Main Entree B Lunch - Hot Dog Entree

Menu Subject to Change Without Notice



LUNCH ACCOUNTS

Lunch charges will be posted to your FACTS PrePay Lunch accounts at the end of each week.

IMPORTANT INFORMATION TO KNOW:





Lunch account balances in FACTS are by student, NOT by family. At this time, we are not able to change this account setup for this school year. Therefore, if you have multiple children and one child's lunch balance is negative but another child's lunch balance is positive, you may contact Mrs. Rachel Bruggy at rbruggy@spnmd.org throughout the school year and she can transfer the funds from one child's lunch account to another.

If you have any questions about the lunch program, please contact Nancy Reed at nreed@spnmd.org. Questions related to FACTS, please contact Rachel Bruggy at rbruggy@spnmd.org.



St. Philip Neri School November 2025



Sun	Mon	Tue	Wed	Thu	Fri	Sat
<p>**Asynchronous Learning Day for Students (Friday, November 14): There are 2 asynchronous learning days this school year. The first one is on Friday, November 14. On this day students will be working from home. This is a ½ day for students. During this time, students will be responsible for completion of work posted in Google Classroom or sent home by the teacher, so that teachers will be given the time to input final grades for the trimester.</p>					31 NO Band 12pm EARLY DISMISSAL Out of Uniform (wear Orange/Black) Halloween Parade At 10:30am	1 Winter Uniform Starts
2 Daylight Savings Time Ends (Don't forget to set your clocks back)	3 CHORUS 3-4:30pm Drama Jr. 3-4:30 House Service Project Starts (HOPE For All)	4 6th/7th Grade Bake Sale  Used Uniform Exchange 3-5pm	5 School Store 7:45am-8:05am Junior Robotics 3-4pm Hiking Club Meeting 3-4pm <i>The Little Mermaid Rehearsal 3-4:30pm</i>	6 <i>School Mass 9am (All Grades)</i> Robotics 3-4:30pm Italia's Corner Spirit Night 4-8:30pm <i>The Little Mermaid Rehearsal 3-4:30pm</i>	7 Band SPN Jesters Girl's Running Club 3-4:15pm (Grades 3-8) House Service Project Donations Due	8
9 YOUTH MASS 5:00 p.m. Life Teen/Edge Youth Ministry	10 NO CHORUS Drama Jr. 3-4:30 Chick-fil-A Spirit Night 4-8pm	11 Veteran's Day Open House 9-11am (for prospective families)	12 School Store 7:45am-8:05am INDIVIDUAL PICTURE MAKEUP DAY HSA Out of Uniform Day #2 Junior Robotics 3-4pm Hiking Club Group 1 Hike <i>The Little Mermaid Rehearsal 3-4:30pm</i>	13 <i>School Mass 9am (All Grades)</i> Robotics 3-4:30pm Fall Festival Ticket/Lunch Order Deadline <i>The Little Mermaid Rehearsal 3-4:30pm</i>	14 End of T1 Asynchronous Learning Day for Students** (students DO NOT report to school - see note at top of this calendar)	15 
16 STEM Family Fun Fair (PreK-12) at Notre Dame of MD University	17 CHORUS 3-4:30pm Drama Jr. 3-4:30 T2 Begins	18	19 School Store 7:45am-8:05am High School Placement Test (Grade 8 Only) Junior Robotics 3-4pm Hiking Club Group 2 Hike <i>The Little Mermaid Rehearsal 3-4:30pm</i>	20 <i>School Mass 9am (All Grades)</i> Robotics 3-4:30pm Fall Festival Setup <i>The Little Mermaid Rehearsal 3-4:30pm</i>	21 Band Spirit Wear Day (Spirit Wear Shirt w/ SPN gym sweatpants) FALL FESTIVAL SPN Jesters Girl's Running Club 3-4:15pm (Grades 3-8)	22
23 5pm Praise & Worship Life Teen/Edge Youth Ministry 30 1st Sunday of Advent	24 CHORUS 3-4:30pm NO Drama Jr.	25 Band (Makeup) House Color Day (wear house color w/ SPN gym sweatpants)	26 NO SCHOOL	27 NO SCHOOL 	28 NO SCHOOL	29 



SPN FALL FESTIVAL



Friday, November 21, 2025

The annual St. Philip Neri School Fall Festival is fast approaching. Each year the students enjoy games, wheels, fun and prizes. They also get to order pizza from *Papa Johns*, which must be pre-ordered online or on the attached form by **Thursday, November 13. NO EXCEPTIONS.** We must have a full count the weekend before the Fall Festival to contact *Papa Johns* to order. **We will not be able to take ticket or lunch orders after Thursday, November 13.**

The festival will be 1 day. *Papa Johns* pizza lunch will be served on Friday 11/21 to the entire school for anyone who orders.

The class schedule for attending will be as follows:

Pre-K & Kindergarten: 8:30am – 9:30am

4th & 5th Grades: 9:45am – 11:00am

1st, 2nd, & 3rd Grades: 11:15am – 12:30pm

6th, 7th, & 8th Grades: 1:00pm – 2:30pm

All students will eat lunch in their classrooms. Students may wear an SPN Spirit wear shirt/sweatshirt with SPN gym sweatpants (or spirit wear sweatpants) or the gym uniform.

Please bring a bag or backpack (labeled with the student's name) to carry their prizes and tickets.

Our two most popular wheels are the Treat Wheel and the Snack Wheel. In order for these games to be so successful, we rely on the generosity of our parents.

Treat Wheel:

This year treats can be store-bought and prepackaged OR homemade! Examples of store-bought include: Family size boxes of mini muffins, Hostess cakes, Little Debbie cakes, prepackaged cookies, cakes, etc. Families will receive **one volunteer hour for every 2 large size boxes/containers of store-bought/prepackaged treats.** Families will receive **two volunteer hours for every 1 homemade treat** (FULL size cakes/FULL batch (2 dozen) of cookies/full batch of brownies, etc. NOT separated). Please send in all store-bought treats by Thursday, November 13. Homemade treats can be brought the day before (Thurs. 11/20) or by 8am the day of the festival. Sign in at the school office to get your credit when you drop off the treats. **All treats must be labeled with your child's name, parent/guardian name and homeroom in order to get volunteer hours credit.** Please also label for the "Fall Festival" so the treats do not get mixed up with other things. The students really **LOVE** winning at this wheel. Please help make this a success! Thank you!

Snack Wheel:

We are asking that each child send in the following items to the school office by Thursday, November 13:

Pre-K and Kindergarten: Big bag of pretzels, popcorn, Cheetos, etc.

Grades 1 – 4: Big bag of chips or Doritos

Grades 5 – 8: 2-liter bottle of soda

(You do not get volunteer credit for the Snack Wheel donations, but the kids **LOVE** winning the snacks!)

Games we will be playing:

Lucky Duck	Muffin Tin Toss	Bean Bag Toss	Snack Wheel
Christmas Dice	Lollipop Tree	On Target	Sports Wheel
Ladder Golf	Football Toss	Plinko	Treat Wheel
Dartless Balloons	Toilet Toss		

Games are 1 Ticket each. Prizes will be Out-of-Uniform passes, sports items, stuffed animals, and SO much more.

TICKETS ARE TO BE PURCHASED BEFORE PLAYING. CASH IS NOT TAKEN AT THE GAMES.

Tickets can be pre-ordered before the Festival (see attached form or pay online) OR at the ticket table the day of the Festival.

This is a fun day for the students and the parent volunteers. **THANK YOU FOR SUPPORTING THIS HSA EVENT!!**

**Fall Festival Committee: Rachel Bruggy & Chasity Nicoli (Co-Chairs), Sandy Allred, Ashley Coleman, McKenzie Cosgrove, Jamie Gillespie, Stacy Loveridge & Amy Woytowitz
HSAfallfestival@gmail.com**

FALL FESTIVAL 2025

ORDER FORM FOR GAME TICKETS & LUNCH

All lunch **MUST** be ordered ahead of time!

(Order by **Thursday, November 13**)

FIRM DEADLINE FOR ORDERS

THANK YOU!

Order Online! We HIGHLY encourage ordering online!

<https://forms.diamondmindinc.com/stphilipneri/fallfestival>

****This form does NOT need to be returned if ordering online.**

STUDENT _____ HOMEROOM _____

I. **GAME TICKETS:** (Pre-order by Thursday, November 13)

50¢ EACH

12 FOR \$5

25 FOR \$10 (most commonly selected quantity)

Number of tickets ordered _____

Total for Tickets: \$ _____

II. **LUNCH ORDER FORM** (MUST BE PRE-ORDERED by Thursday, November 13)

Cheese pizza - \$2.00/slice _____ x \$2.00 = \$ _____

Chips - 0.50¢ _____ x \$0.50 = \$ _____

Soda/Water - \$1.00 (PLEASE READ: Soda may only be ordered for students in 6th, 7th, and 8th grades. If you order a soda for a student in PK-5, the student will receive a bottle of water instead, NOT a soda. Thank you.)

Coke _____ x \$1.00 = \$ _____

Diet Coke _____ x \$1.00 = \$ _____

Sprite _____ x \$1.00 = \$ _____

Water _____ x \$1.00 = \$ _____

Total for Lunch: \$ _____

III. **PAYMENT**

TOTAL ENCLOSED: \$ _____

(Make check payable to SPN HSA)

ALL GAME TICKET AND LUNCH ORDERS:

- **MUST BE RETURNED BY Thursday, November 13. No Exceptions!**
- **TICKETS WILL BE GIVEN OUT TO STUDENTS THE MORNING OF THE FESTIVAL.**
- *Tickets will also be available for sale at the Ticket table at the Festival*



Santa's Secret Workshop
Thursday, December 11, 8:30 AM - 3:00 PM
Friday, December 12, 8:30 AM - 5:00 PM



Next month, the parish hall will be converted into a Christmas Wonderland for our children and parish! Boxes filled with great gifts for our children to purchase have been coming in daily! Santa's Secret Workshop provides the opportunity for SPN school kids to shop for nice, inexpensive gifts for their loved ones. Each class will have time during the school day to visit the Workshop and have their items wrapped by Santa's little helpers.

We are keeping the workshop open after school from 3-5 PM on Friday, December 12, for those children who need a little more time in purchasing their gifts. We are also opening up the Workshop to the parish community.

It takes a lot of work to transform the parish hall into a Christmas Wonderland, so we need your help! Please fill out the form below, and return it to the school office to let us know that you can help out! Lunch on both days will be provided for the volunteers! Donuts and coffee will be available to volunteers on Friday morning. Any hours worked will count toward your volunteer hours at SPN. Please feel free to send me an email if you have any questions!

We are also looking for donations of Dunkin' Donut gift cards! Any \$10 cards donated will receive 1 volunteer hour! Please send in an envelope addressed to me – don't forget to place your name on the card to get the credit!

Thanks and God Bless,
 Sue Wenzlick

swenzlick@spnmd.org

Please return form below to the school office by Friday, December 5, or email Mrs. Sue Wenzlick with your information.



Santa's Secret Workshop Volunteer Form (must have volunteer certification - VIRTUS)

Name: _____ Email Address : _____

Child's Name : _____ Home Room: _____

Please check the times you can help out. Thanks in advance for your support!

Thursday, December 11 - Moving boxes and setting up the workshop

_____ Decorating, moving boxes, setting up tables (8 AM - 5 PM) Time available: _____

Friday, December 12 - Selling items, wrapping items, and clean-up crew

_____ Seller (8:00 AM to 5:00 PM) Time available: _____

_____ Wrapper (8:00 AM to 5:00 PM) Time available: _____

_____ Clean-up Crew (4:00 PM -6:00 PM) Time available: _____

Crab Cake Carryout



Sponsored by

**Knights of
Columbus®**

St. Philip Neri Council 14612
Linthicum Heights, Maryland

Saturday November 15, 2025 4:00PM – 7:00 PM

St. Philip Neri - Mgrs. Zorbach Hall

Pick-up from 4:00PM – 7:00PM

\$20 Per Platter/Ticket

Curbside Pickup During Designated Time Slot

A Platter consists of:

**One Crab Cake, Cole Slaw,
Utz Chips and a Potato Roll for \$20**

The Knights of Columbus Council 14612 greatly appreciates your support of our Crab Cake Dinner.
The proceeds go directly back to support our parish and activities at SPN.

<https://givebutter.com/fSrx5Q>

The deadline for ordering is 11/11/25 11:00PM Platters can be picked up outside of Mgrs.
Zorbach Hall. For additional information please contact Barry Catterton at barrycatterton@aol.com.



Outreach Thanksgiving Donations

**Thank you
JESUS**
In all things, give thanks!

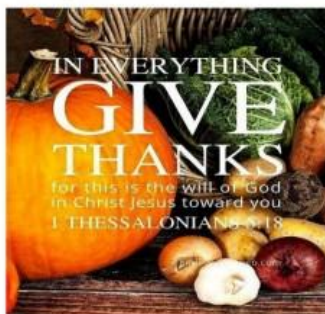
Thanksgiving is less than a month away

Which means we need your help again!

St. Philip Neri is gearing up to make our

Thanksgiving baskets for our food pantry.

We are collecting \$15-\$20 gift cards for turkeys.



Outreach Immediate Needs

Ravioli snack cans

Halloween candy

Peanut and jam

Fruit Cups

Granola Bars

Foil

Hot chocolate packs two large boxes

Toilet paper

Men's' pants size (30-30, 32-30, 34-30)

Disposable razors for men

Please Mark all items (Outreach)

**Know that the Lord is God, he made us, we belong to
him, we are his people, the flock he shepherds.**

Psalms 100:3



Thanksgiving Food Distribution Wishlist



Our Thanksgiving Food Distribution is scheduled for Thursday, November 20th.
We are expecting more than 120 families to come to us seeking groceries.

Please consider donating the following items in regular sizes.

Canned Corn

Macaroni & Cheese

Scalloped Potatoes

Tuna

Baked Beans

Chunky Soups (Ready to Serve)

Rice-A-Roni/Rice Sides (Chicken)

Cereal

Pancake Syrup

Jelly

Ravioli (Pop-top Cans Only)

Chewy Protein Granola Bars

Sneak Peak: We will be inviting everyone to join us in our 1st Annual SPN Turkey Trot. Help us gather all of the traditional holiday items by sponsoring a family this Thanksgiving and filling a bag with the following items:

1 box Turkey Stuffing

1 bag Idaho Mashed Potatoes

1 15 oz can of Yams

1 15 oz can of Cranberry Sauce

2 packets of Turkey Gravy

Thank you always for your generosity.

St Philip & St Clement

- 2025/26 Youth Ministry Calendar -

- September 14th **YOUTH MASS** (SPM - 7.30PM)
 September 28th **PRAYSE & WORSHIP** (SPM - 7.30PM)
- October 11th **FALL YARD SALE & CAR WASH** Meet at SPN at 7 AM
 October 12th **YOUTH MASS** (SPM - 7.30PM)
 October 26th **PRAYSE & WORSHIP** (SPM - 7.30PM)
- November 9th **YOUTH MASS** (SPM - 7.30PM)
 November 23rd **PRAYSE & WORSHIP** (SPM - 7.30PM)
 November 26th **THANKSGIVING service day**. Meet at SPN at 2 PM
- December 14th **YOUTH MASS** (SPM - 7.30PM)
 December 26th - January 1st **DMG Work-Come**
 December 28th **PRAYSE & WORSHIP** (SPM - 7.30PM) Winter break
- January 11th **YOUTH MASS** (SPM - 7.30PM)
 January 25th **PRAYSE & WORSHIP** (SPM - 7.30PM)
- February 1st **YOUTH MASS** (SPM - 7.30PM)
 February 8th **SUPER BOWL night** meet at St Clement at SPM
 February 22nd **PASTORATE MISSION** (6.30PM - 8PM)
- March 21st **FOOD DRIVE** Join us for a door-to-door Food Drive.
 March 22nd **PRAYSE & WORSHIP** (SPM - 7.30PM)
- April 5th **GOOD FRIDAY PASSION PLAY** Meet at SPN
 April 12th **YOUTH MASS** (SPM - 7.30PM)
 April 18th **PIZZA NIGHT** Join us at SPN to make and enjoy some real pizza
 April 26th **PRAYSE & WORSHIP** (SPM - 7.30PM)
- May 3rd **YOUTH MASS** (SPM - 7.30PM) mother day
 May 4th **SPRING YARD SALE & CAR WASH** Meet at SPN at 7 AM
 May 24th **PRAYSE & WORSHIP** (SPM - 7.30PM)
 May XXth **Baseball game**

St. Clement I & St. Philip Neri Pastorate Children & Youth Ministries

Sunday Faith Formation

- Grades Kindergarten - 4th
 10:45-11:45 in St. Philip Neri School
- Late September - early May
 - Fee: \$80 per family (includes sibling in grades 5-8 in EDGE)
 - Contact Laura Graham: lgraham@spnmd.org



First Confession & First Holy Communion Preparation

- For pastorate children in public school & St. Philip Neri School
- Children in grades 2 - 5
- Fee: \$40 per child
- First Confession prep, Wednesday evenings/Saturday mornings in October
- First Holy Communion preparation, Wednesday/Saturday in March & April
- Contact Laura Graham: lgraham@spnmd.org



Order of Christian Initiation for Youth (OCIIY)

- Youth in grades 6-12 who have not been baptized or received Holy Eucharist
- Grades 6-8: Friday, 7:00-8:00, beginning Sept. 19
- Grades 9-12: Monday, 7:00-8:00, beginning Sept. 22
- Location: Parish Center Meeting Rooms
- Fee: \$30 per person
- Contact Laura Graham, lgraham@spnmd.org



Youth Formation & Ministry - EDGE



- Grades 5-8
- 1st & 3rd Sundays - 6:30-7:45, SPN School
- 2nd & 4th Sundays - 5:00 Youth Mass/Eucharistic Adoration, followed by meal & ministry
- Fee: \$80 (for youth who have no sibling in Faith Formation)
- Contact Matteo, matteo.santi-amantini@archbalt.org



CONFIRMATION

- Grades 9-12, in the Parish Center meeting room
- 2nd & 4th Sundays - 5:00 Youth Mass/Eucharistic Adoration, followed by meal & Confirmation preparation
- Fee: \$150
- Contact: Abby Kane, aKane@spnmd.org

PARISH EVENTS



GIRL SCOUTS

It is not too late to register and enjoy a year of exciting activities, trips, crafts, leadership opportunities, cookie sales and camping.

Troops for all girls in grades Kindergarten through 8th grade. Get into the action and become a part of an exciting organization. Invite your friends to join you for twice the fun.

Troops meet at St. Philip Neri on Monday evenings from 6:00-7:15 PM.

For registration information and any questions, please contact Maryann Kulesz at rakak@aol.com.

**Where girls grow strong and
make the world a better place.**

YOUTH MINISTRY

EDGE YOUTH PROGRAM

*Faith Formation, Youth Mass, Praise & Worship,
Community Service and Fun Social Nights*



Sign up here



**Sunday's evenings
For 5 to 8 grades**

At St. Philip Neri Church

PARISH EVENTS AND INFORMATION

<http://www.stclementandstphilipneripastorate.org/>



SPN PARISH MASS SCHEDULE

WEEKEND MASSES

Saturday Mass at 5 PM

Sunday Masses at 8:00 AM, 9:30 AM, and 11:30 AM

DAILY MASS

Thursday at 9:00 AM

Mon, Tues, Wed, Fri at 6:30 PM

Celebrate the Opening of Our
Perpetual Adoration Chapel



***"Be Awakened to
Relationship"***

*Experience the profound beauty of
adoration. Families welcome!*

*Flexible days & times
that fit your schedule.
Scan QR code to sign up.*

CONFIRMATION CLASSES will begin in the fall. For more information, contact Abbey Kane at akane@spnmd.org.

O.C.I.A. CLASSES If you are interested in joining the Catholic Church, please attend these classes on Tuesday evenings starting with Mass at 6:30 PM. For more information, please contact Deacon Mark Rachid at mark.rachid@archbalt.org.

SPN's MOM'S GROUP meets 2nd Monday of the Month at 7:30 PM. For more information, contact Elizabeth at eadalasio@gmail.com.

CATHOLIC WOMEN'S BIBLE STUDY is called "Walking with Purpose" meets 2nd and 4th Sundays from 6-7:15 pm and every Wednesday from 9:30-11 AM and 7:15-8:45 PM. For more information, contact Theresa at theresaewaggoner@gmail.com.

CANA FOX "The Voice of Marriage" is a movement that supports parents in navigating the confusing landscape of new ideas about the human person, sexuality and marriage. The group meets the 3rd Sundays of the month at 6:30 PM in Room 7A. Visit www.canvox.com for more information. Contact Laura Graham at lgraham@spnmd.org with any questions.

GIRL SCOUTS - Meets Mondays from 6:00-7:15 PM. See flyer on Page 23 for recruitment flyer. For more information, please contact Maryann Kulesz at rakak@aol.com.



NOTRE DAME
OF MARYLAND
UNIVERSITY

1895



MARYLAND
STEM
FESTIVAL



STEM

FAMILY FUN FAIR preK-12

Sunday November 16th
9:00am-12:00pm

JOIN US!

REGISTER NOW

Location: Notre Dame of
Maryland University: 4701 N
Charles St, Baltimore, MD 21210

Time: 9:00am - 12:00pm

Cost: FREE

Audience: preK-12

**SCAN
ME!**



For more information & questions please contact Chelsea McClure (cmclure@ndm.edu)



Offering life's essentials today... to give HOPE for a self-sufficient tomorrow

HOPE For All is a Christian ministry whose mission is to provide basic furniture, household items, and clothing to people in our community who are without the financial means to meet their basic needs. We strive to offer stability to their daily lives and hope for their future.

- **Through community donations of goods, HOPE For All offers clients the essentials necessary to create a healthy home.**
- **For 21 years, we have been a unique resource in our area for those transitioning from homelessness, or just in need of a helping hand.**
- **We currently partner with about 70 nonprofits, government agencies, and churches who refer families and individuals to us for assistance.**

Our Programs

Turning Houses Into Homes

Deliver furniture and other essential items to more than 400 households each year

Head to Toe

Provide clothing to Anne Arundel County Public School children

Next Step Clothing

Provide clothing to people in crisis

Want to Donate?

- We accept donations on Tuesdays and Wednesdays from 9:30 a.m. to 3:00 p.m.
Also during Yard Sales: check website for dates
- Furniture donations can be brought to our warehouse or scheduled for pick up.
- Financial donations can be mailed or given online through our website.

Want to Volunteer?

Individuals, weekly: Tuesday through Thursday from 9:30 a.m. to noon and 12:30 to 3:00 p.m.

Groups: Saturdays from 9 a.m. to noon.

On Yard Sale Days: Check website for Saturday and Thursday dates.

Contact us to schedule

We are located at
122 Roesler Road
Glen Burnie, MD 21060

Our mailing address is:
P.O. Box 1548
Glen Burnie, MD 21060

www.hopeforallus | info@hopeforallus | 410-766-0372

St. Philip Neri School - Spirit Nights 2025-2026



Italia's Corner Cafe
 Burwood Village Center
 7089 Baltimore Annapolis
 Blvd., Suite F
 Glen Burnie, MD 21061

1st Thursday of the month
4:00 pm - 8:30 pm

- Thurs., Sept. 4
- Thurs., Oct. 2
- Thurs., Nov. 6
- Thurs., Dec. 4
- Thurs., Jan. 1
- Thurs., Feb. 5
- Thurs., Mar. 5
- Thurs., Apr. 2
- Thurs., May 7
- Thurs., June 4
- Thurs., July 2
- Thurs., Aug 6

Please mention SPN when you order for dine-in or carry-out. The Italia's Corner cashier will put all receipts in a basket; SPN will earn 10% back on the total.



Primanti Bros.
 Restaurant & Bar
 996 Corporate Boulevard
 Linthicum, MD 21090

All Day Long
11:00 am - 11:00 pm

- Wed., Oct. 15
- Wed., Apr. 29

SPN earns 20% back when you use the code **DINE2DONATE** for online orders or by showing the [FLYER](#) in the restaurant.



Chick-fil-A
 Centre at Glen Burnie
 6709 Ritchie Highway
 Glen Burnie, MD 21061

4:00 pm - 8:00 pm

- Mon., Sept. 8
- Mon., Nov. 10
- Mon., Jan. 12
- Mon., Apr. 13

Mention our school to the cashier inside or at the drive-thru to earn 15% of the total for SPN. Mobile orders do not count toward the fundraiser.



Panda Express
 6620-A Ritchie Hwy,
 Glen Burnie, MD 21061

All Day Long
9:30 am - 11:30 pm

[Fri., Dec 19](#)
 code 3843416

[Fri., Feb 13](#)
 code 3844956

Thurs., May 21
 code TBD

Order online and enter the fundraiser code listed above OR show the flyer in the restaurant for SPN to earn 20% of your order total.



Bubba's 33
 7305 Ritchie Highway
 Glen Burnie, MD 21061

All Day Long
11:00 am - 11:00 pm

- Mon., Aug 25
- Tues., Dec 9
- Tues., Feb 17
- Wed., June 10

Show the [fundraiser flyer](#) to your server or mention the fundraiser. SPN will earn 10% back on the food sales. Good for dine-in or carry-out



Panera Bread
 1451 W Nursery Road
 Linthicum, MD 21090

4:00 pm - 8:00 pm

- Mon., Oct 27
- Mon., Mar 23

ORDER ONLINE FOR PICKUP USING CODE **FUND4U**

OR SHOW THE FLYER IN THE RESTAURANT for SPN to earn 20% of your order total.

ST. PHILIP NERI TUITION RAFFLE

Supporting the SPN H.S.A.



St. Philip Neri
Nourishing the Soul, Mind & Body

..... Top Prize

ONE FULL YEAR OF TUITION*
VALUED @ \$7,375

.....
Or \$2,500 Cash Option

Ticket Price:

\$25

3 for \$60 | 5 for \$100

Drawing Date:

June 2026

@ St. Philip Neri School

ORDER TICKETS ONLINE @

>>> forms.diamondmindinc.com/stphilipneri/HSATuition <<<

For more information, please email SPNHSAMD@gmail.com.

*Minimum of 400 tickets must be sold to award the St. Philip Neri Tuition prize, or top prize reverts to \$2,500 cash option. Tuition prize is transferrable and must be redeemed during the 2026/2027 school year. Winner is responsible for all taxes, please consult a tax professional.

Sponsor & Proud Supporter:

TOMAS BROTHERS
Home Improvement

TomasBrothers.com