



# 2024-2025 School Year



Official PBIS Silver School & 2024 Kindness Certified School  
2021-2023 Top Work Places – 3 years in a row

## Social Media

Facebook:  
St. Philip Neri Catholic School  
Instagram:  
Spnjesters

## NOVEMBER 2024

### INFORMATIONAL FLYERS INCLUDED IN THIS NEWSLETTER:

**SCHOOL EVENTS** – November Calendar and Lunch Menu, HSA Tuition Raffle Flyer, Fall Festival Information, Santa’s Secret Workshop Volunteers, Penny Wars, and SPIRIT NIGHTS at restaurants  
**PARISH EVENTS** – Parents Night Out, SPN Parish Outreach Needs

- November 1, 2024 NO SCHOOL – Start of the Winter Uniforms!
- November 1, 2024 Parents Night Out Sponsored by the Girl Scouts from 6-9 PM
- November 2-3, 2024 SPN Corn Maze
- November 3, 2024 Don’t Forget to Set your Clocks Back at 2 AM
- November 4, 2024 House Penny Wars starts!
- November 5, 2024 Used Uniform Exchange from 3-5 PM
- November 6, 2024 HSA General Meeting (Virtual) at 5:30 PM
- November 7, 2024 School Mass for all Grades at 9 AM
- November 7, 2024 Spirit Night at Italia’s Corner Café from 4-8:30 PM
- November 8, 2024 HSA Out of Uniform Day (Day 2 of 3 Days)
- November 8, 2024 Brown Bag Lunches Project and HOUSE PENNY WARS end!
- November 9, 2024 OUTSIDE EVENT – Maryland Women’s Catholic Conference
- November 10, 2024 Youth Mass at 5 PM
- November 10, 2024 Fall Spirit Wear Orders are due!
- November 11, 2024 OPEN HOUSE from 9-11 AM for prospective families
- November 12, 2024 Makeup for Absentees/Retake Individual Pictures
- November 12, 2024 Spirit Night at Bubba’s 33 from 11 AM to 11 PM
- November 14, 2024 School Mass for pre-K through Grade 3 at 9 AM
- November 15, 2024 Asynchronous Learning Day for Students **(STUDENTS DO NOT REPORT TO SCHOOL)**
- November 18, 2024 Spirit Night at Chick-fil-A from 4-8 PM
- November 21, 2024 School Mass for Grades 4 through 8 at 9 AM
- November 21, 2024 Fall Festival set-up from 2:00-6:00 PM
- November 22, 2024 FALL FESTIVAL (no hot lunch / spirit wear day)
- November 27, 2024 Early Dismissal at 12:15 PM – House Color Day
- November 28, 2024 NO SCHOOL – **Happy Thanksgiving**
- November 29, 2024 NO SCHOOL



410-859-1212  
[office@spnmd.org](mailto:office@spnmd.org)  
[spnmd.org](http://spnmd.org)

**Mission Statement:**

St. Philip Neri School is dedicated to fostering Catholic faith and academic excellence. Under the guidance of the Holy Spirit, students are provided the opportunity to develop their gifts and talents while striving to become active members of their church. A foundation for future success and life-long learning is provided in partnership with the family, parish and school community.

The SPN Knights of Columbus is hosting the annual **KEEP CHRIST IN CHRISTMAS POSTER CONTEST** POSTERS ARE DUE DECEMBER 1 Information about this contest is on pages 20-21.



# November 1

## NO SCHOOL

Enjoy your long weekend!

### PARENTS NIGHT OUT FROM 6-9 PM

#### Sponsored by the Girl Scouts

You must register your child for this event. All children ages 4-12 are welcome. Includes dinner, snacks, crafts, games, and BINGO. The cost is \$10 per child per month. Pre-registration is required. Adult SPN Girl Scouts volunteers are chaperoning. Email Maryann Kulesz at [rakak@aol.com](mailto:rakak@aol.com) for registration form or questions.



# November 2 and 3

## CORN MAZE ADVENTURE

Get LOST in an 8-acre TAYLORS VERSION Corn Maze then stay and play on the farm all day! Go on a hayride, pick out a pumpkin to purchase, shoot paint ball & slingshots, climb a giant straw pyramid & tire mountain, ride the zipline, jump on the jumpad, grab food at Carnival Eats and more!

**USE CODE SPN24** when purchasing your tickets at [MDCornMaze.com](http://MDCornMaze.com) for SPN to receive 15% back!

It's St Philip Neri Days At The Maryland Corn Maze



**November 2-3, 2024**

Get LOST in an 8-Acre TAYLORS VERSION Corn Maze then stay & play on the farm all day! (go on a hayride, pick out a pumpkin to purchase, shoot paint ball & slingshots, climb a giant straw pyramid & tire mountain, ride the zipline, jump on the jumpad, grab food at Carnival Eats & more!)

USE code **SPN24** when purchasing your tickets at [MDCornMaze.com](http://MDCornMaze.com) for St. Philip Neri to receive **15% BACK!**

Join in for a day of ... **FUNDRAISING, SAVINGS & GOOD FALL FUN!** [MDCornMaze.com](http://MDCornMaze.com)

Exclusive fundraising group coupons

**SAVE \$1** on a snow cone at GIGI's Snowbarn

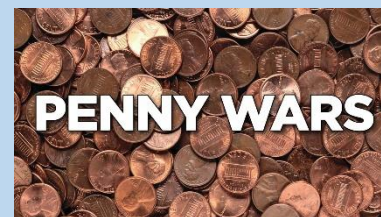
**SAVE \$1** on Chocolate covered cheesecake at Carnival Eats

**SAVE \$1** on a pumpkin at The General Store

# NOVEMBER 4

**PENNY WARS START! Ends on November 8.**

Benefits the Class of 2025! The flyer is on Page 27.



# NOVEMBER 5

**Used Uniform Exchange  
3-5 PM in the Basement**

The HSA sponsors the Used Uniform Exchange to help alleviate costs of school uniforms. We accept like new/gently used uniforms for either credit or trade. Please email Holly at [spnuseduniforms@gmail.com](mailto:spnuseduniforms@gmail.com) with specific questions about this exchange!

## ST. PHILIP NERI USED UNIFORM EXCHANGE

3-5 PM DROP OFFS AND SALES  
FIRST TUESDAY OF THE MONTH  
SPN BASEMENT NEXT TO MUSIC ROOM

PLEASE USE THE FRONT DOORS OF THE SCHOOL TO ENTER.  
THE USED UNIFORM EXCHANGE IS ON THE BASEMENT LEVEL OF THE SCHOOL.

AS WE ARE IN SHORT SUPPLY OF POPULAR ITEMS,  
YOU MAY WANT TO EMAIL FIRST TO SEE IF WE HAVE  
WHAT YOU ARE LOOKING FOR!

EMAIL US:

[spnuseduniforms@gmail.com](mailto:spnuseduniforms@gmail.com)

HOPE TO SEE YOU SOON!

Used Uniform Dates	
10/1	
11/5	
12/3	
1/7	
2/4	
3/4	
4/1	
5/6	
6/3	

# NOVEMBER 6

**Home and School Association GENERAL MEETING (VIRTUAL)  
5:30-6:30 PM**

The HSA is a very important part of our school. All families are part of the HSA. They host numerous events at our school! Many hands, make less work! Please tune in and see what events the HSA hosts and how you can help out! For more questions, please email at [SPNHSAMD@gmail.com](mailto:SPNHSAMD@gmail.com). The link to this event will come out in an ALERT message!

# NOVEMBER 7

**SCHOOL MASS AT 9 AM**

All grades will be attending this Mass.  
All are welcome!

**SPIRIT NIGHT AT  
ITALIA'S CORNER CAFÉ  
from 4:00-8:30 PM**

Enjoy a tasty meal at our local Italian restaurant!  
Don't forget to mention SPN when you place your order so we can receive some money!



### SPN Spirit Night at Italia's Corner



1st Thursday of the Month  
4:00-8:30 PM  
7089 B&A Blvd.  
Glen Burnie, MD 21061

Please mention SPN when you order for dine-in or carry-out. The Italia's Corner cashier will put all receipts in a basket. SPN will earn 10% back on the total!

# NOVEMBER 8

## Home and School Association Out of Uniform Day

The HSA is sponsoring three out-of-uniform days with proceeds going towards HSA-sponsored events.

The cost is \$10 for all three days paid in advance or \$5 each day of.

Dates are: October 23 (past), November 8, and December 3

ONLINE PAYMENT LINK:

<https://forms.diamondmindinc.com/stphilipneri/hsaout-of-uniform>



## BROWN BAG LUNCHES PROJECT

As a way of living out the Corporal Works of Mercy this school year, we will be feeding the hungry and giving drink to the thirsty through our Brown Bag Lunch Fridays project!

We will do this on the 2<sup>nd</sup> Friday of each month.

Lunches should be brought to the school on Friday morning (Nov. 8) by 8:30 AM and placed in boxes that will be at the entrances where students enter the building at drop off.

The lunches are distributed throughout the area to local homeless shelters, camps, and to others in great need. Please know that every lunch is needed and appreciated.

If your family is able to send in a brown bag lunch, the lunch should include:

- 1) A bologna, ham, or turkey sandwich with cheese and mustard (please no mayonnaise)  
OR a peanut butter and jelly sandwich
- 2) A snack
- 3) A bag of chips
- 4) A piece of fruit
- 5) Optional: A small note or prayer; no signature required

God bless you for your generosity.

### FRIDAY BROWN BAG LUNCHES

As a way of living out the Corporal Works of Mercy this school year, we will be feeding the hungry, and giving drink to the thirsty through our Brown Bag Lunch Fridays project!

2<sup>nd</sup>  
Friday  
of the  
Month

10/11

11/08

12/13

1/10

2/24

3/14

4/11



*"Amen, I say to you, whatever you did for one of these least of my brothers of mine, you did for me."*

Matthew 25:40

# NOVEMBER 9

## CATHOLIC WOMEN'S CONFERENCE

8:30 AM to 3:30 PM

St. Mark's Church in Catonsville

Outside event - you must pre-register!

The theme of this year's conference is

"Joyful Journey: Exploring the Beatitudes,"

which will focus on practical ways to live out the Beatitudes.

<https://marylandcatholicwomen.com>

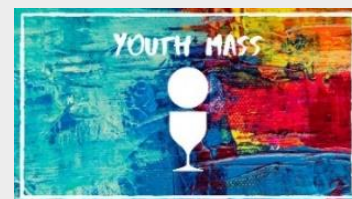


# NOVEMBER 10

## Parish Youth Mass at 5 PM

For more information, please contact Matteo Santi Amantini at

[matteo.santi-amantini@archbalt.org](mailto:matteo.santi-amantini@archbalt.org)



## FALL SPIRIT WEAR ORDERS ARE DUE!

The Spirit Wear Store opened on October 27. A few new items have been added to the store. Order by this day to ensure delivery prior to Christmas break.

See Page 26 with more information!



# NOVEMBER 11

## OPEN HOUSE FOR PROSPECTIVE FAMILIES FROM 9-11 AM

If you know of a family looking for a good Catholic school in the area, please spread the word about our Open House! Families will have a chance to tour the School with our student and parent ambassadors.

If they have any questions, please refer them to Ms. Amy Sewell at [asewell@spnmd.org](mailto:asewell@spnmd.org)



# November 12

## PICTURE MAKEUP DAY

This picture day is reserved for those students absent on our previous individual picture day or their families would like a retake of their child's picture. This is NOT for everyone!



## SPIRIT NIGHT AT BUBBA'S 33

from 11 AM to 11 PM

Please show the fundraiser flyer to your Server for us to earn 10% back on sales! Flyer is on page 25 of this newsletter!

The logo for Bubba's 33, featuring the name 'Bubba's' in a red, cursive font and '33' in a red, outlined font below it.

**SPN SPIRIT  
NIGHT DATES:**  
September 17,  
November 12,  
February 11,  
and April 15

11 AM to 11 PM

Please show the fundraiser flyer (paper or electronic copy) to your server or mention the fundraiser. SPN will earn 10% back on the food sales.

7305 Ritchie Highway  
Glen Burnie, MD 21061

# NOVEMBER 14

## SCHOOL MASS AT 9 AM

Students in Pre-K to Grade 3 will be attending this Mass. All are welcome!



# November 15

## Asynchronous Learning Day for Students

### Asynchronous Learning Day for Students



There are 2 asynchronous days. These are days students will be working from home. They are  $\frac{1}{2}$  days for students. These days are November 15, 2024 and February 28, 2025. During this time, students will be responsible for completion of work posted in Google Classroom or sent home by the teacher, so that teachers will be given the time to input final grades for the trimester.

# November 18

## Spirit Night at

## Chick-fil-A

## From 4-8 PM

Please be sure to mention SPN when placing your order. Mobile orders do not count!

Spirit Night at Chick-fil-A  
from 4:00-8:00 PM



Sept. 23  
Nov. 18  
Jan. 13  
Apr. 7

Mention our school to the cashier inside or at the drive-thru to earn 15% of the total for SPN. Mobile orders do not count toward the fundraiser. Centre at Glen Burnie 6709 Ritchie Highway Glen Burnie, MD 21061

# NOVEMBER 21

## SCHOOL MASS AT 9 AM

Students in Grades 4 through 6 will be attending this Mass. All are welcome!



School Mass  
at 9 AM

All are  
welcome!

## FALL FESTIVAL SETUP

Our Fall Festival committee and parent volunteers will transform our parish hall (gym) into a room full of games! They will start this transformation right after school to be ready for a fun-filled FALL FESTIVAL on Friday! For more information about our Fall Festival, please contact Mrs. Rachel Bruggy at [rbruggy@spnmd.org](mailto:rbruggy@spnmd.org).



Fall Festival

# NOVEMBER 22

## It's Fall Festival time!

We are very excited to host our traditional Fall Festival. The students will visit the SPN gym and have an opportunity to play games and win prizes. The **FIRM** deadline for lunch and ticket orders is **THURSDAY, NOVEMBER 14!**

Online order form is listed below:

<https://forms.diamondmindinc.com/stphilipneri/fallfestival>

Tickets will also be available on Fall Festival Day!

See pages 17-18 for more Fall Festival information and order form!



Fall Festival

# NOVEMBER 22

## SPIRIT WEAR DAY

Get into our SPN spirit by wearing your SPN spirit wear! Students will be allowed to wear the SPN spirit shirt with their gym pants!



## NO LUNCH SERVED TODAY

Due to the Fall Festival, no lunch will be served today by our lunch ladies! Students may bring in their lunch or place an order from the Fall Festival! This order must be pre-ordered. No purchasing the day of the Fall Festival!



# NOVEMBER 27

## EARLY DISMISSAL AT 12:15 PM.

After our November HOUSE ACTIVITY, the students will be dismissed! Have a very happy, healthy, and wonderful long Thanksgiving weekend!



# NOVEMBER 28 and 29

## NO SCHOOL - HAPPY THANKSGIVING!



### thanksgiving prayer

Thank You, God, for this day of thanksgiving. I am grateful for a day dedicated to gratitude, appreciation, and abundance. Thank you for a table set with food, good people to share it with, and love of You, the divine provider. As

I extend thanks, I am reminded of how difficult it is for those less fortunate to enjoy this holiday. Please, bless them with plenty and watch over us all.





# SPN ENROLLMENT FOR 2025-2026 SCHOOL YEAR



## REGISTRATION FEES:

November 1- December 1, 2024

The registration fee is \$100.

The fee will increase to \$200  
on December 2, 2024.

Our deadline for returning families is JANUARY 1.  
Look for email from Ms. Amy Sewell on OCTOBER 29.

**TIME TO SIGN UP TO RESERVE YOUR SPOT!**

## FINANCIAL ASSISTANCE AVAILABLE AT ST. PHILIP NERI SCHOOL FOR THE 2025-2026 SCHOOL YEAR

Financial assistance is available from several sources:

- 1) Archdiocese of Baltimore (AOB)
- 2) St. Philip Neri Parish
- 3) St. Philip Neri School
- 4) Applicant's Parish



### Anyone requesting financial aid from the AOB, SPN Parish or School:

Families **must complete the FACTS Financial Aid Application** found at the link below. A **NEW** application must be submitted every year if you would like to be considered for aid. This application must be completed and all required documentation submitted **by February 28, 2025**, to be eligible for any AOB, School, or Parish assistance. The cost to complete this application is \$35.

Here is the SPN direct link: <https://online.factsmgt.com/signin/3QGNP>

Log into your account or choose "New Account" to create your account and begin the application process. Questions regarding the application process can be directed to FACTS at [866-441-4637](tel:866-441-4637).

Please note that FACTS **only** processes the applications. The decisions for granting or denying requests for assistance are made separately by: The Archdiocese of Baltimore, St. Philip Neri Parish, and St. Philip Neri School. These decisions are made during the March-April time frame. Applicants will receive a response in May.

**ALL TUITION ASSISTANCE AWARDS ARE CONTINGENT UPON SUBMISSION OF A COMPLETED FACTS APPLICATION AND SUBMISSION OF PROPER DOCUMENTATION.**

**ALL APPLICATIONS MUST HAVE A "VERIFIED" STATUS BEFORE ANY ASSISTANCE IS GRANTED.**

### Anyone requesting financial aid from their parish:

Please contact your parish (other than SPN) directly and ask if they offer any financial aid.

## WHAT IS THE FALL FESTIVAL? (NOV 22)

The Fall Festival is a long-standing tradition at SPN! It has changed over the years, and currently the festival is held during the school day for the students at SPN. It is a day of fun for the students and includes carnival-style games, wheels (cake and snack), prizes, raffles, and a special lunch. The students can earn cool prizes by playing the games!

Each game requires one ticket to play. Tickets are \$0.50 for 1 ticket, \$5 for 12, and \$10 for 25 tickets. Each homeroom will be allotted a one-hour time slot to visit the Festival.

The Fall Festival is hosted by the Home and School Association. We thank the Fall Festival Committee and all of our parent volunteers who make this Festival possible!

If you need any more information, please contact Mrs. Rachel Bruggy at [rbruggy@spnmd.org](mailto:rbruggy@spnmd.org).



## WHAT IS SANTA'S SECRET WORKSHOP? (DEC 13)

Santa's Secret Workshop is a long-standing tradition at SPN! This annual event, hosted by the Home and School Association, is a student and parent favorite! The parish hall at St. Philip Neri is transformed into a Christmas wonderland for the community and parish! Boxes filled with great gifts are delivered throughout the year for this event. Santa's Secret Workshop provides the opportunity for children to shop for nice, inexpensive gifts for their loved ones. The cost of the gifts ranges from \$1 to \$15 and will be wrapped by Santa's little helpers.

Students have 30 minutes to shop and 30 minutes to get their items wrapped. They also receive a special treat this day! Students should bring a list of family member's names that they want to buy presents for. If a student brings in \$20 or more, we ask them to exchange that amount for smaller bills with the HSA Treasurer to make the shopping process a little easier on our sellers.

It takes a tremendous number of volunteers to pull off this event. The hall is set up the day prior and requires many of Santa's little elves to transform the hall. On SSW day we need over 25 sellers and 25 wrappers throughout the day.

If you need any more information, please contact Mrs. Sue Wenzlick at [swenzlick@spnmd.org](mailto:swenzlick@spnmd.org).

# TUITION ASSISTANCE RAFFLE WINNERS

## SEPTEMBER WINNERS

9/02	Lynn Menefee	\$100
9/02	Sam Georgiou	\$100
9/03	Mary Howard	\$50
9/05	Christa Tomas	\$100
9/09	Kenzi Bowser	\$50
9/09	Elaine Elliott	\$50
9/10	Finn McCloskey	\$100
9/15	Dennis Shuck	\$50
9/17	Terri Rozanski	\$100
9/18	Clay Waskiewicz	\$50
9/25	Bobbie Whitney	\$100



## WE ARE LOOKING FOR BUYERS AND SELLERS!

Tickets are sold every month for \$5/ticket.

The ticket is good for the entire month, so you have 30-31 days/chances to win either \$100 or \$50!

We have two sets of numbers (000-999) so there could be two winners each day!

To get your tickets, or if you need more information, please contact Mrs. Katie Spielman at 410-859-1212 or email her at [kspielman@spnmd.org](mailto:kspielman@spnmd.org).

Congratulations to our staff members on winning the SPN Jester Spirit Award. Throughout the year we honor a faculty or staff member for being awesome!

CONGRATULATIONS to

Ms. Mia Tran

and

Ms. Rebecca Burch



### Winter Uniform - Begins November 1

It's time to put those summer uniforms away! Beginning November 1 all students are to be in WINTER UNIFORMS. Students will wear the winter uniform from November 1 through March 31, at which time they will switch back to the summer uniform. Each grade level's uniform requirements are listed in the Parent-Student Handbook on p. 64-69.

## LATE ARRIVALS TO SCHOOL

As a reminder, if your child arrives late to school, the person dropping the student off **must** escort the student to the office and provide a reason for the lateness. If a student leaves for a doctor's appointment, when they return the person bringing the student back must also come into the office to sign them back in.

### Handbook Reminders - Morning Drop-off & Early Departures

#### Morning Drop-off

As a reminder, all students must be dropped off in the back parking lot each morning. Students should not be dropped off and enter through the main lobby, nor should cars be parking in the front of the school for drop-off in the back parking lot. The only exception to this is for PreK and Kindergarten students (and their older siblings), which are dropped off at the side door closest to the playground.

Please refer to page 5-6 in the Parent-Student Handbook for morning drop-off procedures.

#### Early Departures

If your child is going to be leaving school early, please notify their teacher in advance of the early departure so that the teacher can plan accordingly. Students are sometimes at specials classes or out of the classroom for other reasons.

Please follow these guidelines in the Parent-Student Handbook on page 27:

*"If a student must be dismissed early, the student must submit a note to the teacher, signed by the parent(s)/guardian(s), that day. The note should include the reason for the request and the time the student must leave school. The parent/guardian must sign the student out in the office."*

An email notification is sufficient, but should be sent with enough notice for the teacher to have been able to see it in advance, preferably, the day prior to the early departure if possible. You may also copy the office on these notifications ([office@spnmd.org](mailto:office@spnmd.org)). Thank you for your cooperation!

The SPN Parish Outreach Program is collecting the following items in the month of November:

#### THANKSGIVING

\$10 to \$20 Gift Cards

**CHRISTMAS** - Adopt a Child for Christmas - buy a Christmas present!

Questions? Please contact Donna Scott at [dscott@spnmd.org](mailto:dscott@spnmd.org).



## THANKS SO MUCH FOR YOUR GENEROSITY!

Our first outreach project was collecting items for those less fortunate! All of our houses sent in an incredible amount of donations for the Anne Arundel County's HOPE for All and the SPN pantry.

### OVER 2,500 ITEMS WERE COLLECTED!

The items have been delivered to the pantry, and Mr. Leo Zerhusen picked up the donations for HOPE for All. Each contribution not only supports those in need but also highlights the strength of our house spirit and our compassion for our neighbors.



## SCHOOL STORE IS OPEN! WEDNESDAYS and THURSDAYS from 7:45-8:05 AM.



The School Store will be in the front lobby of the school and will be open on Wednesday and Thursday mornings from 7:45-8:05 AM.

There will be school supplies for sale and nothing will be more than \$2.

All grades are welcome to shop at the School Store.

House color bracelets will also be available for sale for \$1.

### MARK YOUR CALENDARS

Special Olympics Maryland Cool Schools Plunge will take place on WEDNESDAY, JANUARY 29, 2025. Last year 100 students, faculty, and parents plunged into the icy waters of the Chesapeake Bay. We raised over \$17K for SOMD. Let's add more kiddos to our team! If you are interested in learning more about the plunge or joining our team, please email Ms. Amy at [asewell@spnmd.org](mailto:asewell@spnmd.org) for more information.

# Home and School Association News

## NOVEMBER 2024

For general information on HSA-sponsored events, activities, and committees visit:

<https://spnmd.org/home-school-association/>

To contact the HSA, please email [SPNHSAAMD@gmail.com](mailto:SPNHSAAMD@gmail.com)

## NOVEMBER 6

### Home and School Association GENERAL MEETING (VIRTUAL) 5:30-6:30 PM

The HSA is a very important part of our school. All families are part of the HSA. They host numerous events at our school! Please tune in and see what events the HSA hosts and how you can help out. The link to this event will come out in an ALERT message!

## Out-Of-Uniform Days - November 8 and December 3

The HSA is sponsoring three out-of-uniform days with proceeds going towards HSA-sponsored events. The first date was October 23. The cost is \$10 for all three days paid in advance or \$5 each day of. The online payment link for the Out-of-Uniform Days:

<https://forms.diamondmindinc.com/stphilipneri/hsaout-of-uniform>

## The Maryland Corn Maze - St. Philip Neri Days

Get lost in an 8-acre Taylor Swift Themed Corn Maze then stay and play on the farm all day! Use code SPN24 when purchasing your tickets at [www.MDCornMaze.com](http://www.MDCornMaze.com) for St. Philip Neri to receive 15% proceeds back to the school! SPN DAYS ARE November 2<sup>nd</sup> and 3<sup>rd</sup>. See flyer included in this newsletter for more information.

## HSA RAFFINGO

More information pertaining to the annual HSA Raffingo will come out in an ALERT message!

## Tuition Raffle

Win a year of FREE tuition for the 2025-2026 school year! OR \$2500 in cash! Drawing date will be in May 2025. To purchase tickets online, please visit:

<https://forms.diamondmindinc.com/stphilipneri/hsatuition>

Child Nutrition Program/St. Philip Neri School			November 2024 Lunch Menu	
Monday	Tuesday	Wednesday	Thursday	Friday
				1 School Closed
4 Popcorn Chicken Dinner Roll Vegetarian Beans Fresh Carrots Fruit	5 Mac n' Cheese Fritos Corn Fresh Carrots Fruit	6 Strawberry & Banana Yogurt Smoothie Mozzarella Cheese Stick Graham Crackers Tomatoes & Carrots w/Ranch Muffin Fruit	7 Sweet n' Sour Meatballs w/ Fried Rice Fritos Broccoli Florets Fresh Carrots Fruit	8 Mozzarella Cheese Sticks Marinara Cup Carrot Coins w/Ranch Celery Sticks Fruit
11 Chicken Tenders Tostito Rounds with Salsa Cup Baked Beans Fresh Carrots Fruit	12 Meatballs in Marinara Sauce Dinner Roll Green Beans Carrots Fruit	13 Chicken Mac n' Cheese Bowl Corn Fresh Carrots Fruit	14 Rotini w/Meat Sauce Broccoli w/Ranch Fresh Carrots Fruit	15 Asynchronous Learning Day
18 Chicken Parmesan Sandwich Green Beans Carrot Sticks Fruit	19 Taco In A Bag Salsa Cup & Sour Cream Corn Fresh Carrots Fruit	20 Penne Alfredo Fritos Broccoli & Carrots w/Ranch Fruit	21 Strawberry Banana Yogurt Apple Cinnamon Bar Mozzarella Cheese Stick Carrots w/Ranch Fruit	22 Fall Festival
25 Chicken Quesadilla Salsa & Sour Cream Corn Fresh Carrots Fruit	26 Tuna Fish Salad Sandwich Tomato Soup Celery Sticks w/Ranch Fruit	27 12:15pm Dismissal	28 Happy Thanksgiving	29 School Closed
Student's may take 3 out of the 5 meal components Required to take a FRUIT and/or VEGETABLE 1% White Milk or Non-Fat Chocolate Milk			<i>Offered Daily:</i> Milk: 1% White, NF Chocolate Fresh Fruit & Vegetables may include: apples, oranges, bananas, seasonal fruits, carrots, celery, broccoli, cauliflower, tomatoes, side salads & seasonal veggies	
<b>Menu subject to change without notice.</b>				

### Lunch Account Access, Balances & Reminders

Please make sure that you are regularly checking the balance in your student's lunch account. There are several lunch accounts that are presently in arrears. If you have any questions about your lunch account, please email Ms. Nancy Reed at [nreed@spnmd.org](mailto:nreed@spnmd.org).




Lunch accounts are accessed through PowerSchool. Please check PowerSchool for your child's account balance and to add funds. If you have not logged into PowerSchool before, please contact Mrs. Daley ([cdaley@spnmd.org](mailto:cdaley@spnmd.org)) for your account information.

Please make sure money is on your child's account prior to them ordering lunch. When sending in payments, please place the check into an envelope with your child's name written on the outside and note that it is for their lunch account. Checks should be made payable to "Child Nutrition".



# St. Philip Neri School November 2024



Sun	Mon	Tue	Wed	Thu	Fri	Sat
<p><b>**Asynchronous Learning Day for Students (Friday, November 15):</b>            There are 2 asynchronous learning days this school year. The first one is on Friday, November 15. On this day students will be working from home. This is a ½ day for students. During this time, students will be responsible for completion of work posted in Google Classroom or sent home by the teacher, so that teachers will be given the time to input final grades for the trimester.</p>					1 <b>NO SCHOOL</b> Parents Night Out Sponsored by Girl Scouts 6-9pm	2 SPN Days at MD Corn Maze
3 SPN Days at MD Corn Maze  Daylight Savings Time Ends (Don't forget to set your clocks back)	4 CHORUS 3-4:30pm Drama Jr. 3-4:30  House Penny Wars Starts	5  Used Uniform Exchange 3-5pm  <i>The Wizard of Oz Rehearsal 3-4:30pm</i>	6 NJHS Mtg. 7:15am  School Store 7:45am-8:05am  Robotics 3-4:30pm Hiking Club Meeting 3-4pm HSA Virtual Meeting 5:30pm	7 School Store 7:45am-8:05am  School Mass 9am (All Grades) NJHS Meet 3:15-4pm (pack brown bag lunches) Italia's Corner Spirit Night 4-8:30pm <i>The Wizard of Oz Rehearsal 3-4:30pm</i>	8 <b>HSA Out of Uniform Day #2</b>  Brown Bag Lunches for the Hungry  House Penny Wars Ends	9
10 <b>Spirit Wear Order Deadline</b>  YOUTH MASS 5:00 p.m.	11 CHORUS 3-4:30pm Drama Jr. 3-4:30  Open House 9-11am (for prospective families)	12 <b>INDIVIDUAL PICTURE MAKEUP DAY</b>  Bubba's 33 Spirit Night 11am-11pm <i>The Wizard of Oz Rehearsal 3-4:30pm</i>	13 School Store 7:45am-8:05am  Robotics 3-4:30pm  Volleyball Club (Middle School) 3:15-4:15pm Hiking Club Group 1 Hike	14 School Store 7:45am-8:05am  School Mass 9am (PK - Grade 3)  <i>The Wizard of Oz Rehearsal 3-4:30pm</i>	15 <b>Asynchronous Learning Day for Students**</b> (students DO NOT report to school - see note at top of this calendar)	16 
17	18 CHORUS 3-4:30pm Drama Jr. 3-4:30  Chick-fil-A Spirit Night 4-8pm	19  <i>The Wizard of Oz NO REHEARSAL</i>	20 School Store 7:45am-8:05am  Robotics 3-4:30pm Hiking Club Group 2 Hike	21 School Store 7:45am-8:05am  School Mass 9am (Grades 4-8) Fall Festival Setup <i>The Wizard of Oz Rehearsal 3-4:30pm</i>	22 <b>Spirit Wear Day</b> (Spirit Wear Shirt w/ gym sweatpants)  <b>FALL FESTIVAL</b>	23
24 	25 CHORUS 3-4:30pm NO Drama Jr.	26  <i>The Wizard of Oz Rehearsal 3-4:30pm</i>	27 School Store 7:45am-8:05am  House Color Day (wear house color w/ gym sweatpants)  <b>EARLY DISMISSAL 12:15pm</b>	28 <b>NO SCHOOL</b>  	29 <b>NO SCHOOL</b>	30

**Weather-Related School Closings**

If AA County Schools Close for the day, SPN will also be closed. For early closings, SPN closes the same time as AA County.

Listen to WBAL Radio 1090, watch WBAL TV Channel 11, or check for an ALERT message. If schools are closed due to inclement weather, Extended Care is also closed.





# SPN FALL FESTIVAL



**Friday, November 22, 2024**

The annual St. Philip Neri School Fall Festival is fast approaching. Each year the students enjoy games, wheels, fun and prizes. They also get to order pizza from *Papa Johns*, which must be pre-ordered online or on the attached form by **Thursday, November 14. NO EXCEPTIONS.** We must have a full count the weekend before the Fall Festival to contact *Papa Johns* to order. **We will not be able to take ticket or lunch orders after Thursday, November 14.**

The festival will be 1 day. **Papa Johns pizza lunch will be served on Friday 11/22 to the entire school for anyone who orders.**

**The class schedule for attending will be as follows:**

- Pre-K & Kindergarten: 8:30am – 9:30am**
- 4<sup>th</sup> & 5<sup>th</sup> Grades: 9:45am – 11:00am**
- 1<sup>st</sup>, 2<sup>nd</sup>, & 3<sup>rd</sup> Grades: 11:15am – 12:30am**
- 6<sup>th</sup>, 7<sup>th</sup>, & 8<sup>th</sup> Grades: 1:00pm – 2:30pm**

All students will eat lunch in their classrooms. Students may wear an SPN Spirit wear shirt/sweatshirt with SPN gym sweatpants (or spirit wear sweatpants) or the gym uniform.

**Please bring a bag or backpack (labeled with the student's name) to carry their prizes and tickets.**

**Our two most popular wheels are the Treat Wheel and the Snack Wheel. In order for these games to be so successful, we rely on the generosity of our parents.**

**Treat Wheel:**

This year treats can be store-bought and prepackaged OR homemade! Examples of store-bought include: Family size boxes of mini muffins, Hostess cakes, Little Debbie cakes, prepackaged cookies, cakes, etc. Families will receive **one volunteer hour for every 2 large size boxes/containers of store-bought/prepackaged treats.** Families will receive **two volunteer hours for every 1 homemade treat** (FULL size cakes/FULL batch (2 dozen) of cookies/full batch of brownies, etc. not separated). Please send in all store-bought treats by Friday, November 15. Homemade treats can be brought the day before (Thurs. 11/21) or by 8am the day of the festival. Sign in at the school office to get your credit when you drop off the treats. **All treats must be labeled with your child's name, parent/guardian name and homeroom in order to get volunteer hours credit.** Please also label for the "Fall Festival" so the treats do not get mixed up with other things.

The students really **LOVE** winning at this wheel. Please help make this a success! Thank you!

**Snack Wheel:**

We are asking that each child send in the following items to the school office by Friday, November 15:

**Pre-K and Kindergarten: Big bag of pretzels, popcorn, Cheetos, etc.**

**Grades 1 – 4: Big bag of chips or Doritos**

**Grades 5 – 8: 2-liter bottle of soda**

(You do not get volunteer credit for this, but the kids **LOVE** winning the snacks!)

**Games we will be playing:**

Lucky Duck	Muffin Tin Toss	Bean Bag Toss	Snack Wheel
Christmas Dice	Lollipop Tree	On Target	Sports Wheel
Ladder Golf	Football Toss	Plinko	Treat Wheel
Dartless Balloons	Toilet Toss		

Games are 1 Ticket each. Prizes will be Out-of-Uniform passes, sports items, stuffed animals, and SO much more.

**TICKETS ARE TO BE PURCHASED BEFORE PLAYING. CASH IS NOT TAKEN AT THE GAMES.**

**Tickets can be pre-ordered** before the Festival (see attached form or pay online) OR at the ticket table the day of the Festival.

This is a fun day for the students and the parent volunteers. **THANK YOU FOR SUPPORTING THIS HSA EVENT!!**

**Fall Festival Committee: Rachel Bruggy, Chasity Nicoli, Sandy Allred, Ashley Coleman, McKenzie Cosgrove, Jamie Gillespie and Stacy Loveridge  
HSAfallfestival@gmail.com**

# FALL FESTIVAL 2024

## ORDER FORM FOR GAME TICKETS & LUNCH

All lunch **MUST** be ordered ahead of time!

(Return Orders by Thursday, November 14)

**FIRM DEADLINE FOR ORDERS**

THANK YOU!

**Order Online! We HIGHLY encourage ordering online!**

<https://forms.diamondmindinc.com/stphilipneri/fallfestival>

**\*\*This form does NOT need to be returned if ordering online.**

STUDENT \_\_\_\_\_ HOMEROOM \_\_\_\_\_

**I. GAME TICKETS: (Pre-order by Thursday, November 14)**

50¢ EACH

12 FOR \$5

25 FOR \$10 (most commonly selected quantity)

Number of tickets ordered \_\_\_\_\_

**Total for Tickets: \$** \_\_\_\_\_

**II. LUNCH ORDER FORM (MUST BE PRE-ORDERED by Thursday, November 14)**

Cheese pizza - \$2.00/slice \_\_\_\_\_ x \$2.00 = \$ \_\_\_\_\_

Chips - 0.50¢ \_\_\_\_\_ x \$0.50 = \$ \_\_\_\_\_

Soda/Water - \$1.00 (Soda may only be ordered for students in 6th, 7th, and 8th grades. If you order a soda for a student in PK-5, the student will receive a bottle of water instead, NOT a soda. Thank you.)

Coke \_\_\_\_\_ x \$1.00 = \$ \_\_\_\_\_

Diet Coke \_\_\_\_\_ x \$1.00 = \$ \_\_\_\_\_

Sprite \_\_\_\_\_ x \$1.00 = \$ \_\_\_\_\_

Water \_\_\_\_\_ x \$1.00 = \$ \_\_\_\_\_

**Total for Lunch: \$** \_\_\_\_\_

**III. PAYMENT**

**TOTAL ENCLOSED: \$** \_\_\_\_\_

(Make check payable to SPN HSA)

ALL GAME TICKET AND LUNCH ORDERS:

- **MUST BE RETURNED BY Thursday, November 14. No Exceptions!**
- **TICKETS WILL BE GIVEN OUT THE MORNING OF THE FESTIVAL.**
- *Tickets will also be available for sale at the Ticket table at the Festival*



**Santa's Secret Workshop**  
**Thursday, December 12, 8:30 AM - 3:00 PM**  
**Friday, December 13, 8:30 AM - 5:00 PM**



Next month, the parish hall will be converted into a Christmas Wonderland for our children and parish! Boxes filled with great gifts for our children to purchase have been coming in daily! Santa's Secret Workshop provides the opportunity for SPN school kids to shop for nice, inexpensive gifts for their loved ones. Each class will have time during the school day to visit the Workshop and have their items wrapped by Santa's little helpers.

We are keeping the workshop open after school from 3-5 PM on Friday, December 13, for those children who need a little more time in purchasing their gifts. We are also opening up the Workshop to the parish community.

It takes a lot of work to transform the parish hall into a Christmas Wonderland, so we need your help! Please fill out the form below, and return it to the school office to let us know that you can help out! Lunch on both days will be provided for the volunteers! Donuts and coffee will be available to volunteers on Friday morning. Any hours worked will count toward your volunteer hours at SPN. Please feel free to send me an email if you have any questions!

We are also looking for donations of Dunkin' Donut gift cards! Any \$10 cards donated will receive 1 volunteer hour! Please send in an envelope addressed to me – don't forget to place your name on the card to get the credit!

Thanks and God Bless,  
 Sue Wenzlick

[swenzlick@spnmd.org](mailto:swenzlick@spnmd.org)

*Please return form below to the school office by Friday, December 6, or email Mrs. Sue Wenzlick with your information.*



**Santa's Secret Workshop Volunteer Form (must have volunteer certification - VIRTUS)**

Name: \_\_\_\_\_ Email Address : \_\_\_\_\_  
 Child's Name : \_\_\_\_\_ Home Room: \_\_\_\_\_

*Please check the times you can help out. Thanks in advance for your support!*

**Thursday, December 12 - Moving boxes and setting up the workshop**

\_\_\_\_\_ Decorating, moving boxes, setting up tables (8 AM - 5 PM) Time available: \_\_\_\_\_

**Friday, December 13 - Selling items, wrapping items, and clean-up crew**

\_\_\_\_\_ Seller (8:00 AM to 5:00 PM) Time available: \_\_\_\_\_

\_\_\_\_\_ Wrapper (8:00 AM to 5:00 PM) Time available: \_\_\_\_\_

\_\_\_\_\_ Clean-up Crew (4:00 PM -6:00 PM) Time available: \_\_\_\_\_

# Knights of Columbus

## 'Keep Christ in Christmas' Poster Contest



We would like to invite your school/organization to take part in the Knights of Columbus "Keep Christ in Christmas" poster contest for all boys and girls from ages 5 through 14. By engaging the talents of our young people, we hope they will come to a deeper understanding of the true meaning of Christmas, and that their artwork will bring others to remember Christ in Christmas.

The contest will be conducted locally with winning entries advancing through district/regional and state competitions to the international level. The winning entries will serve as the basis for a series of international "Keep Christ in Christmas" posters, with creative credit going to the artists.

The Knights of Columbus is one of the country's largest charitable organizations, with members donating more than \$170 million to charitable and benevolent causes and 70.5 million volunteer hours last year. Among the many public services Knights provide is their long-standing "Keep Christ in Christmas" program, which features faith-based local events and public service announcements.

## Judging & Awards

### RULES

- Poster must reflect the theme of **Keep Christ in Christmas**.
- Each poster should be the original work (including concept, layout, slogan and any visual images) of a single person.
- Poster must be 11X17 inches in size. If pastels, chalk or charcoal are used the poster must be laminated or covered with clear plastic.
- Each poster must be submitted with a Knights of Columbus "Keep Christ in Christmas" Poster Contest entry form — **make sure your council number is included**. The name and age of the entrant should be printed on the reverse side of the poster in case the poster and entry form get separated.

### JUDGING

Judging teams should be composed of students, Knights, teachers, administrators, council Chaplain, pastor, etc. A 100-point scoring system will be used to determine the winners.

**Slogan — 30 Points:**  
How clearly is the theme presented?

**Visuals — 30 Points:**  
How well do the visuals convey the message?

**Overall Impact — 40 points:**  
How effective was the poster in capturing your attention and causing you to reflect on the topic at hand?

### TOPICS/CATEGORIES

Each poster must reflect the **Keep Christ in Christmas** theme with a visual image. There is no limit to the number of posters each contestant may submit.

### ELIGIBILITY

The Knights of Columbus "Keep Christ in Christmas" Poster Contest is open to all young people between the ages of 5 and 14. Age eligibility is determined by the age of the contestant as of November 1.

### AGE GROUPS

Contest entrants compete in one of three age groups — ages 5 through 7, ages 8 through 10, and 11 through 14. Some schools may have different age brackets for their elementary and middle schools. In these cases it may be appropriate to group students by grade rather than age. Sponsoring councils should use their own judgment in deciding how to group participants. **Each local, district, regional or state competition may have up to 6 winning entries — a first and second place winner in each age group.**

### CONTEST LEVELS

The "Keep Christ in Christmas" Poster Contest can consist of up to five levels of competition: council, district, regional, state and international. Below is a description of each to help you understand the progression of the program.

## Spread the Light of Christ!

The Knights of Columbus invites families to join them in a celebration to signify the birth of the Light of the World.



Date: December 1, 2024 Deadline, Late entry up to Dec 6.

Time: 6-7p.m.

Place: St. Philip Neri Parish Hall

For Additional Information: GK Chris Figueroa cfiggy21@yahoo.com





Caballeros de Colón  
**Celebra a Cristo  
en la Navidad**

## Concurso de carteles

Fecha de entrega: December 1, 2024, Late entry Dec. 6, 2024

Patrocinador: St Philip Neri Council #14612

Contacto: GK Christopher Figueroa cfiggy21@yahoo.com



Fe en Acción

Familia

# PARISH EVENTS AND INFORMATION

<http://www.stclementandstphilipneripastorate.org/>



## SPN PARISH MASS SCHEDULE WEEKEND MASSES

Saturday Mass at 5 PM  
Sunday Masses at  
8:00 AM, 9:30 AM, and 11:30 AM

## DAILY MASS

Thursday at 9:00 AM  
Mon, Tues, Wed, Fri at 6:30 PM

## St. Philip Neri Food Pantry and Outreach Needs

We are in critical need of the following staple items:

Spaghetti Sauce	Toilet Paper
Ravioli (Pop-to Cans Only)	Candy
Canned Chicken & Tuna	Cereal
Canned Green Beans	Macaroni & Cheese
Chewy Granola Bars	Boxed Pasta
Pancake Mix & Syrup	
Peanut Butter/Cheese Crackers	
Any sweet or salty snacks, chips, & cookies	

If you have questions about the Food Pantry,  
please contact Donna Scott at  
[dscott@spnmd.org](mailto:dscott@spnmd.org).

SPN is NOT accepting clothing at this  
time. Please do not drop off any clothing.  
We will only accept NEW SOCKS and  
UNDERWEAR for both men and women.

## SPN's MOM'S GROUP

Meets 2<sup>nd</sup> Monday of the Month at 7:15 PM.  
For more information, contact Elizabeth at  
[eadalasio@gmail.com](mailto:eadalasio@gmail.com).

## O.C.I.A. CLASSES - Wednesdays at 7:15 PM

If you are interested in joining the Catholic  
Church, please contact Tim Feeney at  
[tfeeney@spnmd.org](mailto:tfeeney@spnmd.org).

## CONFIRMATION CLASSES

For more information, contact Hunter at  
[hluers@spnmd.org](mailto:hluers@spnmd.org).

## WOMEN'S BIBLE STUDY - Walking with a Purpose - Wednesdays at 9:30 AM and 7:15 PM

Contact call the parish office at 410-859-0571  
or contact Theresa with questions at  
[theresaewaggoner@gmail.com](mailto:theresaewaggoner@gmail.com).

## GRIEF PEER-SUPPORT GROUP

Thursdays at 7 PM in the St. John Room.  
For more information, please call 443-889-2488  
or email at [stphilipnerigriefsupport@junocom](mailto:stphilipnerigriefsupport@junocom).

## SACRAMENT OF BAPTISM

2<sup>nd</sup> Tuesday of the Month - Parents planning to  
have their child baptized should begin the  
baptism preparation process by contacting the  
SPN Parish Office at 410-859-0571.

## YOUTH & YOUNG ADULT MINISTRY

Contact for Youth Ministry: Matteo Santi  
Amantini - [matteo.santi-amantini@archbalt.org](mailto:matteo.santi-amantini@archbalt.org)  
Contact for Young Adult Ministry:  
Catherine Tirschman at 443-764-7299.

## MONTHLY PARENT NIGHT OUT

1<sup>st</sup> Friday of the month from 6-9 PM  
Baby sitting provided by the Girl Scouts at SPN.  
Contact Mary Ann to register at [rakak@aol.com](mailto:rakak@aol.com).

# ST. PHILIP NERI TUITION RAFFLE

Supporting the SPM H.S.A.



St. Philip Neri  
Nourishing the Soul, Mind & Body

..... Top Prize .....

## ONE FULL YEAR OF TUITION\*

### VALUED @ \$7,175

.....  
Or \$2,500 Cash Option

Ticket Price:

# \$25

3 for \$60 | 5 for \$100

Drawing Date:

# May 2025

@ St. Philip Neri School

### ORDER TICKETS ONLINE @

>>> [forms.diamondmindinc.com/stphilipneri/HSATuition](https://forms.diamondmindinc.com/stphilipneri/HSATuition) <<<

For more information, please email [SPNHSAMD@gmail.com](mailto:SPNHSAMD@gmail.com).

\*Minimum of 400 tickets must be sold to award the St. Philip Neri Tuition prize, or top prize reverts to \$2,500 cash option. Tuition prize is transferrable and must be redeemed during the 2025/2026 school year. Winner is responsible for all taxes, please consult a tax professional.

Sponsor & Proud Supporter:

**TOMAS BROTHERS**  
Home Improvement

[TomasBrothers.com](https://TomasBrothers.com)

# It's St Philip Neri Days At The Maryland Corn Maze



## November 2-3, 2024

Get LOST in an 8-Acre TAYLORS VERSION Corn Maze then stay & play on the farm all day! (go on a hayride, pick out a pumpkin to purchase, shoot paint ball & slingshots, climb a giant straw pyramid & tire mountain, ride the zipline, jump on the jumpad, grab food at Carnival Eats & more!)

USE code **SPN24** when purchasing your tickets at  
[MDCornMaze.com](http://MDCornMaze.com)

for St. Philip Neri **to receive 15% BACK!**

Join in for a day of ...

### FUNDRAISING, SAVINGS & GOOD FALL FUN!

[MDCornMaze.com](http://MDCornMaze.com)

Exclusive fundraising group coupons

**SAVE \$1**

ON

a snow cone  
at

GiGi's Snowbarn

**SAVE \$1**

ON

Chocolate covered cheesecake  
at

Carnival Eats

**SAVE \$1**

ON

a pumpkin  
at

The General Store



# *Bubba's 33* SPIRIT NIGHT



SCRATCH-MADE

*Food  
FOR  
All*



**Dine with us on  
the following dates  
to benefit**



St. Philip Neri School

**Tuesday, September 17<sup>th</sup> 2024**

**Tuesday, November 12<sup>th</sup> 2024**

**Tuesday, February 11<sup>th</sup> 2025**

**Tuesday, April 15<sup>th</sup> 2025**

**10% of sales from any participating orders  
from**

**Dine In or Carry Out will be donated to the  
school.**

**Please let your Server know!**

**Fundraiser runs from 11-11**

**Dine In & Carry Out**

**(410)760-7427 • 7305 Ritchie Highway, Glen Burnie**



# School Apparel



## St. Philip Neri Fall Spirit Wear 2024

St. Philip Neri School Fall Spirit wear is available for purchase beginning Sunday 10/27/24 until Sunday 11/10/24. The store will close on 11/10/24, so be sure to order now! Orders can be paid by credit card on-line. The school will make an announcement when the apparel is ready for pick up at the school approximately 2-3 weeks after the store closes.

Please contact Ms. Amy Sewell with any questions - [asewell@spnmd.org](mailto:asewell@spnmd.org) - 410-859-1212 ext. 2107.

Go to the online store at <https://stphilipnerifallapparel24.itemorder.com/>

Online Store Deadline: Sunday November 10th, 2024 (11:59pm EST)

Port Authority Youth Team Jacket



Port Authority Team Jacket



Port & Company Youth Core Fleece 1/4-Zip Pullover Sweatshirt



Note: Can Be Worn In Lieu Of SPN School Sweater

Port & Company Core Fleece 1/4-Zip Pullover Sweatshirt



Note: Can Be Worn In Lieu Of SPN School Sweater

Port & Company Youth Essential Tee



Port & Company Essential Tee



Port & Company Youth Long Sleeve Core Cotton Tee



Port & Company Long Sleeve Essential Tee



Port & Company Youth Core Fleece Pullover Hooded Sweatshirt



Port & Company Essential Fleece Pullover Hooded Sweatshirt



Port & Company Youth Essential Tee



8 Colors

Port & Company Essential Tee



8 Colors

Port & Company Fleece-Lined Knit Cap



Pennant Flannel Pants



PROBST & SONS  
SPORTS

Custom Screen Printing & Embroidery \* Team Sports Uniforms & Equipment  
Corporate Apparel \* Promotional Items & Ad Specialties \* Varsity Jackets

Visit us on the web at: [www.propstandsons.com](http://www.propstandsons.com) \* Phone: 410-761-9571 \* Fax: 410-761-2434  
107 Mountain Road, Suite M \* Pasadena, Maryland \* 21122

Like & Follow us! We keep our feet moving, do you? [facebook.com/teampropst](https://www.facebook.com/teampropst) [@teampropst](https://twitter.com/teampropst)

SPN HOUSE

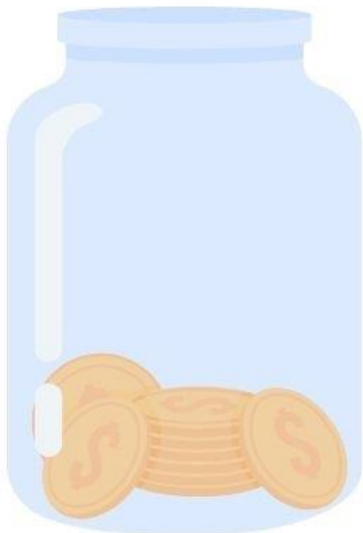
# Penny WARS

November 4-8



**HOUSES WILL COMPETE FOR THE MOST POINTS**

## Penny War Rules



### **ADDING:**

1 penny = 1 point

### **SUBTRACTING:**

1 nickel = 5 points

1 dime = 10 points

1 quarter = 25 points

**THANK YOU FOR SUPPORTING THE 8TH GRADE CLASS**

# St. Philip Neri School - Spirit Nights 2024-2025



Italia's Corner Cafe  
Burwood Village Center  
7089 Baltimore Annapolis  
Blvd., Suite F  
Glen Burnie, MD 21061

**1st** Thursday of the  
month  
4:00 pm - 8:30 pm

Thurs., Sept. 5  
Thurs., Oct. 3  
Thurs., Nov. 7  
Thurs., Dec. 5  
Thurs., Jan. 2  
Thurs., Feb. 6  
Thurs., Mar. 6  
Thurs., Apr. 3  
Thurs., May 1  
Thurs., June 5  
Thurs., July 3  
Thurs., Aug 7

Please mention SPN  
when you order for  
dine-in or carry-out. The  
Italia's Corner cashier will  
put all receipts in a  
basket; SPN will earn  
10% back on the total.



Primanti Bros.  
Restaurant & Bar  
996 Corporate Boulevard  
Linthicum, MD 21090

**All Day Long**  
11:00 am - 11:00 pm

Wed., Sept. 11  
Wed., Oct. 16  
Wed., Dec. 18  
Wed., Mar. 19  
Wed., May. 14

SPN earns 20% back  
when you use the code  
DINE2DONATE for online  
orders or by showing the  
[FLYER](#) in the restaurant.



Bubba's 33  
7305 Ritchie Highway  
Glen Burnie, MD 21061

**All Day Long**  
11:00 am - 11:00 pm

Tue., Sept. 17  
Tue., Nov. 12  
Tue., Feb. 11  
Tue., Apr. 15

Please show the  
[fundraiser flyer](#) to your  
server or mention the  
fundraiser. SPN will earn  
10% back on the food  
sales. Good for dine-in or  
carry-out



Chick-fil-A  
Centre at Glen Burnie  
6709 Ritchie Highway  
Glen Burnie, MD 21061

4:00 pm - 8:00 pm

Mon., Sept. 23  
Mon., Nov. 18  
Mon., Jan. 13  
Mon., Apr. 7

Mention our school to the  
cashier inside or at the  
drive-thru to earn 15% of  
the total for SPN.  
Mobile orders do not count  
toward the fundraiser.



Panda Express  
6620-A Ritchie Hwy,  
Glen Burnie, MD 21061

**All Day Long**  
9:30 am - 11:30 pm

[Wed., Oct. 23](#)  
**Code 376230**

[Wed., Dec. 11](#)  
**Code 376231**

[Wed., Jan. 29](#)  
**Code 376232**

Order online and enter  
the fundraiser code listed  
above OR show the flyer  
in the restaurant for SPN  
to earn 20% of your order  
total.



Chipotle  
920 Cromwell Park Dr  
Ste 101  
Glen Burnie, MD 21061

4:00 pm - 8:00 pm

Tues., Oct. 8

ORDER ONLINE FOR  
PICKUP USING CODE  
**AB48F78**

OR SHOW [THIS FLYER](#)  
IN THE RESTAURANT  
for SPN to earn 25% of  
your order total.