



2024-2025 School Year



Official PBIS Silver School & 2024 Kindness Certified School
2021-2023 Top Work Places – 3 years in a row

Social Media

Facebook:

St. Philip Neri Catholic
School

Instagram:

Spnjesters

SEPTEMBER 2024

INFORMATIONAL FLYERS INCLUDED IN THIS NEWSLETTER:

SCHOOL EVENTS –SPN Apparel, Annual Fund Purse Bingo (9/27), SPN Linthicum Community Fair Info (9/28), September Calendar, September Lunch Menu, HSA Tuition Raffle Flyer, School Masses, faculty listing, and SPIRIT NIGHTS at restaurants
PARISH EVENTS – O.C.I.A. Classes, Parish Yard Sale (10/12), Parents Night Out, SPN Mom’s Group, Confirmation Classes, Mom’s Support Group, St. Clements Fair (9/28)
OUTSIDE EVENTS –Nun Run (9/14) and CEA Golf Tournament (10/15)

Looking Ahead

- September 2, 2024 NO SCHOOL – Labor Day
- September 3, 2024 Spirit Wear Order Deadline at Midnight
- September 5, 2024 HSA’s Charleston Wrap Fundraiser Kick-off Day
- September 5, 2024 School Mass for All Grades at 9 AM
- September 5, 2024 Spirit Night at Italia’s Corner Café from 4-8:30 PM
- September 6, 2024 Band Demo for Grades 4 through 8
- September 6, 2024 Parents Night Out sponsored by the Girl Scouts from 6-9 PM
- September 8, 2024 Youth Mass at 5 PM
- September 9, 2024 First Chorus Practice – Students in Grades 5 through 8
- September 11, 2024 Spirit Night at Primanti Bros. from 11 AM to 11 PM
- September 12, 2024 School Mass for pre-K to Grade 3 at 9 AM
- September 14, 2024 OUTSIDE EVENT – Nun Run/Walk
- September 16-20 MAP Testing Week for Grades 2 through 8
- September 17, 2024 Spirit Night at Bubba’s 33 from 11 AM to 11 PM
- September 19, 2024 School Mass for Grades 4 and 5 at 9 AM
- September 20, 2024 House Color Day – Wear your House Colors!
- September 23, 2024 Spirit Night at Chick-fil-A from 4-8 PM
- September 24, 2024 Early Childhood Bake Sale
- September 25, 2024 Special Donor Reception at 6 PM
- September 26, 2024 School Mass for Grades 6 through 8 at 9 AM
- September 27, 2024 Spirit Wear Day / Charleston Wrap Orders Due
- September 27, 2024 Annual Fund Purse Bingo – doors open at 5:30 PM
- September 28, 2024 Linthicum Community Parade (9 AM) and Fair (10 AM to 3 PM)
- September 29, 2024 St. Clement’s Fall Festival from 11 AM to 3 PM
- September 30, 2024 Joe Corbi’s Pizza Fundraiser Kick-Off

Mission Statement:

St. Philip Neri School is dedicated to fostering Catholic faith and academic excellence. Under the guidance of the Holy Spirit, students are provided the opportunity to develop their gifts and talents while striving to become active members of their church. A foundation for future success and life-long learning is provided in partnership with the family, parish and school community.

September 2

NO SCHOOL
Happy Labor Day



September
5, 12,
19, and 26



School Mass at 9 AM

9/5 - All Grades
9/12 - pre-K to Grade 3
9/19 - Grades 4 and 5
9/26 - Grades 6 through 8

September 5

Spirit Night at Italia's
Corner from 4-8:30 PM

SPN Spirit Night at Italia's Corner



1st Thursday of the Month
4:00-8:30 PM
7089 B&A Blvd.
Glen Burnie, MD 21061

Please mention SPN when you order for dine-in or carry-out. The Italia's Corner cashier will put all receipts in a basket. SPN will earn 10% back on the total!

CHARLESTON WRAP
FUNDRAISER KICK-OFF DAY

September 6

BAND DEMONSTRATION

Students in Grades 4 through 8 will be given a band demo during school.

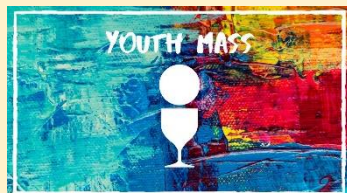
PARENTS NIGHT OUT

Sponsored by the Girl Scouts from 6-9 PM. See flyer for more details!

September 8

Youth Mass at 5 PM

This Mass is sponsored by our SPN Parish Youth Ministry. All are welcome to attend!



September 9

SPN CHORUS
PRACTICE
STARTS!

3:00-4:30 PM

Open to all students in grades 5-8! For more information, please contact Mr. Lathroum at plathroum@spnmd.org.



September 11

Spirit Night at Primanti Bros
from 11 AM to 11 PM

PRIMANTI BROS.
RESTAURANT & BAR

Sept 11, Oct 16, Dec 18, Mar 19, May 14
11 AM to 11 PM

SPN earns 20% back when you use the code
DINE2DONATE for online orders or by showing
the flyer in the restaurant.

996 Corporate Boulevard
Linthicum, MD 21090

September 14

NUN RUN/WALK

Outside event sponsored by
the Little Sisters of the Poor.
See flyer included in this
newsletter for more
information.



September 16-20

MAP TESTING WEEK for
students Grades 2 through 8



MAP stands for Measures of Academic Progress.
MAP is a three-part test that measures student
knowledge in reading, language in reading, language
usage, and mathematics.

Students in Grades 2 through 8 should be well
rested for taking these tests.
*It is extremely important that students be on
time for testing days!*

September 17

Spirit Night at Bubba's 33
from 11 AM to 11 PM

Bubba's
33

SPN SPIRIT
NIGHT DATES:
September 17,
November 12,
February 11,
and April 15

11 AM to 11 PM

Please show the fundraiser flyer (paper or electronic
copy) to your server or mention the fundraiser. SPN
will earn 10% back on the food sales.

7305 Ritchie Highway
Glen Burnie, MD 21061

Please join us for a night out on the
town and help support the
Home and School Association!

September 23

Spirit Night at Chick-fil-A
from 4-8 PM



Spirit Night at Chick-fil-A
from 4:00-8:00 PM

 Sept. 23
Nov. 18
Jan. 13
Apr. 7

Mention our school to the cashier inside or at the drive-thru to earn 15% of the total for SPN. Mobile orders do not count toward the fundraiser.
Centre at Glen Burnie 6709 Ritchie Highway Glen Burnie, MD 21061

September 24

Early Childhood Bake Sale
7:45 - 8:05 AM



Students can purchase tasty treats
before school begins!
Proceeds benefit our Early Childhood
programs!

September 25

Special Donor Reception



We are hosting a reception for our wonderful donors to our Annual Fund. This is a chance for us to thank them for their support over the years. This is an invite-only event.

September 27

Wear your Spirit Wear!
Charleston Wrap Orders Due!

Annual Fund
Purse Bingo



Tickets are going fast for this fun event!
Ticket cost is \$25 to play 20 games.
Winners will receive a designer purse like COACH, Michael Kors, Kate Spade, and Vera Bradley.

September 28

Linthicum Community Parade and Fair

We are participating in the annual Linthicum Community Fair by walking in the parade and hosting a booth selling pulled pork and drinks. See flyer for more details about this event! We will need volunteers to help with this event!

September 29

St. Clement's Fall Festival

See flyer for more details about this event!

September 30

HSA's Joe Corbi's Pizza Fundraiser Kick-Off

September 3 at 11:59 PM

DEADLINE TO ORDER SPN SPIRIT WEAR

We are using Propst & Sons Sports, a local vendor, for our Spirit Wear this year!

The link to the online store:

<https://stphilipneriapparel24.itemorder.com>

See the flyer for more information about the available items, costs, and how to order your 2024-2025 SPN spirit wear. We are only open for a two-week period so get your orders in NOW!

Items will be processed, individually wrapped, and sent to SPN two to three weeks following the closing of the store. Families will be notified, by email, about picking up their items.

Our SPN jackets come in youth and adult sizes and may be personalized with your name.

The SPN quarter zips may be worn instead of the SPN sweater during the school day.

The short sleeve and long sleeve Spirit Wear shirts may be worn on Spirit Wear Days ONLY!

Check out the SPN Mom, Dad, and Grandparents shirts.

The SPN Hoodies may be worn on gym days ONLY!

NEW THIS YEAR: HOUSE COLOR SHIRTS!

Purchase your child's house color shirt for house meeting days!

The House Color Shirts available from the Spirit Wear Store are OPTIONAL!

Students may wear these shirts, on house meeting days, with their SPN gym sweatpants or SPN gym shorts (during summer uniform only).

New students will find out what house they are in the first week of school!

We will open the Spirit Wear Store again before Christmas with more items to purchase!

ST. PHILIP NERI USED UNIFORM EXCHANGE

3-5 PM DROP OFFS AND SALES
FIRST TUESDAY OF THE MONTH
SPN BASEMENT NEXT TO MUSIC ROOM

PLEASE USE THE FRONT DOORS OF THE SCHOOL TO ENTER.
THE USED UNIFORM EXCHANGE IS ON THE BASEMENT LEVEL OF THE SCHOOL.

AS WE ARE IN SHORT SUPPLY OF POPULAR ITEMS,
YOU MAY WANT TO EMAIL FIRST TO SEE IF WE HAVE
WHAT YOU ARE LOOKING FOR!

EMAIL US:

spnuseduniforms@gmail.com

HOPE TO SEE YOU SOON!

| | |
|---------|------|
| Used | 10/1 |
| Uniform | 11/5 |
| Dates | 12/3 |
| | 1/7 |
| | 2/4 |
| | 3/4 |
| | 4/1 |
| | 5/6 |
| | 6/3 |

TUITION ASSISTANCE RAFFLE

WE ARE LOOKING FOR BUYERS AND SELLERS!

Get your tickets are sold every month for \$5/ticket. The ticket is good for the entire month, so you have 30-31 days/chances to win either \$100 or \$50! We have two sets of numbers (000-999) so there could be two winners each day!

To get your tickets,
or if you need more information,
please contact Mrs. Katie Spielman
at 410-859-1212 or email her at kspielman@spnmd.org.



School Apparel



ST. PHILIP NERI SPIRIT WEAR SALE 2024

St. Philip Neri School Spirit wear is available for purchase beginning Sunday 8/18/24 until Tuesday 9/3/24. The store will close on 9/3/24, so be sure to order now! Orders can be paid by credit card on-line. The school will make an announcement when the apparel is ready for pick up at the school approximately 2-3 weeks after the store closes.

Please contact Ms. Amy Sewell with any questions - asewell@spnmd.org - 410-859-1212 ext. 2107.

Go to the online store at <https://stphilipneriapparel24.itemorder.com/>

Online Store Deadline: Tuesday September 3rd, 2024 (11:59pm EDT)

Port Authority Youth Team Jacket



Port Authority Team Jacket



Port & Company Youth Core Fleece 1/4-Zip Pullover Sweatshirt



Note: Can Be Worn in Lieu Of SPN School Sweater

Port & Company Core Fleece 1/4-Zip Pullover Sweatshirt



Note: Can Be Worn in Lieu Of SPN School Sweater

Port & Company Youth Essential Tee



Port & Company Essential Tee



Port & Company Youth Long Sleeve Core Cotton Tee



Port & Company Long Sleeve Essential Tee



Port & Company Youth Core Fleece Pullover Hooded Sweatshirt



Port & Company Essential Fleece Pullover Hooded Sweatshirt



Port & Company Youth Essential Tee *Basic Shirts*



8 Colors

Port & Company Essential Tee *Basic Shirts*



8 Colors



PROPST & SONS SPORTS

Custom Screen Printing & Embroidery * Team Sports Uniforms & Equipment
Corporate Apparel * Promotional Items & Ad Specialties * Varsity Jackets

Visit us on the web at: www.propstandsons.com * Phone: 410-761-9571 * Fax: 410-761-2434
107 Mountain Road, Suite M * Pasadena, Maryland * 21122

Like & Follow us! We keep our feet moving, do you? facebook.com/teampropst [@teampropst](https://twitter.com/teampropst)

St. Philip Neri School - Spirit Nights 2024-2025



Italia's Corner Cafe
Burwood Village Center
7089 Baltimore Annapolis
Bld., Suite F
Glen Burnie, MD 21061

1st Thursday of the month

4:00 pm - 8:30 pm

Thurs., Sept. 5
Thurs., Oct. 3
Thurs., Nov. 7
Thurs., Dec. 5
Thurs., Jan. 2
Thurs., Feb. 6
Thurs., Mar. 6
Thurs., Apr. 3
Thurs., May 1
Thurs., June 5
Thurs., July 3
Thurs., Aug 7

Please mention SPN when you order for dine-in or carry-out. The Italia's Corner cashier will put all receipts in a basket; SPN will earn 10% back on the total.



Primanti Bros.
Restaurant & Bar
996 Corporate Boulevard
Linthicum, MD 21090

All Day Long
11:00 am - 11:00 pm

Wed., Sept. 11
Wed., Oct. 16
Wed., Dec. 18
Wed., Mar. 19
Wed., May. 14

SPN earns 20% back when you use the code **DINE2DONATE** for online orders or by showing the [FLYER](#) in the restaurant.



Bubba's 33
7305 Ritchie Highway
Glen Burnie, MD 21061

All Day Long
11:00 am - 11:00 pm

Tue., Sept. 17
Tue., Nov. 12
Tue., Feb. 11
Tue., Apr. 15

Please show the [fundraiser flyer](#) to your server or mention the fundraiser. SPN will earn 10% back on the food sales. Good for dine-in or carry-out



Chick-fil-A
Centre at Glen Burnie
6709 Ritchie Highway
Glen Burnie, MD 21061

4:00 pm - 8:00 pm

Mon., Sept. 23
Mon., Nov. 18
Mon., Jan. 13
Mon., Apr. 7

Mention our school to the cashier inside or at the drive-thru to earn 15% of the total for SPN. Mobile orders do not count toward the fundraiser.



Panda Express
6620-A Ritchie Hwy.
Glen Burnie, MD 21061

All Day Long
9:30 am - 11:30 pm

[Wed., Oct. 23](#)
Code 376230

[Wed., Dec. 11](#)
Code 376231

[Wed., Jan. 29](#)
Code 376232

Order online and enter the fundraiser code listed above OR show the flyer in the restaurant for SPN to earn 20% of your order total.



Chipotle
920 Cromwell Park Dr
Ste 101
Glen Burnie, MD 21061

4:00 pm - 8:00 pm

Tues., Oct. 8

ORDER ONLINE FOR PICKUP USING CODE
AB48F78

OR SHOW [THIS FLYER](#) IN THE RESTAURANT for SPN to earn 25% of your order total.

Child Nutrition Program/St. Philip Neri School

August/September 2024 Lunch Menu

| Monday | Tuesday | Wednesday | Thursday | Friday |
|---|---|---|---|---|
| Aug. 26 First Day of School Early Dismissal 12:15pm | 27 Chicken Patty Sandwich Baked Beans Fresh Carrots Fruit | 28 Mac & Cheese Dinner Roll Green Beans Fresh Carrots Fruit | 29 Chicken Drumstick Dinner Roll Celery w/Ranch Fresh Carrots Fruit | 30 Early Dismissal 12:15pm |
| Sept. 2 Labor Day No School | 3 Chicken Quesadilla Salsa Cup Green Beans Fresh Carrots Fruit | 4 Chili Bowl w/Rice Cherry Tomatoes with Ranch Fresh Carrots Fruit | 5 Popcorn Chicken Dinner Roll Vegetarian Beans Fresh Carrots Fruit | 6 Mozzarella Cheese Sticks Marinara Cup Raw Broccoli w/Ranch Fresh Carrots Fruit |
| 9 Teriyaki Potstickers Vegetable Fried Rice Fresh Carrots Fruit | 10 Sweet & Sour Meatballs Fritos Broccoli w/Ranch Fresh Carrots Fruit | 11 Strawberry/Banana Yogurt Mozzarella Cheese Stick Apple Cinnamon Bar Cherry Tomatoes w/Ranch Fresh Carrots Fresh Fruit | 12 Crispy Chicken Tender Salad w/Romaine and Ranch Dressing Tostitos Fresh Carrots Fruit | 13 Cheese Pizza Celery & Cauliflower w/Sun Butter Cup Fresh Carrots Fruit |
| 16 Popcorn Chicken Fritos Sunshine Carrots Fruit | 17 Meatballs in Marinara Sauce Garlic Bread Stick Celery with Sun Butter Cup Fresh Carrots Fruit | 18 Chicken Tenders Fritos Baked Beans Fresh Carrots Fruit | 19 Taco In A Bag Salsa Cup Corn Fresh Carrots Fruit | 20 Mozzarella Cheese Sticks Marinara Sauce Cup Baked Beans Fresh Carrots Fruit |
| 23 Chicken Drumstick Fritos Corn Fresh Carrots Fruit | 24 Rotini with Meat Sauce Garlic Bread Stick Broccoli w/Ranch Fresh Carrots Fruit | 25 Crispy Chicken Sandwich on Pretzel Roll Baked Beans Fresh Carrots Fruit | 26 Cheese Pizza Celery Sticks w/Sun Butter Cup Fresh Carrots Fruit | 27 Sun Butter & Jelly Sandwich Cherry Tomatoes w/Ranch Fresh Carrots Fruit |

Student's may take 3 out of the 5 meal components
 Required to take a FRUIT and/or VEGETABLE Fresh
 1% White Milk or Non-Fat Chocolate Milk

Offered Daily: Milk: 1% White, NF Chocolate
 Fruit & Vegetables may include: apples, oranges, bananas,
 seasonal fruits, carrots, celery, broccoli, cauliflower, tomatoes,
 side salads & seasonal veggies

Menu subject to change without notice.



Mrs. Sue Wenzlick

Monthly Parent Newsletters are written by Mrs. Sue Wenzlick

Mrs. Wenzlick has been part of St. Philip Neri School since her children started attending in 1999. Not only has she been part of the school, she has also been a member of the SPN Parish her entire life! She played the piano for many church Masses! She is currently the Development Director at SPN.



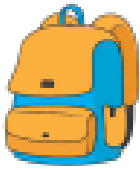
Mrs. Wenzlick has done a variety of jobs during her time at SPN School: substitute teacher, room mom, HSA board member, Santa's Secret Workshop coordinator, and Talent Show coordinator.

In 2009 she was hired as one of the Middle School Math teachers. Throughout her career she played the piano for Christmas Concerts and school Masses, and taught 8th Grade Religion and Primary Music before she landed the job as the Development Director. This job entails raising money for the school, heading up the financial aid committee, enrolling students, updating the website, and sending out parent newsletters.

In 2020 she decided to move to Florida. She tried to retire but Mrs. Daley convinced her to remain on as the Development Director and hired Ms. Amy Sewell to take over enrollment. She loves to fly up to Maryland and run events (purse bingos, golf tournament, Santa's Secret Workshop) for SPN! Mrs. Wenzlick loves her part-time job for SPN and loves seeing the smiling faces of our students!



St. Philip Neri School September 2024

| Sun | Mon | Tue | Wed | Thu | Fri | Sat |
|---|--|---|--|---|---|--|
|  | | | | 29 August <i>School Mass 9am (All Grades)</i> Back to School Night 5:00 - 6:30 pm | 30 August House Kick-Off 12:15pm Dismissal | 31 August |
| 1 | 2 NO SCHOOL Happy Labor Day | 3 Spirit Wear Order Deadline | 4 | 5 <i>School Mass 9am (All Grades)</i> Italia's Corner Spirit Night 4-8:30pm CHARLESTON WRAP FUNDRAISER KICK-OFF | 6 Band Demo (Grades 4-8) Parents Night Out Sponsored by Girl Scouts 6-9pm | 7  |
| 8 YOUTH MASS 5:00 p.m. | 9 Chorus 3-4:30pm | 10 | 11 Primanti Bros. Spirit Night 11am-11pm | 12 <i>School Mass 9am (PK - Grade 3)</i> | 13 | 14 Outside Event - Nun Run |
| 15 | 16 Chorus 3-4:30pm | 17 Bubba's 33 Spirit Night 11am-11pm | 18 | 19 <i>School Mass 9am (Grades 4 & 5)</i> | 20 House Color Day <i>(wear house color w/ gym shorts/pants)</i> | 21 |
| MAP Testing Week | | | | | | |
| 22 | 23 Chorus 3-4:30pm Chick-fil-A Spirit Night 4-8pm | 24 Early Childhood Bake Sale | 25 | 26 <i>School Mass 9am (Grades 6-8)</i> | 27 Spirit Wear Day ANNUAL FUND PURSE BINGO Doors open at 5:30 Bingo at 7pm CHARLESTON WRAP ORDERS DUE | 28 LINTHICUM COMMUNITY PARADE & FAIR PARADE 9am FAIR 10-3pm |
| 29 St. Clement Parish Fall Festival 11am-3pm | 30 Chorus 3-4:30pm JOE CORBI'S PIZZA FUNDRAISER KICK-OFF |  | | | | |

Weather-Related School Closings

If AA County Schools Close for the day, SPN will also be closed. For early closings, SPN closes the same time as AA County. In the event of a 2-hour delay, PK students may bring a packed lunch and stay the rest of the school day.

Listen to WBAL Radio 1090, watch WBAL TV Channel 11, or check for an ALERT message. If schools are closed due to inclement weather, Extended Care is also closed.



St. Philip Neri School

**Nourishing the
Soul, Mind, and Body**

PREK 4 to GRADE 8

www.spnmd.org

410-859-1212

2024-2025 School Mass Calendar

All Masses start at 9 AM

| | | | |
|--------------|---------------------------------------|-------------|------------------------------------|
| August 29 | School Mass for all Grades | February 6 | School Mass for all Grades |
| September 5 | School Mass for all Grades | February 13 | School Mass for pre-K to Grade 3 |
| September 12 | School Mass for pre-K to Grade 3 | February 20 | School Mass for Grades 4 and 5 |
| September 19 | School Mass for Grades 4 and 5 | February 27 | School Mass for Grades 6 through 8 |
| September 26 | School Mass for Grades 6 through 8 | March 5 | Ash Wednesday Mass |
| October 3 | School Mass for all Grades | March 6 | School Mass for all Grades |
| October 10 | School Mass for pre-K to Grade 3 | March 13 | School Mass for pre-K to Grade 3 |
| October 17 | School Mass for Grades 4 and 5 | March 20 | School Mass for Grades 4 through 8 |
| October 24 | School Mass for Grades 6 through 8 | March 27 | School Mass for Grades 6 through 8 |
| October 31 | School Mass for any Grades | April 3 | School Mass for all Grades |
| November 7 | School Mass for all Grades | April 10 | School Mass for pre-K to Grade 3 |
| November 14 | School Mass for pre-K through Grade 3 | May 1 | School Mass for all Grades |
| November 21 | School Mass for Grades 4 through 8 | May 8 | School Mass for pre-K to Grade 3 |
| December 5 | School Mass for all Grades | May 15 | School Mass for Grades 4 and 5 |
| December 12 | School Mass for pre-K to Grade 3 | May 22 | School Mass for Grades 6 through 8 |
| December 19 | School Mass for Grades 4 through 8 | May 29 | School Mass for any grade |
| January 2 | School Mass for all Grades | June 5 | School Mass for all Grades |
| January 9 | School Mass for pre-K to Grade 3 | | |
| January 16 | School Mass for Grades 4 and 5 | | |
| January 23 | School Mass for Grades 6 through 8 | | |
| January 30 | School Mass for any Grades | | |

2024-2025 St. Philip Neri School Faculty

| | | | | |
|----------------|------------------------|--|--|--|
| PKA Teacher | Mrs. Susan Spitzer | sspitzer@spnmd.org | PASTOR - Father Richard Gray | |
| PKA Aide | Mrs. Caryn Hamlin | chamlin@spnmd.org | richard.gray@archbalt.org | |
| PKA Aide | Ms. Mia Tran | mtran@spnmd.org | PRINCIPAL - Mrs. Kate Daley | |
| PKB Teacher | Mrs. Carmie Buckey | cbuckey@spnmd.org | cdaley@spnmd.org | |
| PKB Aide | Mrs. Jeannie Carpenter | jcarpenter@spnmd.org | ASST PRINCIPAL - Ms. Rebecca Burch | |
| PKB Aide | Ms. Zoe Konstantoulas | zkonstantoulas@spnmd.org | rburch@spnmd.org | |
| Floating Aide | Mrs. Andrea Dantine | adantine@spnmd.org | ADMISSIONS DIR - Ms. Amy Sewell | |
| Primary Aide | Ms. Kathy Kazmierski | kkazmierski@spnmd.org | asewell@spnmd.org | |
| KA Teacher | Mrs. Heather Horton | hhorton@spnmd.org | DEVELOPMENT DIR - Mrs. Sue Wenzlick | |
| KA Aide | Mrs. Heather Hechmer | hhechmer@spnmd.org | swenzlick@spnmd.org | |
| KB Teacher | Ms. Karen Markiewicz | kmarkiewicz@spnmd.org | | |
| KB Aide | Mrs. Ashley Coleman | acoleman@spnmd.org | | |
| 1A Teacher | Mrs. Deborah Flynn | dflynn@spnmd.org | | |
| 1B Teacher | Mrs. Megan Hornberger | mhornberger@spnmd.org | | |
| 2A Teacher | Mrs. Melissa Johnson | mjohnson@spnmd.org | | |
| 2B Teacher | Mrs. Kaitlyn McCracken | kmccracken@spnmd.org | | |
| 2B Substitute | Mrs. Kathy Currie | kcurrie@spnmd.org | | |
| 3A Teacher | Mrs. Catherine Feeley | cfeeley@spnmd.org | | |
| 3B Teacher | Mrs. Summer Montgomery | smontgomery@spnmd.org | | |
| 4A Teacher | Ms. Ellen Lewis | elewis@spnmd.org | | |
| 4B Teacher | Ms. Michelle Novak | mnovak@spnmd.org | | |
| 5A Teacher | Mrs. Jennifer Bowser | jbowser@spnmd.org | | |
| 5B Teacher | Ms. Amanda Cosgrove | acosgrove@spnmd.org | | |
| 6A Homeroom | Ms. Megan Moxley | mmoxley@spnmd.org | | |
| 6B Homeroom | Mr. Tyree Scott | tscott@spnmd.org | | |
| 7A Homeroom | Ms. Susan DeLoach | sdeloach@spnmd.org | | |
| 7B Homeroom | Ms. Amanda Supplee | asupplee@spnmd.org | | |
| 8A Homeroom | Ms. Anna Schomaker | aschomaker@spnmd.org | | |
| 8B Homeroom | Mr. John Maranto | jmaranto@spnmd.org | | |
| Art Teacher | Mrs. Ashley Lines | alines@spnmd.org | | |
| Librarian | Mrs. Doreen Giordano | dgiordano@spnmd.org | | |
| K-2 Music/Comp | Ms. Amy Sewell | asewell@spnmd.org | | |
| 3-8 Music/Comp | Mr. Philip Lathroum | plathroum@spnmd.org | | |
| PE Teacher | Mr. Travis Bateman | tbateman@spnmd.org | | |
| P-4 Spanish | Mrs. Luz Morales | lmorales@spnmd.org | | |
| 5-8 Spanish | Ms. Susan DeLoach | sdeloach@spnmd.org | | |
| Resource | Mrs. Luz Morales | lmorales@spnmd.org | | |
| Resource | Ms. Ellen Piwko | epiwko@spnmd.org | | |
| Counselor | Mrs. Sue Porembski | sporembski@spnmd.org | | |
| 8 Latin | Ms. Susan DeLoach | sdeloach@spnmd.org | | |
| Technology | Mr. Matthew Pilkus | mpilkus@spnmd.org | | |
| Secretary | Mrs. Rachel Bruggy | rbruggy@spnmd.org | | |
| Business Mgr. | Mrs. Theresa Wellein | twellein@spnmd.org | | |
| Secretary | Mrs. Katie Spielman | kspielman@spnmd.org | | |
| Health Room | Mrs. Brandi Bush | bbush@spnmd.org | | |
| Extended Care | Mrs. Carla Ratliff | cratliff@spnmd.org | | |
| Maintenance | Mr. Joe Mosmiller | jmosmiller@spnmd.org | | |
| Maintenance | Mrs. Sue Roberts | sroberts@spnmd.org | | |
| Hot Lunch | Mrs. Nancy Reed | nreed@spnmd.org | | |
| Hot Lunch | Mrs. Theresa Novak | tnovak@spnmd.org | | |

MIDDLE SCHOOL SUBJECTS

| | |
|-------------|---------------------------|
| 6A Religion | Mr. John Maranto |
| 6B Religion | Mr. John Maranto |
| 6-1 ELA | Ms. Megan Moxley |
| 6-2 ELA | Ms. Ellen Piwko |
| 6A Math | Ms. Anna Schomaker |
| 6B Math | Mr. Tyree Scott |
| 6A Science | Ms. Amanda Supplee |
| 6B Science | Ms. Amanda Supplee |
| 6A SS | Ms. Anna Schomaker |
| 6B SS | Ms. Megan Moxley |
| 7A Religion | Ms. Susan DeLoach |
| 7B Religion | Ms. Susan DeLoach |
| 7-1 ELA | Ms. Megan Moxley |
| 7-2 ELA | Ms. Becky Burch |
| 7-1 Math | Ms. Anna Schomaker |
| 7-2 Math | Mr. Tyree Scott |
| 7A Science | Ms. Amanda Supplee |
| 7B Science | Ms. Amanda Supplee |
| 7A SS | Mrs. Kate Daley |
| 7B SS | Mr. Tyree Scott |
| 8A Religion | Mr. John Maranto |
| 8B Religion | Mr. John Maranto |
| 8-1 ELA | Ms. Megan Moxley |
| 8-2 ELA | Ms. E. Piwko/Ms. R. Burch |
| 8-1 Math | Ms. Anna Schomaker |
| 8-2 Math | Mr. Tyree Scott |
| 8A Science | Ms. Amanda Supplee |
| 8B Science | Ms. Amanda Supplee |
| 8A SS | Mr. John Maranto |
| 8B SS | Mr. John Maranto |

SPN Basketball Commissioner and Co-Commissioner

We are looking for volunteers to coordinate the 2024-2025 basketball season at SPN. This program is for students in our school as well as part of the parish. For more information about these positions, please email Shannon Coleman at scoleman02@gmail.com or call at 240-603-4992.

SPN SPORTS COMMITTEE PRESIDENT - Position OPEN!

The SPN Sports Committee is looking for an individual to fill our open President position. This is a great opportunity to guide and shape the sports program at St. Philip Neri. The role involves developing a strategy to grow the sports program, facilitating and coordinating consistent procedures and overseeing the sports budget.

Serving as President is a great way to earn your volunteer hours.

If interested, please reach out to a member of our Sports Committee for more information:

Emily Andrews: emilykayandrews@gmail.com (Secretary)

Caroline Giordano: caroline.d.giordano@outlook.com (CYO Basketball Commissioner)

Shannon Coleman: scoleman02@gmail.com (Intramural Basketball Commissioner)

Pat Walsh: walshpa95@gmail.com (Rugby Commissioner)

Erin Harriot: erin8317@msn.com (Soccer Commissioner)

Announcing the Fall Festival at St. Clement's Parish - this is our sister parish in Halethorpe.



St. Clement's Parish
FALL FESTIVAL
Sunday, Sept 29th
11 a.m. to 3 p.m.
FOOD & FUN FOR ALL AGES
CRAFTERS!! VENDORS!!!
Moon Bounce, Face painting
50/50 & Raffle Auction !!
Please join us for
Mass at 10 a.m.
just before the
Festival!



Parroquia de San Clemente
**Festival
de Otoño**
Domingo, 29 de
Septiembre
11 AM TO 3 PM
Evento para las familias y personas
de todas edades.
Habrá música, bailes típicos, muchos juegos para
los niños, subastas y comida de todo tipo
(Burgers, hot-dogs, pit-beef, pop-corns,
chicharrones, pupusas, sopes, elotes locos y
mucho más)

MEDICATION FORMS (REQUIRED FOR ALL STUDENTS)

The over-the-counter medication form and requirements have changed. All AOB schools will be required to utilize this form for the 2024-2025 school year with any student requesting the administration of OTC medications. Over-the-counter medications listed on the Consent for Administration of Over-The-Counter Medications Form will be dispensed only if BOTH the medical provider and the parent/guardian sign and date the form. We will not dispense over-the-counter medication without the signed consent on file. If you do not wish for your child to receive over-the-counter medication at school, please sign the form and check the box at the bottom indicating, "I do not wish my child to receive any over-the-counter medications at school." A medical provider does NOT need to sign the form if over-the-counter medication will not be given.

****This form MUST be completed for ALL students!**

If your child is to receive any over-the-counter medication that is NOT listed on the Consent for Administration of Over-The-Counter Medications Form, then you must complete The Maryland State School Medication Administration Authorization Form, which can be found on our website at <https://spnmd.org/forms-documents/>.

You may print these forms and return it to school, or it will also be sent home in the first Thursday Envelope.

Parents/guardians must hand deliver any over-the-counter medications directly to the Health Room. Over-the-counter medication must be brought to school in an original, unopened container and labeled with the student's name and homeroom. Students are not permitted to self-carry over-the-counter medications.

Please contact Ms. Brandi in the Health Room at (410)859-1212 x 2103 if you have any questions. Thank you!

LUNCH ACCOUNTS & MENU - AUGUST/SEPTEMBER

The student lunch price this year will be \$4.00. Parents/guardians are asked to put funds on their child's lunch account in PowerSchool (preferred). Check/Cash payments will also be accepted to put on a child's lunch account. Letters will come out soon from the Child Nutrition Office with information needed for the start of the school year. If you have any questions about lunch accounts, please contact Nancy Reed at nreed@spnmd.org.

PARENT-STUDENT HANDBOOK UPDATES

The Parent-Student Handbook for 2024-2025 will be sent home at the beginning of the school year, with an acknowledgement that will need to be signed and returned. The changes that have been made to the handbook for this school year can be found on our website at <https://spnmd.org/uniforms/>. The changes/updates are highlighted in yellow.





**SPN
Ice
Cream
Social**

Thanks to our
HSA for hosting
this annual event!



Congratulations to
Brianna and Julian!
They have a new baby brother!

Welcome to the SPN family,
Liam! →
God bless you!



(left and below)

We love when our alumni send
in pictures of their first day
of school. We wish them the
best of luck in this next
journey in life!



PARISH EVENTS AND INFORMATION

<http://www.stclementandstphilipneripastorate.org/>



SPN PARISH MASS SCHEDULE

WEEKEND MASSES

Saturday Mass at 5 PM

Sunday Masses at

8:00 AM, 9:30 AM, and 11:30 AM

DAILY MASS

Thursday at 9:00 AM

Mon, Tues, Wed, Fri at 6:30 PM

CONFIRMATION CLASSES will begin on September 22. For more information, contact Hunter at hluers@spsmd.org.

O.C.I.A. CLASSES will begin September 18. If you are interested in joining the Catholic Church, please attend these classes on Wednesday evenings at 7:15 PM. For more information, please contact Tim Feeney at tfeeney@spsmd.org.

SPN's MOM'S GROUP meets 2nd Monday of the Month at 7 PM. For more information, contact Elizabeth at eadalasio@gmail.com.

DAYCARE ASSISTANT NEEDED

Monday through Friday from 2:45-6 PM.

Must be 18 years of age or older.

Contact Carla at 667-289-7112.

Celebrate the Opening of Our *Perpetual Adoration Chapel*



"Be Awakened to Relationship"

*Experience the profound beauty of
adoration. Families welcome!
Flexible days & times
that fit your schedule.
Scan QR code to sign up.*

Walking with PURPOSE

Enabling women to know Christ through Scripture

Come join the women of St Philip Neri & St Clement in a Catholic Bible Study called Walking with Purpose!

You can sign up for either...

Wednesday mornings from 9:30AM-11AM

or Wednesday evenings from 7:15PM-8:45PM

We will start September 11th!

For more information, contact the parish office at 410.859.0571 or email theresaewaggoner@gmail.com

There are 3 sessions to choose from:

Opening your Heart...the starting point

Discovering Our Dignity...women of the Bible

Living in the Father's Love...the gospels reveal God's love

Find out more at walkingwithpurpose.com



"WWP allows me to grow as a daughter of Christ... versus as a mother, wife, etc."

*This is my third year doing WWP and each year the women seem to be written specifically for me and what I am currently going through. WWP allows me to grow as a daughter of Christ and as a person in my own right. (versus as a mother, wife, etc!)

-Participant at Our Lady of the Fields Catholic Church in Millersville, MD

UPCOMING PARISH and OUTSIDE OF SPN EVENTS



(How about let us enjoy the kids for a while)

Monthly Parents Night Out!

- Beginning September 6, 2024
- First Fridays, 6pm – 9pm
- Monthly through June 6, 2025
- St Philip Neri Parish Center

All children ages 4 – 12 are welcome.

Includes dinner, snacks, crafts, games, and movies.

The cost is \$10 per child per month. Pre-registration is required each month with attendance.

Adult SPN Girl Scout volunteers are chaperoning.

Email Maryann Kulesz at rakak@aol.com for registration form or questions.

Yard Sale & Car Wash

Join St. Philip Neri & St. Clement
Saturday, October 12th 8am-12pm

Rain or Shine

Event held on
St. Philip Neri's
Back parking lot



& Car Wash

Are you still cleaning out those garages and basements?
Fall is the perfect time to sell your stuff, and put money in your pocket.

Rent your space TODAY!

\$20 per space 14x16 (2 parking spaces).

Tables are available to rent for \$10, must reserve in advance.

Commercial Vendors are Welcome.

If you would like to reserve your space, please contact

dscott@spnmd.org 410-859-0571, ext. 3101

Set up starts at 6am, must be set up by 7:30 am

St. Philip Neri Catholic Church - 6405 South Orchard Road, Linthicum MD 21090

Little Sisters of the Poor NUN RUN Mile Run/Walk September 14, 2024

Sign Up Today and Join in the Fun!



Registration is open of the Little Sisters of the Poor NUN RUN 5K and 1 Mile Run/Walk - BALTIMORE! This year's event will take place on September 14, 2024 at Cathedral of Mary Our Queen. Whether you're an experienced runner or just starting out, this is the perfect opportunity to challenge yourself, meet new people, and have fun! We can't wait to see you at the starting line.

Cathedral of Mary Our Queen - 5200 N. Charles Street - Baltimore, MD 21210

Sign up at the link below:

<https://runsignup.com/Race/MD/Baltimore/LittleSistersofthePoorNunRun5Kand1MileRunWalk?rsus=200-500-322cb9c5-69bf-4ab3-8702-319d2977875e>

ST. PHILIP NERI
TUITION RAFFLE

Supporting the SPN H.S.A.



St. Philip Neri
Nourishing the Soul, Mind & Body

..... Top Prize

ONE FULL YEAR OF TUITION*

VALUED @ \$7,175

.....
Or \$2,500 Cash Option

Ticket Price:

\$25

3 for \$60 | 5 for \$100

Drawing Date:

May 2025

@ St. Philip Neri School

ORDER TICKETS ONLINE @

>>> forms.diamondmindinc.com/stphilipneri/HSATuition <<<

For more information, please email SPNHSAMD@gmail.com.

*Minimum of 400 tickets must be sold to award the St. Philip Neri Tuition prize, or top prize reverts to \$2,500 cash option. Tuition prize is transferrable and must be redeemed during the 2025/2026 school year. Winner is responsible for all taxes, please consult a tax professional.

Sponsor & Proud Supporter:

TOMAS BROTHERS
Home Improvement

TomasBrothers.com



**Show your school spirit!
Walk with SPN in the
Linthicum Parade**

When: Saturday, September 28, 2024

Where: Lindale Middle School
415 Andover Rd, Linthicum MD 21090

Time: 8 am – Parade will start at 9 am
We have been asked to arrive early!

Wear: Your 2024 SPN Spirit shirt or
any Navy blue SPN spirit shirt

Join us at the Linthicum Fair!

Bridging the Community



35th Annual Linthicum Community Fair

Saturday, September 28th

St. John Lutheran field
Parade 9am Fair 10am-3pm

*Fun, Food, Games, Rides,
Crafts, Entertainment*

Benefits: Hope for All & NCEON

For everyone's safety please leave furry friends at home

linthicumfair@gmail.com 410-454-3019

The Linthicum Community Fair is from 10 AM to 3 PM on
St. John Lutheran's field at the corner of Maple Road and Hammonds Ferry Road
**We would love to get a picture of everyone on the steps of Lindale Middle School before
the parade starts. Bring your best smiles! Hope to see you there!**



We will be collecting canned goods to support the
NCEON (North County Emergency Outreach Network)
food pantry. Please bring in your canned good
donations the week of September 23-27.
Place them in the box in the school lobby.
Let's fill the NCEON truck!

A shuttle bus will be provided for parade participants. Please park at Lindale Middle School. When you are ready
to head home, jump on the shuttle bus at the gate at St. John's field and they will take you back to your vehicle!
Shuttle bus will operate from 10 AM to 3 PM.



Hosted by
St. Philip Neri School

**Friday,
September 27, 2024**

**It's your chance to win Kate Spade, COACH,
Michael Kors, Vera Bradley, and other purses!**



**20 Games
of Bingo**

**3 Specials,
2 Raffles,
and a cash
50/50**

**St. Philip Neri
Msgr. Zorbach Hall
6405 S. Orchard Rd.
Linthicum, MD
21090**

**Doors open at 5:30 PM. Bingo starts at 7 PM.
Great food will be available to purchase!**

Due to space restrictions seating will be limited. Purchase your spot now!

Order online at: <https://forms.diamondmindinc.com/stphilipneri/bingo>

If you have a group, please indicate who you would like to sit with at this event.

COST IS \$25!

This cost is for the 20-game bingo packet which does not include the specials, raffles or 50/50. No physical tickets will be delivered. Your name will be placed on the players list.



**Email
Sue Wenzlick
with any questions at
swenzlick@spnmd.org.**

**Contact Sue for
cash/check order form!**

