



2023-2024 School Year



**Official PBIS Silver School & 2022 Kindness Certified School
2021-2023 Top Work Places – 3 years in a row**

Social Media

Facebook:

St. Philip Neri Catholic School

Instagram:

Spnjesters

February 2, 2024

INFORMATIONAL FLYERS INCLUDED IN THIS NEWSLETTER:

SCHOOL EVENTS – HSA Tuition Raffle

PARISH EVENTS – HOPE For All Fundraiser (2 pages), Youth Mass (2/4), Youth Ministry Super Bowl Night (2/11), and SPN Youth Rugby (Register now – starts 3/12)

Looking Ahead

- February 3 and 4 HOPE For All Collection after all Parish Masses
- February 4, 2024 Youth Mass at 5 PM
- February 5, 2024 Used Uniform Exchange from 3-5 PM
- February 8, 2024 Out-of-Uniform Day benefit for 8th Grade graduating class
- February 8, 2024 School Mass for pre-K to Grade 3 at 9 AM
- February 13, 2024 Class of 2024 Bake Sale
- February 13, 2024 Pancake Supper sponsored by the Parish from 4:30-6:30 PM
- February 14, 2024 Ash Wednesday Mass - Distribution of Ashes at 9 AM
- February 14, 2024 HAPPY VALENTINE'S DAY
- February 15, 2024 School Mass for Grades 4 and 5 at 9 AM
- February 16, 2024 HSA's Joe Corbi's Fundraiser – Orders Due
- February 16, 2024 Lenten Friday at SPN Parish
- February 19, 2024 NO SCHOOL - President's Day
- February 21, 2024 Spirit Day at Texas Roadhouse – any time
- February 22, 2024 School Mass for Grades 6 through 8 at 9 AM
- February 23, 2024 Lenten Friday at SPN Parish

St. Philip Neri School • 410-859-1212 • office@spnmd.org • spnmd.org

Mission Statement:

St. Philip Neri School is dedicated to fostering Catholic faith and academic excellence. Under the guidance of the Holy Spirit, students are provided the opportunity to develop their gifts and talents while striving to become active members of their church. A foundation for future success and life-long learning is provided in partnership with the family, parish and school community.

FEBRUARY 3-4

HOPE For All Collection
after all Masses!

See pages 20-21
for more information on
this collection for those
less fortunate.



FEBRUARY 5

Used Uniform Exchange
3-5 PM

ST. PHILIP NERI USED UNIFORM EXCHANGE

2023-2024 Dates
10/2, 12/4, 2/5,
4/8, and 6/3

SPN
Basement
next to
the Music
Room

3-5 PM DROP OFFS AND SALES

PLEASE USE THE FRONT DOORS OF THE SCHOOL TO ENTER.
THE USED UNIFORM EXCHANGE IS ON THE BASEMENT LEVEL OF THE SCHOOL.

AS WE ARE IN SHORT SUPPLY OF POPULAR ITEMS,
YOU MAY WANT TO EMAIL FIRST TO SEE IF WE HAVE
WHAT YOU ARE LOOKING FOR!

HOPE TO SEE YOU SOON!

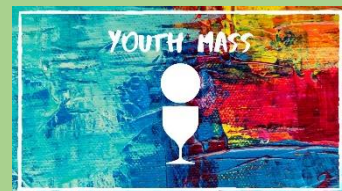
EMAIL US:

spnuseduniforms@gmail.com

FEBRUARY 4

Youth Mass at 5 PM

See pages 10-11



FEBRUARY 8

School Mass for pre-K to Grade 3

Please join us in the church!

All are welcome!

Mass starts at 9 AM.



FEBRUARY 8

Out-of-Uniform Day

\$3 - CASH ONLY

Proceeds to benefit the Class of 2024 to
defray the costs of end of the year activities!



NO PARENT NEWSLETTER NEXT WEEK

FEBRUARY 13

Class of 2024 BAKE SALE

Delicious baked items will be on sale in the school lobby by our 8th grade students!



FEBRUARY 14

ASH WEDNESDAY MASS

9 AM in the church

Mass for all of our faculty & students!
All are welcome!



FEBRUARY 15

School Mass for Grades 4 and 5

Please join us in the church!

All are welcome!

Mass starts at 9 AM.



School Mass
at 9 AM
in the church.

All are welcome!

FEBRUARY 16

Joe Corbi's Orders are Due

Thank you for your support of this Home and School Association fundraiser!



FEBRUARY 19

NO SCHOOL



Congratulations to one of our staff members on winning the SPN Jester Spirit Award. Each week we honor a different faculty or staff member for being awesome!

**Congratulations to
Mrs. Summer Montgomery!**

**WAY TO BE AWESOME,
MRS. MONTGOMERY!**



Mrs. Montgomery is pictured here with her son, Michael!

**FINANCIAL ASSISTANCE AVAILABLE AT
ST. PHILIP NERI SCHOOL FOR THE 2023-2024 SCHOOL YEAR
DEADLINE IS FEBRUARY 29, 2024!**

Financial assistance is available from several sources:

- 1) Archdiocese of Baltimore (AOB)
- 2) St. Philip Neri Parish
- 3) St. Philip Neri School
- 4) Applicant's Parish*



Anyone requesting financial aid from the AOB, SPN Parish or School:

SPN direct link: <https://online.factsmgt.com/signin/3QGNP>

This week only, save \$10 on all St Philip Neri crewneck sweatshirts! This includes styles from Champion, Bella+Canvas and JustHoods! →

FRIDAY, MARCH 1

As listed on our school calendar there is NO SCHOOL on Friday, March 1, due to the AOB Professional Day.

We are hosting this event so there will **NOT** be extended care on this day.

An advertisement for St Philip Neri crewneck sweatshirts. On the left, the text 'ST PHILIP NERI ALL CREWS \$10 OFF' is displayed in large, bold, white letters against a dark background with a repeating 'SALE' pattern. Below this, the '1ST PLACE Sportswear' logo is visible. On the right, a dark blue crewneck sweatshirt is shown with the text 'ST PHILIP NERI JESTERS' printed on it in yellow and white. At the bottom, the text 'SHOP AT 1STPLACE.SALE/43164' is written in white. A small note at the bottom right says 'Pricing Valid Through 2/24'.

LENT STARTS ON WEDNESDAY, FEBRUARY 14

4 Ways to Observe Lent

Lent is a season of focus and preparation. It aligns our hearts with God's heart as we approach Easter.

The following are just a few ways to focus and prepare.



Give It Up

Consider giving up something that distracts from your important relationships: like too much time on Twitter or Clash of Clans.

Maybe cut out screen usage for several hours a day.

Take a day of true rest: let go of toil for 24 hours.



Plug In

Consider adding in something that helps you connect to God.

Read a book of the Bible, a devotional, or practice Lectio Divina on a daily basis.



Serve

Start a new routine of service.

Volunteer regularly as an academic mentor, step up to volunteer in a local church, or visit a nursing home.



Share It

Make it a communal event.

Share your Lent practices with others via a small group and/or attending worship.



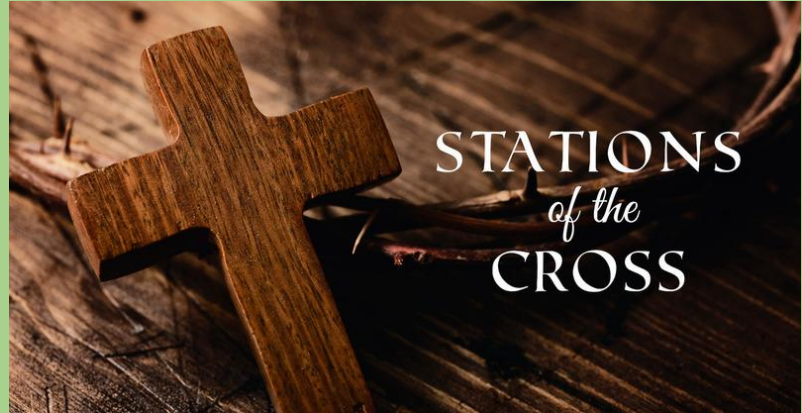
Pancake Supper - February 13

4:30 - 6:30 PM in the Parish Hall

\$5/pp and free to those under the age of 3

FRIDAYS DURING LENT

Fridays in Lent - February 16
February 23
March 1
March 8
March 15
March 22



Confessions from 5-6 PM

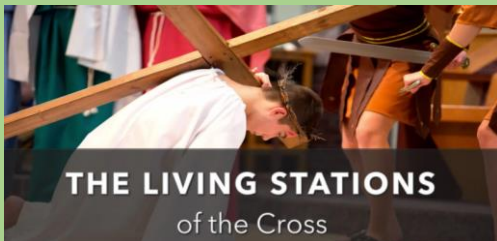
Mass at 6 PM

Bread and Soup Supper in the gym (free) from 6:30-7:30 PM

Stations of the Cross at 7:30 PM

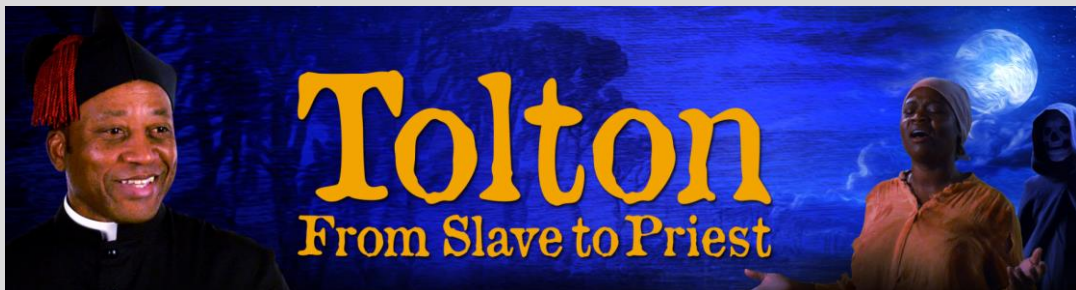
March 15 and March 22 at 7:15 PM - Guest Speakers:

Jimmy Depher II and Katherine Mosco
Followed by Stations of the Cross



March 29 at 7:30 PM

Living Stations of the Cross acted out by the youth of the parish.



Wednesday, March 20 at 7:15 PM at St. Philip Neri

A play titled "From Slave to Priest" about the life of Father Augustus Tolton, the first African-American priest in the United States. He was born in 1854 and was ordained a priest in 1886. The event will be free-of-charge but a free-will offering taken. This play will be put on by the St. Luke Productions. For a trailer: <https://www2.stlukeproductions.com/dramas/tolton>

PARISH EVENTS AND INFORMATION

<http://www.stclementandstphilipneripastorate.org/>

STAY INFORMED AT SPN PARISH

We will be keeping the SPN parish community up to date with changes as we receive them through the following means:

Facebook

<https://www.facebook.com/st.philipneriparish/>

Website

stclementandstphilipneripastorate.org

Email

<https://flocknote.com/>

Text Message

<https://flocknote.com/>

My Parish App

On your phone, go to the App store and search 'myparishapp'. Download and search for St. Philip Neri. From here, you can get readings, prayers, homilies, live mass, and other valuable information daily.

WEEKEND MASSES

Saturday Mass at 5 PM

Sunday Masses at 8:00 AM, 9:30 AM, and 11:30 AM

DAILY MASS

Thursday at 9:00 AM

Mon, Tues, Wed, Fri at 6:30 PM



The Pantry at St. Philip Neri

~Sharing the Love of Jesus~
6405 S. Orchard Road
Linthicum MD 21090
443-312-9919

Pantry Distribution 2024

January 18th

*February 22nd

March 21st

April 18th

May 16th

June 20th

July 18th

*August 22nd

September 19th

October 17th

November 21st

December 19th

St. Philip Neri Catholic Church has partnered with the Anne Arundel County Food Bank to offer supplemental food at no cost to those needing assistance. The Pantry is open the 3rd Thursday of each month with pick up available between 11:00 - 1:00 p.m. OR 5:30 - 6:30 p.m.

* Distribution for February and August will be on the 4th Thursday due to changes in the food delivery schedule.

Clients must be residents of Anne Arundel County and be able to provide proof of residency. If you do not live in Anne Arundel County and need supplemental food assistance, we will help you find resources in your area. You may also call the Maryland Food Bank at 410-737-8282 or visit their website at www.marylandfoodbank.org.

Outreach Donations

Currently we are only accepting donations that we have listed below, please do not donate anything else.



You may donate the following to:

Children items- Mary's Center, 410-761-8082
898 Airport Park Rd #109, Glen Burnie, MD 21061

Housewares & furniture- HOPE for ALL, 410-766-0372
122 Roesler Rd, Glen Burnie, MD 21060

Clothing and miscellaneous- Value Village, 410-789-8621
5604 Ritchie Hwy, #3 Brooklyn Park, MD 21225

As we continue to serve the poor and homeless, we only need and have room for what is listed.



- Men's jeans 32-36
- Sweatshirts-men/women
- Sweat pants men/women
- Women's leggings Sm-Med
- Women's sport bras

- Easy open beef ravioli/any protein
- Cheese or peanut butter crackers
- Fruit cups/apple sauce
- Chips/salty snacks
- Cookies/sweet snacks
- Disposal wash cloths
- Toilet Paper

May God bless all of you



Last Friday was PURPLE FRIDAY!
Students showed their support of the Ravens this day!





It's Purple Friday!





SPN Robotics Teams at the McDonough competition last Saturday!



Angelique participated in the Girls Love Pink Invitational benefiting the Susan G. Komen Foundation. She competed as a level 4 gymnast and won the all-around for her age group with a score of 37.0! Way to go, Angelique! ↓



← Matthew and Maverick competed in the same wrestling tournament and took home medals! Congratulations!



SPN Annual Fund Purse Bingo



The Annual Fund Purse Bingo was a huge success! We had 400 participants that filled the hall! Thanks to all that came to play!



SPN Annual Fund
Purse Bingo

12

12





Catholic Schools Week began with Mass on Sunday! Thank you Father Andy for a wonderful Mass and to our SPN Chorus for singing beautifully!



Catholic Schools
United in Faith and Community

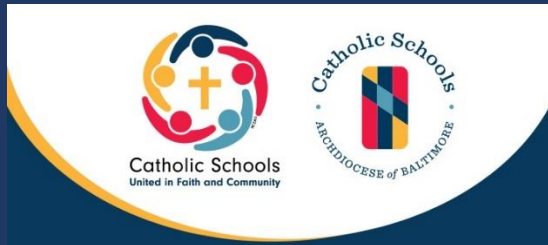




CATHOLIC SCHOOLS WEEK 2024
JANUARY 28 - FEBRUARY 3, 2024
#ArchBaltCSW24

MONDAY UNIFORM:
Favorite Holiday for Pre-K to
5th Grade Students





CATHOLIC SCHOOLS WEEK 2024
JANUARY 28 - FEBRUARY 3, 2024
#ArchBaltCSW24

MONDAY UNIFORM: Decades Day for Middle School Students



← Our wonderful administration representing their favorite holiday!
Mrs. Sue Porembski,
Ms. Rebecca Burch, and Mrs. Kate Daley



On Monday evening, our amazing Drama Jr students performed their showcase in front of family and friends. They did an amazing job! We are so proud of each and every one of them! Special THANKS to all the parent helpers, peer leaders, Ms. Amy, Ms. Carmie, and Ms. Rachel for all their hard work this year!



Bravo to our awesome Drama Jr Cast! Great job on your showcase!



Our very talented Gabriella represented Dance Masters of America as Junior Miss Dance of America at Chapter 4 in Michigan last weekend! Nice job, Gabriella!





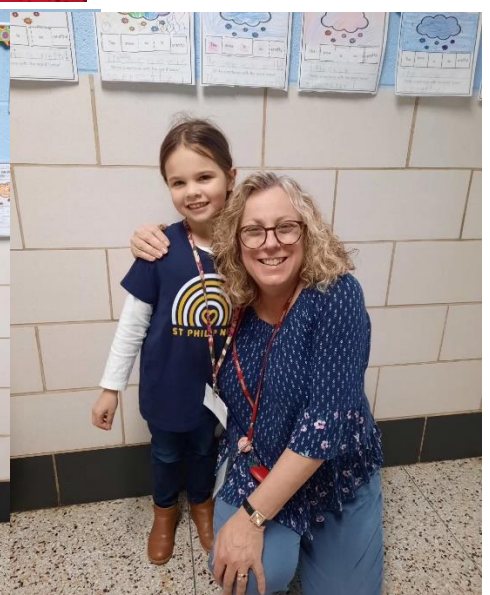
Caleb is a United States Coast Guard Boatswain Mate, and Christopher is a US Capital Police officer. Their Dad was in the USCG from 2000-2008.



Savannah dressed up as Ms. Sheri!
↓



←
Rose dressed up as her Dad, Mr. Maranto!
←





The St. Philip Neri Jesters Cool Schools Plunge Team! Over 90 students, faculty, and parents took the plunge for Special Olympics Maryland! Our team raised over \$16,400 for SOMD Athletes!





HOPE For All has spent the past 20 years serving people who need a helping hand in Anne Arundel County. In that time, we have provided furniture and household items to more than 4,000 families, and clothing to thousands more.

We'll be in the back parking lot before and after Masses on Feb. 3-4 to collect the following items for our clients:

New

- Men's Underwear (Sizes M-L-XL-2XL-3XL)**
- Socks for Children and Adults (All sizes)**

New or Gently Used:

- Twin Comforters**
- Bath Towels**
- Pizza Pans**
- Baking Sheets**

Thank you for supporting our ministry! If you'd like to volunteer or get more information, go to www.hopeforall.us.

Collecting Saturday, 2/3 from 4:30-6:30 p.m. and Sunday 2/4 from 7:30 a.m. to 1 p.m.





Offering life's essentials today... to give HOPE for a self-sufficient tomorrow

HOPE For All is a Christian ministry whose mission is to provide basic furniture, household items, and clothing to people in our community who are without the financial means to meet their basic needs. We strive to offer stability to their daily lives and hope for their future.

- **Through community donations of goods, HOPE For All offers clients the essentials necessary to create a healthy home.**
- **For 19 years, we have been a unique resource in our area for those transitioning from homelessness, or just in need of a helping hand.**
- **We currently partner with 70+ nonprofits, government agencies, and churches who refer families and individuals to us for assistance.**

Our Programs

Turning Houses Into Homes

Deliver furniture and other essential items to more than 300 households each year

Head to Toe

Provide clothing to Anne Arundel County Public School children

Next Step Clothing

Provide clothing to people in crisis

Want to Donate?

- We accept donations on Tuesdays and Wednesdays from 9:30 a.m. to 3:00 p.m.
- Furniture donations can be scheduled for pick up
- Financial donations can be mailed or given online through our website

Want to Volunteer?

Individuals, weekly: Tuesday through Thursday 9:30 a.m. to noon and 12:30 to 3:00 p.m.

Groups: Saturdays from 9 a.m. to noon.

Contact us to schedule

We are located at

122 Roesler Road
Glen Burnie, MD 21060

Our mailing address is:

P.O. Box 1548
Glen Burnie, MD 21060

www.hopeforall.us | info@hopeforall.us | 410-766-0372

St Philip & St Clement

Youth Mass

**COME AND JOIN US FOR THE
NEXT YOUTH EVENT**

Sunday, February 4th @ 5 PM

All are welcome!

MIDDLE SCHOOL : Hilary hfbateman@gmail.com

HIGH SCHOOL : Matteo matteo.santi-amantini@archbalt.org

YOUNG ADULTS: Catherine cattirsch2012@gmail.com



YOUTH MINISTRY SUPER BOWL NIGHT!



SUNDAY, FEBRUARY 11 @ 5PM

**ST. CLEMENT PARISH
2700 WASHINGTON AVE,
HALETHORPE, MD 21227**

COME AND JOIN US TO WATCH THE GAME,
ENJOY FOOD AND FRIENDSHIP!
ALL ARE WELCOME!

FOR MORE DETAILS CONTACT - MATTEO

matteo.santi-amantini@archbalt.org

TAG RUGBY

St Philip Neri Spring Program



Boys and Girls, Ages 7 – 13

It's a two-hand tag game.

No experience is necessary!!!! Everyone will learn to run, pass, and kick.

Starts March 12

Practices – Tues & Thurs,
6:00 to 7:30 PM @ St Philip Neri fields

Registration fee \$25 payable to “St Philip Neri Youth Sports Account”



To Register, Contact Pat Walsh, 443-474-3254, walshpa95@gmail.com.

Parents and Other Adults – Every sport needs parent support. We need adults as asst. coaches, etc. If you're new to rugby, you'll learn along with your children.

Rugby in Maryland...

High Schools: includes Spalding & Mt. St. Joe & is an MIAA Varsity sport

Colleges: Towson, UMBC, Loyola, Maryland, Naval Academy, Salisbury, and more

...and the World

93 countries play rugby,

Rugby is a summer Olympic Sport,

The Rugby World Cup is the 3rd largest international sporting event



Youth Tag Rugby is a summer sport in Anne Arundel Cty: Andover Apaches (Linthicum), Green Hornets (Severna Park), Arden (Crofton), & South River.

ST. PHILIP NERI TUITION RAFFLE

Supporting the SPH H.S.A.



..... Top Prize

ONE FULL YEAR OF TUITION*
VALUED @ \$6,975

.....
Or \$2,500 Cash Option

Ticket Price:

\$25

3 for \$60 | 5 for \$100

Drawing Date:

May 2024

@ St. Philip Neri School

ORDER TICKETS ONLINE @

>>> forms.diamondmindinc.com/stphilipneri/HSATuition <<<

For more information, please email SPNHSAMD@gmail.com.

*Minimum of 400 tickets must be sold to award the St. Philip Neri Tuition prize, or top prize reverts to \$2,500 cash option. Tuition prize is transferrable and must be redeemed during the 2024/2025 school year. Winner is responsible for all taxes, please consult a tax professional.

Sponsor & Proud Supporter:

TOMAS BROTHERS
Home Improvement

TomasBrothers.com