



2023-2024 SPN Year



Official PBIS Silver School & 2022 Kindness Certified School  
2021-2022 Top Work Places

## Social Media

Facebook:

St. Philip Neri Catholic  
School

Instagram: [Spnjesters](#)

X: [@StPhilipNeriSch](#)

## August 18, 2023

### INFORMATIONAL FLYERS INCLUDED IN THIS NEWSLETTER:

SCHOOL EVENTS – Lunch Menu for August and September, Ice Cream Social, Back to School Night/HSA Meeting, School Supply List, Faculty Listing, Spirit Wear Information, Purse Bingo, Linthicum Community Fair, HSA Spirit Nights at Restaurants, and HSA Tuition Raffle  
PARISH EVENTS –KOC's Shrimp and Bull Feast and Eucharistic Prayer Retreat

### Looking Ahead

- August 17, 2023 Spirit Night at Italia's Corner from 4-8:30 PM
- August 23, 2023 Ice Cream Social from 4-5:30 PM
- August 23, 2023 Used Uniform Exchange from 3:30-5:30 PM
- August 28, 2023 First Day of the 2023-2024 School Year
- August 28, 2023 Early dismissal at 12:15 PM
- August 31, 2023 School Mass for all Grades at 9 AM
- August 31, 2023 Back to School Night and Home School Association Meeting at 4:30 PM
- September 1, 2023 Early Dismissal at 12:15 PM with offices closing at 1 PM
- September 4, 2023 NO SCHOOL - Labor Day
- September 5, 2023 HSA's Charleston Wrap kick-off Day
- September 5, 2023 Join the Cub Scouts Night at 7 PM
- September 7, 2023 SPN Spirit Night at Italia's Corner Café from 4-8:30 PM
- September 7, 2023 School Mass for pre-K to Grade 3 at 9 AM
- September 11, 2023 SPN Chorus Practices start from 3-4:30 PM
- September 12, 2023 Spirit Night at Chipotle from 4-8 PM
- September 14, 2023 School Mass for all Grades at 9 AM

St. Philip Neri School • 410-859-1212 • [office@spnmd.org](mailto:office@spnmd.org) • [spnmd.org](http://spnmd.org)

### *Mission Statement:*

*St. Philip Neri School is dedicated to fostering Catholic faith and academic excellence. Under the guidance of the Holy Spirit, students are provided the opportunity to develop their gifts and talents while striving to become active members of their church. A foundation for future success and life-long learning is provided in partnership with the family, parish and school community.*

**FIRST DAY OF SCHOOL**  
**FOR THE 2023-2024 SCHOOL YEAR IS**  
**Monday, August 28, 2023**  
**Early Dismissal at 12:15 PM**

**FIRST DAY**  
**OF SCHOOL**



Hopefully our students have been working on their summer homework packets!

Please have these completed by the first day of school! If you have misplaced the packet, you can go on our website to our **HOMEWORK** page and locate the grade you need. Here is the direct link:

<https://spnmd.org/homework-pages/>

## **SPN SCHOOL OFFICE HOURS**

Beginning on Monday, August 21,  
our office hours will be:  
**Monday through Friday**  
**7:30 AM to 4:00 PM**



**School  
Office  
Hours**

## **SPN USED UNIFORM EXCHANGE**

Email Holly at [spnuseduniforms@gmail.com](mailto:spnuseduniforms@gmail.com) with specific questions!  
We will be having a sale during the **ICE CREAM SOCIAL** on August 23!



**Ice Cream Social**

## **ICE CREAM SOCIAL**

We welcome all of our current and new school families to SPN for the upcoming 2023-2024 school year! We hope you can attend the Home and School Association's (HSA) Ice Cream Social on Wednesday, August 23, from 4:00-5:30 PM. See flyer on the next page!

Hope to see everyone!

# SPN ICE CREAM SOCIAL

Wednesday, August 23rd @4pm  
SPN Field & Gym

Meet your teacher, pick up your school supply kit and enjoy an ice cream treat!

The Used Uniform Exchange will be open for sales only

Volunteer at the social and get a head start on your hours! Click the Link Below

Click Here!



The **HOME AND SCHOOL ASSOCIATION (HSA)** exists to help build and strengthen our parish and community by serving as sponsors of our academic programs so as to help realize its three-fold purpose: to teach doctrine, to build community, and to serve. This commitment is fulfilled through service:

### TO THE HOME:

- \* by promoting a clearer understanding of the mutual educational responsibilities of parents and teacher
- \* by sponsoring activities to strengthen the family-school community

### TO THE SCHOOL:

- \* by perpetuating the existence of St. Philip Neri School
- \* by promoting active membership within the Home and School Association
- \* by developing an active volunteer program

Want to get a head start on your volunteer hours?

The Home and School Association is looking for volunteers for the Ice Cream Social!

Here is the link:

<https://www.signupgenius.com/go/70a0b4baea29aafb6-icecream2#/>

## ST. PHILIP NERI USED UNIFORM EXCHANGE

3-5 PM DROP OFFS AND SALES

PLEASE USE THE FRONT DOORS OF THE SCHOOL TO ENTER.  
THE USED UNIFORM EXCHANGE IS ON THE BASEMENT LEVEL OF THE SCHOOL.

AS WE ARE IN SHORT SUPPLY OF POPULAR ITEMS,  
YOU MAY WANT TO EMAIL FIRST TO SEE IF WE HAVE  
WHAT YOU ARE LOOKING FOR!

HOPE TO SEE YOU SOON!

EMAIL US:

[spnuseduniforms@gmail.com](mailto:spnuseduniforms@gmail.com)

2023-2024 Dates  
10/2, 12/4, 2/5,  
4/8, and 6/3

SPN  
Basement  
next to  
the Music  
Room

The HSA will be having a used uniform sale during the **ICE CREAM SOCIAL** on Wednesday, August 23, from 3:30-5:30 PM.

As always, you can email us at [spnuseduniforms@gmail.com](mailto:spnuseduniforms@gmail.com) with any questions if you are unable to make the event. Just a reminder, this event will be for **SALES ONLY!** There will be **NO DROP-OFFS** taken at this event. Thank you for your understanding!

**BACK  
TO  
SCHOOL**



Back to School Night

and

Home and School Association Meeting

Thursday, August 31

4:30pm SPN Gym

Meet our  
awesome HSA  
Team!

Back by Popular  
Demand!

Find out what is going on in  
your child's class!

Check out your  
child's classroom!

One Night Only!

Get important information from  
your child's teachers!



Time to meet your HSA Board and child's teachers!

**Thursday, August 31**  
**Please meet in the gym at 4:30 PM.**

The Home and School Association will start things off with information about the events sponsored by this wonderful group! Meet the board and see how you can help out with the fun events at SPN School! Many hands make less work!

Following the HSA meeting you will be heading to your child's homeroom.

This event will end at 6:30 PM.

**PLEASE MARK YOUR CALENDARS!**

**SPN Spirit Night at Italia's Corner**



**1st Thursday of the Month**  
**4:00-8:30 PM**  
**7089 B&A Blvd.**  
**Glen Burnie, MD 21061**

Please mention SPN when you order for dine-in or carry-out. The Italia's Corner cashier will put all receipts in a basket. SPN will earn 10% back on the total!



**Sponsored by the Home and School Association**

**Spirit Days**

**Every Monday in October**

**Linthicum and Glen Burnie Stores**



Save your itemized (not credit card) receipt and turn into the SPN Office. The school earns up to 20% of the total once the receipts are collected. Each family that brings in a GDG itemized receipt will receive an out-of-uniform pass. Limit one pass (for each student in the family) for the month!

**Spirit Night at Chick-fil-A from 4:00-8:00 PM**



**Sept. 25**  
**Nov. 6**  
**Jan. 8**  
**Apr. 22**

Mention our school to the cashier inside or at the drive-thru to earn 15% of the total for SPN. Mobile orders do not count toward the fundraiser. Centre at Glen Burnie 6709 Ritchie Highway Glen Burnie, MD 21061

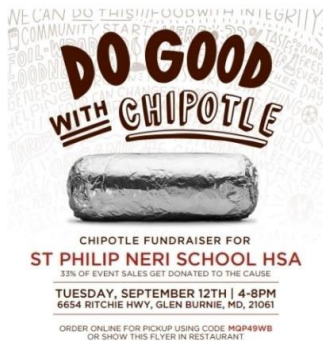


**Spirit Day at Panda Express**

**Dec 11**  
**Code - 358209**  
**Jan 22**  
**Code - 359210**

Order online and enter the fundraising code or show the flyer in the restaurant for SPN to earn 20% of your order total.

**ALL DAY LONG**



**September 12**  
**4-8 PM**

Order online for pickup using code MQP49WB or show this flyer in the restaurant for SPN to earn 33% of your order total!

**St. Philip Neri Spirit Days**  
**9/20, 11/15, 2/21 and 5/15**  
**ALL DAY LONG**



Please show the fundraiser flyer (paper or electronic copy) to your server. SPN will earn 10% back on the food sales.

## 2023-2024 St. Philip Neri School Faculty

PKA Teacher	Mrs. Susan Spitzer	<a href="mailto:sspitzer@spnmd.org">sspitzer@spnmd.org</a>
PKA Aide	Mrs. Caryn Hamlin	<a href="mailto:chamlin@spnmd.org">chamlin@spnmd.org</a>
PKA Aide	Ms. Mia Tran	<a href="mailto:mtran@spnmd.org">mtran@spnmd.org</a>
PKB Teacher	Mrs. Carmie Buckey	<a href="mailto:cbuckey@spnmd.org">cbuckey@spnmd.org</a>
PKB Aide	Mrs. Jeannie Carpenter	<a href="mailto:jcarpenter@spnmd.org">jcarpenter@spnmd.org</a>
PKB Aide	Ms. Amanda Cosgrove	<a href="mailto:acosgrove@spnmd.org">acosgrove@spnmd.org</a>
1-3 Aide	Mrs. Andrea Dantine	<a href="mailto:adantine@spnmd.org">adantine@spnmd.org</a>
KA Teacher	Mrs. Sheri Massa	<a href="mailto:smassa@spnmd.org">smassa@spnmd.org</a>
KA Aide	Mrs. Marie Jordan	<a href="mailto:mjordan@spnmd.org">mjordan@spnmd.org</a>
KB Teacher	Ms. Karen Markiewicz	<a href="mailto:kmarkiewicz@spnmd.org">kmarkiewicz@spnmd.org</a>
KB Aide	Mrs. Rachel Bruggy	<a href="mailto:rbruggy@spnmd.org">rbruggy@spnmd.org</a>
1A Teacher	Mrs. Deborah Flynn	<a href="mailto:dflynn@spnmd.org">dflynn@spnmd.org</a>
1B Teacher	Mrs. Megan Hornberger	<a href="mailto:mhornberger@spnmd.org">mhornberger@spnmd.org</a>
2A Teacher	Mrs. Melissa Johnson	<a href="mailto:mjohnson@spnmd.org">mjohnson@spnmd.org</a>
2B Teacher	Mrs. Kaitlyn McCracken	<a href="mailto:kmccracken@spnmd.org">kmccracken@spnmd.org</a>
3A Teacher	Mrs. Catherine Feeley	<a href="mailto:cfeeley@spnmd.org">cfeeley@spnmd.org</a>
3B Teacher	Mrs. Summer Montgomery	<a href="mailto:smontgomery@spnmd.org">smontgomery@spnmd.org</a>
4A Teacher	Mrs. Becky Berger	<a href="mailto:rberger@spnmd.org">rberger@spnmd.org</a>
4B Teacher	Ms. Michelle Novak	<a href="mailto:mnovak@spnmd.org">mnovak@spnmd.org</a>
5A Teacher	Mrs. Jennifer Bowser	<a href="mailto:jbowser@spnmd.org">jbowser@spnmd.org</a>
5B Teacher	Ms. Carla Johnson	<a href="mailto:cjohnson@spnmd.org">cjohnson@spnmd.org</a>
4-5 Aide	Mrs. Heather Horton	<a href="mailto:horton@spnmd.org">horton@spnmd.org</a>
6A Homeroom	Ms. Anna Schomaker	<a href="mailto:aschomaker@spnmd.org">aschomaker@spnmd.org</a>
6B Homeroom	Mrs. Susan Naylor	<a href="mailto:snaylor@spnmd.org">snaylor@spnmd.org</a>
7A Homeroom	Ms. Susan DeLoach	<a href="mailto:sdeloach@spnmd.org">sdeloach@spnmd.org</a>
7B Homeroom	Mrs. Sally Moran	<a href="mailto:smoran@spnmd.org">smoran@spnmd.org</a>
8A Homeroom	Mr. Christopher McGloin	<a href="mailto:cmcgloin@spnmd.org">cmcgloin@spnmd.org</a>
8B Homeroom	Mr. John Maranto	<a href="mailto:jmaranto@spnmd.org">jmaranto@spnmd.org</a>
MS LA/SS	Ms. Megan Moxley	<a href="mailto:mmoxley@spnmd.org">mmoxley@spnmd.org</a>
Art Teacher	Mrs. Jennifer MacRobbie	<a href="mailto:jmacrobbie@spnmd.org">jmacrobbie@spnmd.org</a>
Librarian	Mrs. Doreen Giordano	<a href="mailto:dgiordano@spnmd.org">dgiordano@spnmd.org</a>
K-2 Music/Comp	Ms. Amy Sewell	<a href="mailto:asewell@spnmd.org">asewell@spnmd.org</a>
3-8 Music/Comp	Mr. Philip Lathroum	<a href="mailto:plathroum@spnmd.org">plathroum@spnmd.org</a>
PE Teacher	Mr. Travis Bateman	<a href="mailto:tbateman@spnmd.org">tbateman@spnmd.org</a>
P-4 Spanish	Mrs. Luz Garcia	<a href="mailto:lgarcia@spnmd.org">lgarcia@spnmd.org</a>
5-8 Spanish	Ms. Susan DeLoach	<a href="mailto:sdeloach@spnmd.org">sdeloach@spnmd.org</a>
Resource	Mrs. Luz Morales	<a href="mailto:lmorales@spnmd.org">lmorales@spnmd.org</a>
Resource	Ms. Ellen Piwko	<a href="mailto:epiwko@spnmd.org">epiwko@spnmd.org</a>
Resource	Mrs. Mary Ellen Gambogi	<a href="mailto:mgambogi@spnmd.org">mgambogi@spnmd.org</a>
Counselor	Mrs. Sue Porembski	<a href="mailto:sporembski@spnmd.org">sporembski@spnmd.org</a>
7-8 Latin	Ms. Susan DeLoach	<a href="mailto:sdeloach@spnmd.org">sdeloach@spnmd.org</a>
Technology	Mr. Matthew Pilkus	<a href="mailto:mpilkus@spnmd.org">mpilkus@spnmd.org</a>
Secretary	Mrs. Susie Frazier	<a href="mailto:sfrazier@spnmd.org">sfrazier@spnmd.org</a>
Business Mgr.	Mrs. Theresa Wellein	<a href="mailto:twellein@spnmd.org">twellein@spnmd.org</a>
Secretary	Mrs. Katie Spielman	<a href="mailto:kspielman@spnmd.org">kspielman@spnmd.org</a>
Health Room	Mrs. Brandi Bush	<a href="mailto:healthroom@spnmd.org">healthroom@spnmd.org</a>
Extended Care	Mrs. Carla Ratliff	<a href="mailto:cratliff@spnmd.org">cratliff@spnmd.org</a>
Maintenance	Mr. Joe Mosmiller	<a href="mailto:jmosmiller@spnmd.org">jmosmiller@spnmd.org</a>
Maintenance	Mrs. Sue Roberts	<a href="mailto:sroberts@spnmd.org">sroberts@spnmd.org</a>
Hot Lunch	Mrs. Nancy Reed	<a href="mailto:nreed@spnmd.org">nreed@spnmd.org</a>
Hot Lunch	Mrs. Theresa Novak	<a href="mailto:tnovak@spnmd.org">tnovak@spnmd.org</a>

PASTOR - Father Andy Aaron  
[AAaron@archbalt.org](mailto:AAaron@archbalt.org)

PRINCIPAL - Mrs. Kate Daley  
[kdaley@spnmd.org](mailto:kdaley@spnmd.org)

ASST PRINCIPAL - Ms. Rebecca Burch  
[rburch@spnmd.org](mailto:rburch@spnmd.org)

ADMISSIONS DIR - Ms. Amy Sewell  
[asewell@spnmd.org](mailto:asewell@spnmd.org)

DEVELOPMENT DIR - Mrs. Sue Wenzlick  
[swenzlick@spnmd.org](mailto:swenzlick@spnmd.org)

### MIDDLE SCHOOL SUBJECTS

6A Religion	Mr. Chris McGloin
6B Religion	Ms. Susan Naylor
6A ELA	Ms. Megan Moxley
6B ELA	Ms. Susan Naylor
6A Math	Ms. Anna Schomaker
6B Math	Mr. Chris McGloin
6A Science	Mrs. Sally Moran
6B Science	Mrs. Sally Moran
6A SS	Ms. Anna Schomaker
6B SS	Ms. Megan Moxley
7A Religion	Ms. Susan DeLoach
7B Religion	Ms. Susan DeLoach
7A ELA	Ms. Megan Moxley
7B ELA	Ms. Susan Naylor
7-1 Math	Ms. Anna Schomaker
7-2 Math	Mr. Chris McGloin
7A Science	Mrs. Sally Moran
7B Science	Mrs. Sally Moran
7A SS	Mr. John Maranto
7B SS	Mr. John Maranto
8A Religion	Mr. John Maranto
8B Religion	Mr. John Maranto
8A ELA	Ms. Megan Moxley
8B ELA	Ms. Susan Naylor
8-1 Math	Ms. Anna Schomaker
8-2 Math	Mr. Chris McGloin
8A Science	Mrs. Sally Moran
8B Science	Mrs. Sally Moran
8A SS	Mr. John Maranto
8B SS	Mr. John Maranto



# St. Philip Neri School

Nourishing the  
Soul, Mind, and Body

PREK 4 to GRADE 8

[www.spnmd.org](http://www.spnmd.org)

410-859-1212

## 2023-2024 School Calendar Early Dismissals and No School Days

August 28	Early Dismissal at 12:15 PM	February 2	Early Dismissal at 12:15 PM
September 1	Early Dismissal at 12:15 PM	February 19	NO SCHOOL
September 4	NO SCHOOL	March 1	NO SCHOOL
October 5	Early Dismissal at 12:15 PM	March 13	Early Dismissal at 12:15 PM
October 6	NO SCHOOL	March 28	Early Dismissal at 12:15 PM
October 27	NO SCHOOL	March 29	NO SCHOOL
November 8	Early Dismissal at 12:15 PM	April 1-5	NO SCHOOL
November 22	Early Dismissal at 12:15 PM	April 26	Early Dismissal at 12:15 PM
November 23	NO SCHOOL	May 10	NO SCHOOL
November 24	NO SCHOOL	May 23	Early Dismissal at 12:15 PM
December 20	Early Dismissal at 11 AM	May 24	NO SCHOOL
December 21-31	NO SCHOOL	May 27	NO SCHOOL
January 1-2	NO SCHOOL	June 5	Early Dismissal at 12:15 PM
January 15	NO SCHOOL	June 6	Early Dismissal at 11 AM
		June 6	Last Day of School

*We would like to welcome six new staff members to St. Philip Neri School!*

**Ms. Mia Tran and Ms. Amanda Cosgrove** have joined our pre-K staff as aides.

**Mrs. Marie Jordan** will be assisting Mrs. Sheri Massa in Kindergarten.

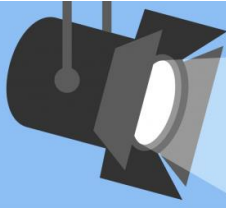
**Mrs. Megan Moxley** will be joining our MS Staff teaching SS and ELA.

**Mrs. Mary Ellen Gambogi** will be joining our resource staff.

**Mrs. Katie Spielman** will be joining our office staff.

We are very excited to have these new staff members on our team!





## Faculty Spotlights

Throughout the school year we will feature a Faculty Member in the Parent Newsletter!  
This week we are featuring:

**Mrs. Sue Wenzlick**  
Development Director  
St. Philip Neri School

Mrs. Wenzlick has been part of St. Philip Neri School since her children started attending in 1999. Not only has she been part of the school, she has also been a member of the SPN Parish her entire life! She played the piano for many church Masses!



Mrs. Wenzlick graduated from James Madison University with a degree in Computer Science with a minor in Mathematics. She is married to Dan and they have two adult children, Scott and Bob. They are looking forward to the marriage of Bob to Taylor in April of 2024.

Mrs. Wenzlick has done a variety of jobs during her time at SPN School: substitute teacher, room mom, HSA board member, Santa's Secret Workshop coordinator and the Talent Show coordinator.

In 2009 she was hired as one of the Middle School Math teachers. Throughout her career she played the piano for Christmas Concerts and school Masses, and taught 8<sup>th</sup> Grade Religion and Primary Music before she landed the job as the Development Director. This job entails raising money for the school, heading up the financial aid committee, enrolling students, updating the website, and sending out parent newsletters.

In 2020 she made a decision to move to Florida. She tried to retire but Mrs. Daley convinced her to remain on as the Development Director and hired Ms. Amy Sewell to take

over enrollment. She loves to fly up to Maryland and run events (purse bingos, golf tournament, Santa's Secret Workshop) for SPN! Mrs. Wenzlick loves her part-time job for SPN and loves seeing the smiling faces of our students!





# St. Philip Neri Spirit Wear

<https://1stplacespiritwear.com/schools/MD/Linthicum+Heights/St+Philip+Neri+School/>

## 2023-2024 SPN T-SHIRT LINKS

### YOUTH SIZES

<https://1stplacespiritwear.com/schools/MD/Linthicum+Heights/St+Philip+Neri+School/product.html?sku=I80S43164T1711L63&category=Youth>

### ADULT SIZES

<https://1stplacespiritwear.com/schools/MD/Linthicum+Heights/St+Philip+Neri+School/product.html?sku=I20S43164T1711L1&category=Mens>

## OFFICIAL SPN HOODIE LINKS

### ADULT SIZES

<https://1stplacespiritwear.com/schools/MD/Linthicum+Heights/St+Philip+Neri+School/product.html?sku=I188S43164T671L14&category=Womens>

### YOUTH SIZES

<https://1stplacespiritwear.com/schools/MD/Linthicum+Heights/St+Philip+Neri+School/product.html?sku=I241S43164T671L23&category=Youth>

**ST PHILIP NERI**  
THE OFFICIAL ONLINE STORE

# BACK-TO-SCHOOL SALE

Advertisement for St. Philip Neri Spirit Wear featuring a variety of merchandise: a dark blue polo shirt with 'ST PHILIP NERI SPN' logo, a grey t-shirt with a rainbow and 'St Philip Neri' text, a dark blue hoodie with 'JESTERS ST PHILIP NERI' text, a yellow t-shirt with 'St Philip Neri' text, a black baseball cap with 'ST PHILIP NERI JESTERS' text, and a black water bottle with 'ST PHILIP NERI JESTERS ATHL. DEPT. CAMELBAK' text. A large red banner at the bottom right reads '30% OFF SITEWIDE!' with 'FREE SHIPPING ORDERS OVER \$75' and a QR code. The bottom left corner includes the '1st Place Spiritwear' logo and the text 'SALE RUNS: AUG 22nd - SEP 21st ORDER AT: 1STPLACE.SALE/43164'.



2023-2024  
SPN T-SHIRT



SPN OFFICIAL  
HOODIE

# ST. PHILIP NERI SCHOOL SUPPLY LISTS 2023-2024

IF YOU DID NOT PLACE AN ORDER FOR THE SCHOOL SUPPLY KIT, YOU WILL NEED TO PURCHASE THE FOLLOWING SUPPLIES FOR THE UPCOMING SCHOOL YEAR:

## PRE-K

- 1 marble copybook
- 1 2-inch, 3-ring binder
- 2 boxes of tissues
- 4 containers of Clorox wipes
- 1 ream of white copy paper
- 1 full-size backpack
- 1 lunchbox

## KINDERGARTEN

- 2 jumbo Elmer's glue sticks (.77oz)
- 1 4-count pack of fine/thin **black Expo** dry erase markers
- 3 boxes of Crayola 24-count crayons
- 1 12-count pk. Ticonderoga brand pencils (yellow, wooden only)
- 1 pair blunt Fiskar brand scissors, metal blades
- 1 plastic school box (cigar box size)
- 1 yellow poly folder – no prongs
- 1 ream of white copy paper
- 1 container Clorox wipes

### ITEMS NOT IN SCHOOL KIT:

- Headphones - label with name
- 1 large backpack labeled with name – no wheels
- 1 soft lunchbox labeled with name – metal lunchboxes are not permitted
- Drink container – aluminum/metal bottles are not permitted
- 1 family-size box of tissues – boys only
- 1 large box gallon size Ziploc bags – girls only
- \*\*Children are to have a set of supplies (glue stick, pencil, crayons, and scissors) at home to complete homework.

## FIRST GRADE

- 1 yellow poly pocket folder
- 1 blue poly pocket folder
- 1 red poly pocket folder
- 1 plastic school box (cigar box size)
- 4 thin, black dry erase markers
- 2 boxes of crayons - (maximum 24)
- 12 No. 2 pencils (yellow wooden pencils only)
- 4 glue sticks
- 1 pair of blunt scissors (metal blades)
- 2 big pink single erasers
- 2 boxes of tissue
- 2 containers Clorox disinfecting wipes
- 1 ream of white copy paper

### ITEMS NOT IN SCHOOL KIT:

- 1 large backpack or duffel bag
- Headphones for Chromebook

**ART SUPPLIES FOR ALL GRADES LISTED ON PAGE 2.**

**REPLENISH SUPPLIES AS NEEDED.**

### NOT PERMITTED FOR ALL GRADES:

White Out	Hole Punchers
Trapper Keepers	Gel Pens
Staplers	Pencil Sharpeners

## SECOND GRADE

- 3 poly-pocket folders: yellow, blue, red
- 1 large SOFT material pencil case for supplies
- 2 Jumbo Booksox
- 2 boxes of 24-ct. crayons
- 1 4-pk multi-color highlighters
- 1 4-pk fine, black Expo markers
- Scissors – blunt
- 4 glue sticks (1 for library)
- 2 rectangular pink erasers
- 12 No. 2 **non-decorative** yellow pencils
- 2 boxes of tissue
- 2 containers of Clorox wipes
- 1 ream of white copy paper

### ITEMS NOT IN SCHOOL KIT:

- Bookbag
- Headphones

## THIRD GRADE

- Pencil case (**zipper style only**)
- 2 bxs. Crayons (16 or 24 ct, no larger)–(1 is for Library)
- 12 No. 2 yellow pencils, no fancy tops
- 1 Expo dry erase marker
- 1 yellow highlighter
- 3 plastic pocket folders (yellow, blue, red)
- 2 glue sticks
- Child's safety scissors
- 3 200-page **Black and White** marble copybook
- 2 pink erasers
- 2 family-size boxes of tissues
- 1 ream of white copy paper
- 2 containers of Clorox Wipes

### ITEMS NOT IN SCHOOL KIT:

- Backpack
- Headphones (not included in school kit)

**NO TRAPPER KEEPERS, LOOSELEAF BINDERS, PENCIL SHARPENERS, COLORED PENCILS, OR MAGIC MARKERS**

## FOURTH GRADE

- 2 packs sharpened No. 2 pencils
  - 6 red erasable pens
  - 12 blue or black erasable pens
  - 2 yellow highlighters
  - 1 pack black dry erase markers
  - 2 boxes of 24 crayons
  - 1 box colored pencils (basic colors)
  - 2 large pencil cases (soft material)
  - 2 pink, rectangular erasers
  - 2 pairs scissors
  - 12 glue sticks
  - 2 pads sticky notes
  - 1 pack wide-rule loose-leaf paper
  - 7 marble copybooks (one dedicated to Spanish)
  - 4 poly pocket folders (blue, red, yellow, green)
  - 2 large containers Clorox disinfecting wipes
  - 3 large boxes of tissues
  - 1 ream white copy paper
  - Clipboard
  - 1 hand sanitizer
- ### ITEMS NOT IN SCHOOL KIT:
- Backpack
  - Earbuds (inexpensive)
  - No mechanical pencils, pencil sharpeners, trapper keepers, loose-leaf binder or magic markers

# ST. PHILIP NERI SCHOOL SUPPLY LISTS 2023-2024

IF YOU DID NOT PLACE AN ORDER FOR THE SCHOOL SUPPLY KIT, YOU WILL NEED TO PURCHASE THE FOLLOWING SUPPLIES FOR THE UPCOMING SCHOOL YEAR:

## FIFTH GRADE

- 5 marble copy books (Math, ELA, Spanish, Science, SS)
- 6 poly pocket folders (Math, ELA, Specials, Science, SS, Religion)
- 2 packets of wide-rule loose leaf paper (to be collected)
- 1 large, soft pencil case
- 1 ruler which measures both inches & centimeters
- 3 large book sox (Grammar, Science, SS)
- 1 ream of white copy paper
- 2 large containers of disinfecting wipes
- 1 large hand sanitizer
- 2 large boxes of tissues
- 2 pink, rectangular erasers

### **Continuous supply at all times:**

- 1 pack of 3x5 lined note cards (collected)
- 1 pad of sticky notes (collected)
- 2 blue or black erasable pens
- #2 wooden pencils (no mechanical pencils)
- 2 red pens
- 2 yellow highlighters
- 2 black dry erase markers
- 2 glue sticks

### **ITEMS NOT IN SCHOOL KIT:**

- Backpack
- Earbuds (inexpensive)
- Clipboard

## ART SUPPLIES NEEDED

### **PREKINDERGARTEN:**

No supplies needed

### **GRADES 5 – 8 ONLY:**

- 1 pack of 24 crayons
- 1 pack of eight colored pencils
- 1 pack of thick markers—basic colors
- 1 large pink eraser
- 1 pair of sharp scissors
- 5 glue sticks
- 1 large container of anti-bacterial wipes

## GRADES 6, 7, & 8

- 1 pack dry erase markers
- 2 packs of blue/black pens (not erasable pens)
- 3 highlighters (yellow, pink, & green)
- 2 packs of No. 2 pencils
- 1 pack of 24 colored pencils
- Pencil Pouch
- 5 marble copybooks (religion, math, science, Spanish, social studies)
- 6 folders (red, orange, yellow, green, blue, & purple)
- 2 packs wide-ruled loose-leaf paper
- 1 pack graph paper (4"x4" square quad rulings)
- 2 packs of Post-it Notes
- 3 large boxes of tissues
- 2 rolls of paper towels
- 1 12 oz. or larger bottle of anti-bacterial sanitizer
- 2 large containers of anti-bacterial wipes
- 1 ream of white copy paper

### **ITEMS NOT IN SCHOOL KIT:**

- 1 backpack (not with wheels)
- 1 box of gallon-sized Ziploc bags (boys only)
- 1 box of sandwich-sized Ziploc bags (girls only)
- Earbuds for Chromebooks
- 1 large 2-subject notebook/orange (ELA)

\*Students may be required to read selected novels throughout the year. Teachers will give sufficient amount of time to purchase the novels.

### **NOT ALLOWED IN MIDDLE SCHOOL FOR THE 2023-2024 SCHOOL YEAR:**

- Liquid White Out
- Spray-style water bottles

### **NOT PERMITTED FOR ALL GRADES:**

- |                 |                   |
|-----------------|-------------------|
| White Out       | Hole Punchers     |
| Trapper Keepers | Gel Pens          |
| Staplers        | Pencil Sharpeners |

**REPLENISH SUPPLIES AS NEEDED.**

## Shrimp & Bull Roast



September 23, 2023

6:00-10:00pm

St. Philip Neri

Mgsr. Zorbach Hall

6405 Orchard Road, Linthicum, MD 21090



Catered by Superior Catering/Music by DJ Rockin Ron

Tickets \$55/person (No Tickets Sold at Door)

Call or Text 571-369-0930 for tickets

Food Served 6:00-9:00; Beverages Served 6:00-10:00

Ice Cold Cans of Coors Light and Yuengling

iced Tea, Soda, Water

The Menu includes:

Steamed Shrimp

Top Round Pit Beef

Sweet Honey Pit Ham

Roasted Pit Turkey Breast

Assortment of Breads and Rolls

Shrimp Scampi over Linguini with Broccoli Florets

Whipped Garlic Potatoes

Gourmet Mac & Cheese

Brown Gravy

Seasoned Green Beans

Tossed Salad with Assorted Dressings

Sheet Cake

*"JESUS IS THE EUCHARIST"*

*"Jesús es la Eucaristía"*

St Philip Neri and St Clement's Parishes request you

Save the Date/ Guarde la fecha

**NOVEMBER 11, 2023**

*"Reserve the date in your calendar...."*

*"Reserva la fecha en su calendario...."*

*Parish Eucharistic Retreat/Conference*  
*Retiro Eucarístico Parroquial/ Conferencia*

**8am - 2pm**

**Mass/Masa: 9am**  
**Speakers/Altavoces**  
**Lunch/Almuerzo**

*Theme: Tema:*

*"Live the Eucharist"*

*"Vive la Eucaristía"*

**ALL ARE WELCOME**

**Todos son bienvenidos**

St. Philip Neri Parish Outreach Ministry - always looking for volunteers!

Contact Donna Scott at [dscott@spnmd.org](mailto:dscott@spnmd.org)  
to find out ways you can help this ministry!

The Parish Junior Choir starts practicing on  
Thursday, September 28, at 6:15 PM  
in the church.



# Child Nutrition Program/St. Philip Neri School

# August/September 2023 Lunch Menu

Monday	Tuesday	Wednesday	Thursday	Friday
Aug. 28 First Day of School  Early Dismissal 12:15pm	29 Chicken Patty Sandwich Corn Fresh Carrots Fruit	30 Toasted Cheese Sandwich Tomato Soup Fresh Carrots Fruit	31 Meatballs in Marinara Sauce Dinner Roll Celery w/Sun Butter Cup Fresh Carrots Fruit	Sept. 1  Early Dismissal  12:15pm
4  Labor Day  No School	5 Chicken Parmesan Sandwich Corn Fresh Carrots Fruit	6 Rotini with Meat Sauce Dinner Roll Green Beans Fresh Carrots Fruit	7 Chicken Mac n' Cheese Bowl Dinner Roll Cherry Tomatoes w/Ranch Fresh Carrots Fruit	8  Cheese Pizza Raw Broccoli w/Ranch Fresh Carrots Fruit
11 Chicken Dumplings w/General Tso's Dipping Sauce Tostito Chips Corn Fresh Carrots Fruit	12 Korean Meatballs Fritos Broccoli w/Ranch Fresh Carrots Fruit	13 Strawberry/Banana Yogurt Mozzarella Cheese Stick Apple Cinnamon Bar Cherry Tomatoes w/Ranch Fresh Carrots Fresh Fruit	14 Mini Corn Dogs Baked Beans Fresh Carrots Fruit	15 Cheese Pizza Celery w/Sun Butter Cup Fresh Carrots Fruit
18 Popcorn Chicken Waffle Baked Beans Fresh Carrots Fruit	19 Mac n Cheese Fritos Sunshine Carrots Fresh Carrots Fruit	20 Chicken Tender Salad w/Romaine & Ranch Tostitos Chips Fresh Carrots Fruit	21 Taco In A Bag Salsa Cup Corn Fresh Carrots Fruit	22 Cheese Pizza Cauliflower w/Ranch Fresh Carrots Fruit
25 Chicken Tenders Waffle Corn Fresh Carrots Fruit	26 Mozzarella Cheese Sticks Broccoli w/Ranch Fresh Carrots Fruit	27 Chicken Drumstick Baked Beans Fresh Carrots Fruit	28 Sun Butter & Jelly Sandwich Cherry Tomatoes w/Ranch Fresh Carrots Fruit	29 Ranchero Pizza Celery Sticks w/Sun Butter Cup Fresh Carrots Fruit

Student's may take 3 out of the 5 meal components  
Required to take a FRUIT and/or VEGETABLE Fresh  
1% White Milk or Non-Fat Chocolate Milk

*Offered Daily: Milk: 1% White, NF Chocolate*  
Fruit & Vegetables may include: apples, oranges, bananas,  
seasonal fruits, carrots, celery, broccoli, cauliflower, tomatoes,  
side salads & seasonal veggies

Menu subject to change without notice.

Wisdom
Knowledge









Introducing  
the  
St. Philip Neri School  
House System

Understanding  
  
Fortitude  
  
Piety

Counsel
Fear of the Lord
Creativity

- All students (Pre-K-8th grade)  
Will be placed in one of the 8 houses
- Each house will have a house Saint, color, motto, prayer, etc
- Students will remain in that house for their entire time at SPN
- There will be fun and educational activities for the houses throughout the school year
- Students will have opportunities to earn points for their house
- Each house will have faculty and staff members

MORE  
INFO  
LATER!

### Morning Drop Off



Pre-K and Kindergarten Students

These students and their siblings will be dropped off out front at the end of the driveway by the playground. Teachers will be there to assist students.



### Morning Drop Off



1st- 8th Grade Students

These students will be dropped off on the back parking lot and enter through the North Lobby doors. Parents should remain in their vehicles.

Teachers will be on duty to assist students. Please refer to the diagram on the following page. If you have things that must be delivered to the office, please drive to the front of school and go to the office.



### Afternoon Pick Up



Pre-K Students

These students and their siblings will be picked up, out front, at the end of the driveway by the playground. Pre-K students will need to be signed out.

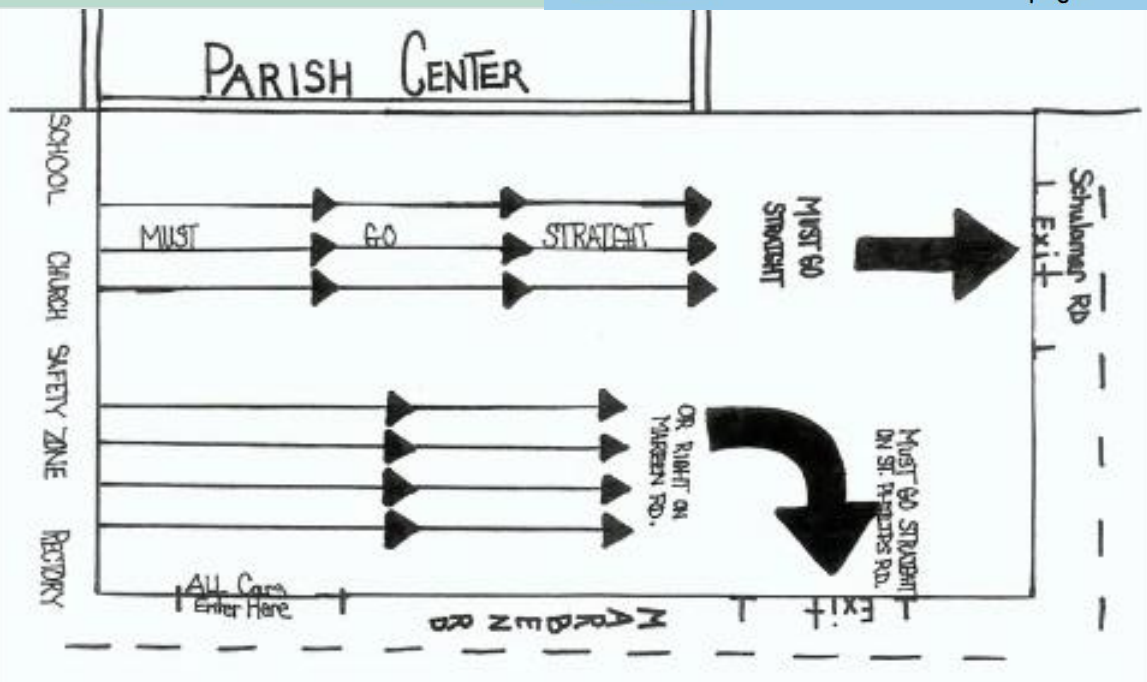


### Afternoon Pick Up



Kindergarten-8th Grade Students

These students will dismiss on the back parking lot. Students should remain with their teacher until their ride walks over to get them. Please see the diagram on the next page.





**Hosted by  
St. Philip Neri School**

**Friday,  
September 29, 2023**

**It's your chance to win Kate Spade, COACH, Michael Kors, Vera Bradley, and other purses!**

**20 Games  
of Bingo**

**3 Specials,  
2 Raffles,  
and a cash  
50/50**

**Great food will  
be available to  
purchase!**



**Doors open  
at 5:30 PM.**

**Bingo starts  
at 7 PM.**

**St. Philip Neri  
Msgr. Zorbach Hall  
6405 S. Orchard Rd.  
Linthicum, MD  
21090**

**Due to space restrictions seating will be limited. Purchase your spot now!**

**Order online at: <https://forms.diamondmindinc.com/stphilipneri/bingo>**

**If you have a group, please indicate who you would like to sit with at this event.**

**COST IS \$20!**

**This cost is for the 20-game bingo packet which does not include the specials, raffles or 50/50. No physical tickets will be delivered. Your name will be placed on the players list.**

**Special 1 - Michael Kors Jet Set Travel Tote and matching Wallet in Tea Rose print**

**Special 2 - Kate Spade Large Reversible Penguin Large Tote with matching accessory bag in Blue and White**

**Special 3 - Michael Kors Large Tote with matching accessory bag in Blue and White**



**Email  
Sue Wenzlick  
with any questions at  
[swenzlick@spnmd.org](mailto:swenzlick@spnmd.org).**

**Contact Sue for  
cash/check order form!**



**RAFFLE 1  
Vera Bradley Lighten Up  
Oversized Carryon with  
Fleece Travel Blanket in  
Antilles Treasure print**

**RAFFLE 2  
Michael Kors Charlotte  
Large 3-in-1 Tote.  
Includes Tote, Wallet,  
and Accessory Tote**





# Join us at the Linthicum Fair!

## 34TH ANNUAL LINTHICUM COMMUNITY FAIR

Saturday Sept 30, 2023 / 10am - 3pm  
St. John Lutheran Church Field  
Parade - 9am (Lindale Middle)

Food, Fun,  
Games, Dunk  
Tank, Crafts,  
Rides, Music &  
Dancing

Proceeds from the fair  
benefit HOPE FOR ALL  
and NCEON. Collecting  
non-perishable food  
items the day of the fair.



For everyone's safety please leave your furry friends at home.  
linthicumfair@gmail.com / 410-456-3019

### Show your school spirit! Walk with SPN in the Linthicum Parade

When: Saturday, September 30, 2023

Where: Lindale Middle School

415 Andover Rd, Linthicum MD 21090

Time: 8 am – Parade will start at 9 am  
We have been asked to arrive early!

Wear: Your 2023 SPN Spirit shirt or  
any Navy blue SPN spirit shirt

The Linthicum Community Fair is from 10 AM to 3 PM on  
St. John's Lutheran field at the corner of Maple Road and Hammonds Ferry Road.  
We would love to get a picture of everyone on the steps of Lindale Middle School before  
the parade starts. Bring your best smiles! Hope to see you there!



We will be collecting canned goods to support the  
NCEON (North County Emergency Outreach Network)  
food pantry. Please bring in your canned good  
donations the week of September 25-29.

Place it in the box in the school lobby.

**Let's fill the NCEON truck!**

A shuttle bus will be provided for parade participants. Please park at Lindale Middle School. When you are ready  
to head home, jump on the shuttle bus at the gate at St. John's field and they will take you back to your vehicle!

Shuttle bus will operate from 10 AM to 3 PM.



# St. Philip Neri School - Spirit Nights 2023-2024



**Italia's Corner Cafe**  
Burwood Village Center  
7089 Baltimore Annapolis  
Blvd., Suite F  
Glen Burnie, MD 21061

**1st Thursday of the month**

4:00 pm - 8:30 pm

Thurs., Sept. 7  
Thurs., Oct. 5  
Thurs., Nov. 2  
Thurs., Dec. 7  
Thurs., Jan. 4  
Thurs., Feb. 1  
Thurs., Mar. 7  
Thurs., Apr. 4  
Thurs., May 2  
Thurs., June 6

Please mention SPN when you order for dine-in or carry-out. The Italia's Corner cashier will put all receipts in a basket; SPN will earn 10% back on the total.



**Texas Roadhouse**  
4465 Mountain Rd  
Pasadena, MD 21122

**All Day Long**  
3:00 pm - 10:00 pm

Wed., Sept. 20  
Wed., Nov. 15  
Wed., Feb. 21  
Wed., May 15

Please show the fundraiser flyer (paper or electronic copy) to your server. SPN will earn 10% back on the food sales.



**Chick-fil-A**  
Centre at Glen Burnie  
6709 Ritchie Highway  
Glen Burnie, MD 21061

4:00 pm - 8:00 pm

Mon., Sept. 25  
Mon., Nov. 6  
Mon., Jan. 8  
Mon., Apr. 22

Mention our school to the cashier inside or at the drive-thru to earn 15% of the total for SPN. Mobile orders do not count toward the fundraiser.



**Glory Days Grill Linthicum**  
1616 West Nursery Rd  
Linthicum, MD 21090

OR

**Glory Days Grill Glen Burnie**  
7939 Ritchie Hw  
Glen Burnie, MD 21061

**All Day Long**  
11:00 am - 11:00 pm  
Mondays in October

Mon., Oct. 2  
Mon., Oct. 9  
Mon., Oct. 16  
Mon., Oct. 23  
Mon., Oct. 30



**Panda Express**  
6620-A Ritchie Hwy.  
Glen Burnie, MD 21061

**All Day Long**  
10:00 am - 10:30 pm

[Mon., Dec. 11](#)  
**358209**  
[Mon., Jan. 22](#)  
**358210**

Order online and enter the fundraiser code listed above OR show the flyer in the restaurant for SPN to earn 20% of your order total.



**Chipotle - Glen Burnie**  
6654 Ritchie Hwy  
Glen Burnie, MD 21090

4:00 pm - 8:00 pm

Tuesday, Sept. 12

ORDER ONLINE FOR PICKUP USING CODE **MQP49WB**  
OR SHOW THIS [FLYER](#) IN THE RESTAURANT for SPN to earn 33% of your order total.

Save your **itemized** (not credit card) receipt and give it to SPN, the school earns up to 20% of the total once the receipts are collected!

Students earn an OUT OF UNIFORM pass\* when receipts are submitted to the office!

\*Limit of one out of uniform pass per family.

# ST. PHILIP NERI TUITION RAFFLE

Supporting the SPN HSA



St. Philip Neri  
Nourishing the Soul, Mind & Body

..... Top Prize .....

## ONE FULL YEAR OF TUITION\*

### VALUED @ \$6,975

.....  
Or \$2,500 Cash Option

Ticket Price:

# \$25

3 for \$60 | 5 for \$100

Drawing Date:

# May 2024

@ St. Philip Neri School

### ORDER TICKETS ONLINE @

>>> [forms.diamondmindinc.com/stphilipneri/HSATuition](https://forms.diamondmindinc.com/stphilipneri/HSATuition) <<<

For more information, please email [SPNHSAMD@gmail.com](mailto:SPNHSAMD@gmail.com).

\*Minimum of 400 tickets must be sold to award the St. Philip Neri Tuition prize, or top prize reverts to \$2,500 cash option. Tuition prize is transferrable and must be redeemed during the 2024/2025 school year. Winner is responsible for all taxes, please consult a tax professional.

Sponsor & Proud Supporter:

**TOMAS BROTHERS**  
Home Improvement

[TomasBrothers.com](https://TomasBrothers.com)