



Official PBIS Silver School & Healey Education Foundation winners of the 2017 Innovation Award and 2018 Founders & Development Awards

Social Media

Facebook:

St. Philip Neri Catholic School

Instagram: [Spnjesters](#)

Twitter: [@StPhilipNeriSch](#)

September 9, 2022

INFORMATIONAL FLYERS INCLUDED IN THIS NEWSLETTER:

- Annual Fund Purse Bingo (9/23)
- Purse Bingo Order Form
- SPN Linthicum Community Fair (9/24)
- AOB High School Fairs
- Information on Parish Groups – Junior Choir, Emeka’s House Orphanage (10/1), Walking with Purpose, September Food Pantry Needs, Cub Scout Pack 447, RCIA, Girl Scouts, Youth Ministry, and Stroller Rosary Walks.

Looking Ahead

- September 11, 2022 Youth Mass at 5 PM
- September 12-16 MAP Testing Week
- September 12, 2022 Spirit Night at Chick-fil-A from 4-8 PM
- September 13, 2022 High School Placement Testing Registration Begins
- September 15, 2022 School Mass for all Grades at 9 AM
- September 21, 2022 Special Donor Reception at 6 PM
- September 23, 2022 Annual Fund Purse Bingo at 6 PM
- September 24, 2022 Linthicum Community Fair (Parade at 9 AM, Fair 10 AM-3 PM)
- September 27, 2022 High School Fair at Monsignor Slade
- September 28, 2022 High School Fair at School of the Incarnation
- September 29, 2022 School Mass at 9 AM for any Grades
- September 29, 2022 SPN Parish Children’s Choir – First practice at 6:15 PM
- September 30, 2022 HSA’s Movie Night at 7 PM
- October 1, 2022 Emeka’s House Orphanage Fundraiser at SPN (see flyer included)
- October 3, 2022 HSA’s Charleston Wrap order due
- October 3, 2022 HSA’s Joe Corbi Pizza Fundraiser Kick-off day
- October 3, 2022 Drama Jr. Starts from 3:00-4:30 PM

St. Philip Neri School • 410-859-1212 • office@spnmd.org • spnmd.org

Mission Statement:

St. Philip Neri School is dedicated to fostering Catholic faith and academic excellence. Under the guidance of the Holy Spirit, students are provided the opportunity to develop their gifts and talents while striving to become active members of their church. A foundation for future success and life-long learning is provided in partnership with the family, parish and school community.

NEW WEBSITE: spnmd.org

If you happen to notice anything wrong (links not working, misspellings, erroneous information), please send Mrs. Sue Wenzlick a message to bring it to her attention at swenzlick@spnmd.org.

NEW EMAIL ADDRESSES:

Just a friendly reminder that all of our school emails have been changed from "st.philip-neri.org" to "spnmd.org" - All emails with the "old" address are being forwarded to our "new" address. For example, Ms. Amy Sewell's email is now asewell@spnmd.org.

EMERGENCY FORMS:

Hopefully you had a chance to review your child's Emergency Form printed on PINK paper during the Back-to-School Night. If you were not at BTS Night, then the form was sent home to you to review and bring back to school. We will make any updates in SchoolAdmin. We appreciate your support in getting this information reviewed.



The Linthicum Community Fair is Saturday, September 24!

We will be participating in the PARADE that starts at 9 AM at Lindale Middle School on Andover Road and will be walking down Hammonds Ferry Road to St. John's Field at Maple Road. Please read the SPN School Flyer pertaining to the Linthicum Fair. We will be collecting canned goods for NCEON!

We will need volunteers to help in setting up our booth (8:30-9:30 AM), selling our PORK sandwiches and DRINKS between the hours of (10 AM - 3:00 PM), and cleaning up the area (3-4 PM). A SignUpGenius form will be going out mid-September by the Home & School Association.

SPIRIT WEAR SALE ENDS ON SEPTEMBER 21

The St Philip Neri School back-to-school spirit wear sale is winding down! Choose from hundreds of designs and garments, all delivered to your home in days. Save 30% on every single item in the store! This includes hoodies, tees, jackets and even polos! In addition, all orders over \$60 will receive free shipping.

<https://1stplacespiritwear.com/>



Tickets are going fast for the Annual Fund Purse Bingo!
Get your ticket today!

<https://forms.diamondmindinc.com/stphilipneri/bingo>



Dine-in, Drive-thru or
Carry-out orders
MUST mention SPN Spirit
Night when ordering!
***App orders MUST type
"St. Philip Neri School" in
the notes section of the
mobile order.

Centre at Glen Burnie
6709 Ritchie Highway
Glen Burnie, MD 21061

This fundraiser helps our
school earn 15% of sales
when you mention the
Spirit Night.

St. Philip Neri Spirit Nights at Chick-fil-A

2nd Monday
of the Month
4-8 PM



SPIRIT NIGHTS AT RESTAURANTS

2nd Monday of the Month
Chick-fil-A

(Due to a major remodel, our CFA Spirit Nights will
NOT happen in October, November, or December)

3rd Thursday of the Month
Italia's Corner Café

Sponsored by the Home and School
Association.

To contact the HSA, email: spnhsamd@gmail.com

Monday, September 12



**cub Scout
Pack 447**
Linthicum Heights, Maryland



K - 5th grade boys that would like to participate in
our Cub Scout Pack, please **join us for**
Back-to-Scouts night:

Tuesday, September 13th at 7PM
St. Philip Neri Catholic Church Gym
6405 S Orchard Rd, Linthicum

*You're welcome to visit a meeting to see if it's for you before you
sign up!*

<https://www.facebook.com/groups/spnpack447/>
spnpack447@gmail.com



SPN CYO Basketball is planning for
the upcoming season and will be
having a meeting on September 14
at 6 PM in the gym for those who
are interested in either being a
Head Coach or Assistant Coach.
Please contact Mike Zaccagnino
at mjzcpa@verizon.net or call
410-382-1646 if you have any
questions.

Volunteering to coach is a great
opportunity to complete your family
service hours for the year!

It's time to get your vote in for the movie to be displayed at the HSA's MOVIE
NIGHT scheduled for Friday, September 30, at 6 PM. Your choices are: **Hocus
Pocus 2, Sing 2, Space Jam Legacy, Sonic the Hedgehog 2, and Twelve.** Please
Refer to the ALERT message about this vote. The movie will start at DUSK, but
other activities will precede the movie. More info later! Mark your calendar!



ST. PHILIP NERI AND ST. CLEMENT PARISH INFORMATION

Weekend Masses

St. Philip Neri: Saturday at 5 PM
Sunday at 8 AM, 9:30 AM, and 11:30 AM
Live-Streamed, Sunday at 9:30 AM

St. Clement:
Saturday at 4 PM (English), 6 PM (Spanish)
Sunday at 7:30 AM (Spanish), 10 AM (English)

Daily Masses

St. Philip Neri: Thursday at 9 AM
Mon, Tues, Wed, and Fri at 6:30 PM

St. Clement: Monday - Friday at 8 AM

Sacrament of Confession

St. Philip Neri: Friday from 5:30-6:30 PM
Saturday from 3:15-4:45 PM

St. Clement: Tuesday from 5:30-6:30 PM
Saturday from 3:30-4:00 PM
Sunday from 9:30-9:45 AM

Eucharistic Adoration

St. Philip Neri: Wednesdays, 9 AM to 6 PM
St. Clement: Tuesdays, 9 AM to 6 PM

Starting on
September 11,
the 7:30 AM
Mass will move
to 8:00 AM!



Our students start at SPN looking like Mateo (PreK student on right) and end their time like Jimmy (8th grade student on left)! The growth in height and spirit is amazing in their years at SPN School!

SCANTRON TESTING IS NOW CALLED MAP

What is MAP?

MAP is an assessment that measures what students know and how they are growing academically—to help teachers develop strategies for equitable instruction that maximizes every learner's potential. Every child can learn and grow. The outcome of the assessments help educators make it happen. Here is a link for you to find out more information.

<https://www.nwea.org/the-map-suite/family-toolkit>

Charleston Wrap
BETTER PRODUCTS. BETTER FUNDRAISING.

The Charleston Wrap Fundraiser information was sent home this week. Orders may be placed now through October 3. This fundraiser is sponsored by the Home and School Association.



ARCHDIOCESE OF BALTIMORE
IN-PERSON HIGH SCHOOL FAIRS

6 PM - 8:05 PM



- | | |
|-------------------------------|---|
| MONDAY, SEPTEMBER 19, 2022 | St. Joseph School, Fullerton |
| TUESDAY, SEPTEMBER 20, 2022 | Immaculate Conception School, Towson |
| WEDNESDAY, SEPTEMBER 21, 2022 | Resurrection-St. Paul School, Ellicott City |
| THURSDAY, SEPTEMBER 22, 2022 | St. Mark School, Catonsville |
| MONDAY, SEPTEMBER 26, 2022 | Cardinal Shehan School, Northeast Baltimore |
| TUESDAY, SEPTEMBER 27, 2022 | Monsignor Slade School, Glen Burnie |
| WEDNESDAY, SEPTEMBER 28, 2022 | School of the Incarnation, Gambrills |
| THURSDAY, SEPTEMBER 29, 2022 | Sacred Heart School, Glyndon |
| TUESDAY, OCTOBER 4, 2022 | St. Margaret Middle School, Bel Air |
| WEDNESDAY, OCTOBER 5, 2022 | St. Ursula School, Parkville |

In-person fairs begin at 6:00pm, with an open portion where schools meet and greet with families. School representatives then move to classrooms to meet with families in smaller groups. The final breakout session concludes at 8:05pm.

Follow us: @archbaltschools



Walking with PURPOSE

Enabling women to know Christ through Scripture



Come join the women of St Philip Neri & St Clement in a Catholic Bible Study called Walking with Purpose!

You can sign up for either...

Wednesday mornings from 9:30AM-11AM

or Wednesday evenings from 7PM-8:30PM

We will start September 14th!

For more information, contact the parish office at 410.859.0571 or email theresaewaggoner@gmail.com

There are 3 sessions to choose from:

Opening your Heart...the starting point

Grounded in Hope...a study from Hebrews

Reclaiming Friendship...God's plan for deep connection

Find out more at walkingwithpurpose.com

Join us Wed. 8/31 in the SPN gym for a WWP get together after the 6:30PM mass



"WWP allows me to grow as a daughter of Christ... versus as a mother, wife, etc."

"This is my third year doing WWP and each year the weekly lessons seem to be written specifically for me and what I am currently going through. WWP allows me to grow as a daughter of Christ and as a person in my own right. (versus as a mother, wife, etc.)"

- Participant at Our Lady of the Fields Catholic Church in Millersville, MD



SEPTEMBER FOOD PANTRY WISHLIST



Our next monthly food distribution will be on Thursday, September 22nd. We have a **critical shortage** of the following items...

Spaghetti Sauce
Spaghetti Noodles
Baked Beans

Please do not send peanut butter, macaroni and cheese, canned/dry beans or canned vegetables at this time. We still have an abundance of these items and do not have room to store any more.

Did you know that most of our households have fewer than three members and are exclusively made up of older/disabled adults? Whenever possible...please avoid choosing items that are specifically marketed for children or jumbo-sized items. Thank you always for your generous donations.

St. Clement & St. Philip Neri YOUTH MINISTRY KICKOFF!

Young Adults, High School, and Middle School

September 11, 2022

5:00 pm – 8:00 pm

Youth Mass
Dinner
Stand-up Comedy
Color Wars
Bonfire S'mores
&
Games Galore

Just show up and join the fun
with food, faith, & fellowship!

For more information, please reach out to our Youth Leaders:
Catherine at cattirsch2012@gmail.com (Young Adults)
Hilary at hfbateman@gmail.com (High School)
Matteo at Matteo.Santi-Amantini@archbalt.org (High School)
Laura at lauraproper@icloud.com (Middle School)
Henrik at hstruck21@gmail.com (Middle School)



SPN MOM'S GROUP PRESENTS...

Stroller Rosary Walks



STARTING TUESDAY, SEPTEMBER 6TH @9AM

BRING YOUR KID[S], STROLLER, AND A ROSARY FOR A WALK WITH MARY, ENDING WITH A PLAYDATE AT THE PLAYGROUND!
ALL FAMILIES OF ALL SIZES AND AGES ARE WELCOME

FIRST AND THIRD TUESDAYS AT 9AM
SECOND AND FOURTH SATURDAYS AT 9AM

Sawmill Creek Park
7405 Charley Eckman Ln
Glen Burnie, MD 21061
Please RSVP to sign up for email reminders/rain cancellations of Rosary Walks.
Elizabeth Dalasio at eadalasio@gmail.com

St. Philip Neri Parish Outreach Ministry - always looking for volunteers!
Contact Donna Scott at dscott@spnmd.org to find out ways you can help this ministry!



Do you like to sing? Do you like the songs we sing at Mass on Sundays? Come join us and share the gift of your voice with all of the St. Philip Neri community.

The St. Philip Neri Children's Choir will begin their rehearsals on Thursday, September 29, 2022 from 6:15 PM to 6:45 PM. All children kindergarten and up are welcome. The children will sing the 3rd Sunday of every month at the 9:30 AM Mass, some Masses for Christmas season, and Christmas Eve. If you know of anyone else that would be interested, please let them know so they can come or bring them along with you when you come to rehearsal.

If you have any questions, please contact Karen Strecker at 410-761-1427/410-615-3564 or via email at choirkarensn@yahoo.com or Kathy Norris at khnorris2018@outlook.com.




IT'S NOT TOO LATE GIRL SCOUTS



REGISTRATION CONTINUES

Troops continue to welcome girls from Kindergarten to Eighth grade. Weekly meetings will be held on Monday evenings beginning September 12, 2022 in the school from 6:00-7:15PM.

There are troops for:

- Daisy Girl** Scouts for girls in Kindergarten and First Grade
- Brownie** Girl Scouts for girls in Second and Third Grade
- Junior** Girl Scouts for girls in Fourth and Fifth Grade
- Cadette** Girl Scouts for girls in Sixth, Seventh and Eighth Grade

Adults are encouraged to register and participate with their daughters in the troop meetings, at cookie booths, on field trips and in events with other troops.

Contact Maryann Kulesz, SPN GS Coordinator, at rakak@aol.com for further registration information.



RCIA is a program intended to prepare men and women for entrance into the Catholic Church through instruction in Catholic teaching and practice.

If you are interested in entering the Catholic Church or just enriching your understanding of the Faith, then RCIA is for you.

Classes begin on **Wednesday, September 14, 2022**

When: RCIA meets on Wednesday evenings from 7:15pm – 9:00pm

Where: Classes meet in the St. John Room

To Register: Call the Parish Office 410-859-0571 or email tfeeney@spsnmd.org



Join us at the Linthicum Fair!

33RD LINTHICUM COMMUNITY FAIR

Saturday, September 24, 2022

Parade: 9am (starting at
Lindale Middle)

Fair: 10-3

St. John Lutheran Church Field

**Food, Fun,
Fellowship, Games,
Crafts, Rides,
Entertainment**



Proceeds from Fair benefit
HOPE for All & NCEON
Collecting non-perishable food items
the day of the Fair

For everyone's enjoyment, please
leave your furry friends at home

*Let peace grow,
from 21☺9!*

Contact Information: linthicumfair@gmail.com or call 410-456-3019

Show your school spirit! Walk with SPN in the Linthicum Parade

When: Saturday, September 24, 2022

Where: Lindale Middle School

415 Andover Rd, Linthicum MD 21090

Time: 8 am – Parade will start at 9 am
We have been asked to arrive early!

Wear: Your 2022 SPN Spirit shirt or
any SPN spirit shirt

The Linthicum Community Fair is from 10 AM to 3 PM on
St. John's Lutheran field at the corner of Maple Road and Hammonds Ferry Road.
**We would love to get a picture of everyone on the steps of Lindale Middle School before
the parade starts. Bring your best smiles! Hope to see you there!**



We will be collecting canned goods to support the
NCEON (North County Emergency Outreach Network)
food pantry. Please bring in your canned good
donations the week of September 19-23.
Place it in the box in the school lobby.
Let's fill the NCEON truck!

A shuttle bus will be provided for parade participants. Please park at Lindale Middle School. When you are ready
to head home, jump on the shuttle bus at the gate at St. John's field and they will take you back to your vehicle!
Shuttle bus will operate from 10 AM to 3 PM.



Ms. Theresa and Ms. Nancy are saying "Welcome Back" to all of our students!

Victoria and Jimmy are gearing up for a year running the sound board at church!



Mr. Lathroum added a few more instruments to the wall in the music room.

Let's play the ukulele!



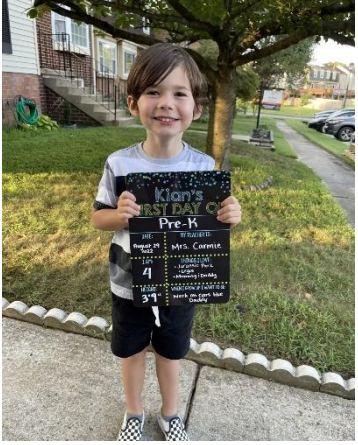
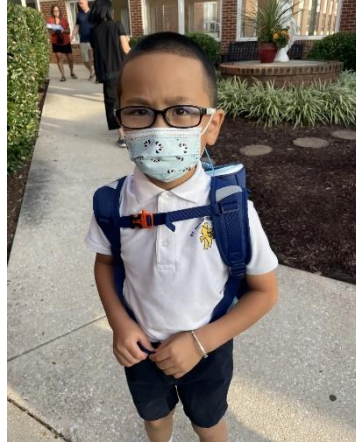
Looks like it was a "Thumbs Up" for the first week of school!





More
first day
pictures!







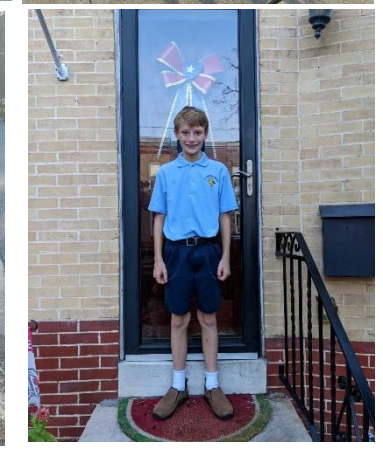
August 29, 2022

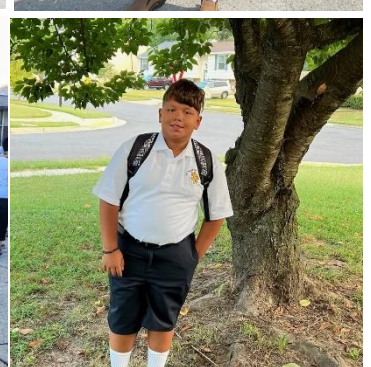




Love seeing these smiling faces!









Hosted by
St. Philip Neri School

Friday,
September 23, 2022

It's your chance to win Kate Spade, COACH, Michael Kors, Vera Bradley, and other purses!

20 Games
of Bingo

3 Specials,
2 Raffles,
and a cash
50/50

Great food will be
available to
purchase!



Doors open
at 6 PM.

Bingo starts
at 7 PM.

St. Philip Neri
Msgr. Zorbach Hall
6405 S. Orchard Rd.
Linthicum, MD
21090

Due to space restrictions seating will be limited. Purchase your spot now!

Order online at: <https://forms.diamondmindinc.com/stphilipneri/bingo>

If you have a group, please indicate who you would like to sit with at this event.



RAFFLE 1 - Vera Bradley -
Lighten Up Wheeled Cart with
matching fleece travel blanket

COST IS \$20!

This cost is for the 20-game bingo packet.
Does not include the specials, raffles or 50/50.
No physical tickets will be delivered.
Your name will be placed on the players list.

**CAN'T MAKE THE
EVENT?**

You can still participate in the
RAFFLES and the 50/50.

Email Sue Wenzlick with any questions
at swenzlick@spnmd.org.



RAFFLE 2 - Michael Kors -
Cooper Shopper Tote in black

SPN ANNUAL FUND PURSE BINGO

Friday, September 23, 2022

Name: _____
 Phone: _____
 Address: _____
 Email: _____

NUMBER		COST
_____	Number of Entries for the 20-game prizes (cost is \$20 each) <i>Mix of different Purses</i>	_____
_____	Number of Entries for all THREE SPECIALS (cost is \$5 each) <i>Kate Spade New York Minnie Mouse</i> <i>Michael Kors Gilly Large Travel Tote</i> <i>Vera Bradley Grand Traveler Bag</i>	_____
_____	Number of Entries for Raffle #1 (cost is \$5 each) <i>Vera Bradley Lighten Up Wheeled Cart and Fleece Travel Blanket</i>	_____
_____	Number of Entries for Raffle #2 (cost is \$5 each) <i>Michael Kors Cooper Shopper Tote</i>	_____
_____	Number of Entries for the CASH 50/50 (cost is \$5 each)	_____
TOTAL COST		_____

Order online at <https://forms.diamondmindinc.com/stphilipneri/bingo>



Raffle 1
Vera Bradley
Lighten Up Wheeled Cart



Raffle 2
Michael Kors
Cooper Shopper Tote

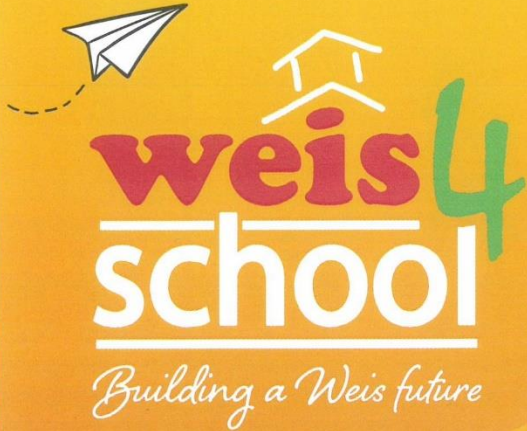
Not wanting to submit online?

Then please submit this form and
check payable to
"St. Philip Neri School"
to:

St. Philip Neri School
Attn: Annual Fund Purse Bingo
6401 S. Orchard Road
Linthicum, MD 21090

**ORDERS MUST BE INTO SCHOOL
OFFICE BY WEDNESDAY,
SEPTEMBER 21**

**ALL TICKETS MUST BE PRE-
PURCHASED!**



Your
School's
Code



Help your school earn a share of

\$500,000

Dear Parents,

Educational technology and funding changes daily. To keep up with these changes and expenses, our school is partnering with Weis Markets in their annual Weis 4 School program. By participating in this program, we can earn money for our school by simply shopping. When you shop at Weis, scan the bar code above to register your Weis Rewards card or register online at weis4school.com. Once you register, you're in the program and you do not need to register again this school year. Please share this bar code with your friends and family. The more interest and enthusiasm we generate, the greater the benefits to our school.

Thank you for your support.

weis4school.com

